



WOODLANDS ROAD, MIDDLESEX, HA1  
£625,000 FREEHOLD

## FAMILY HOME FOR SALE

Tenure: Freehold  
Council Tax Band: E (London Borough of Harrow)  
EPC Rating: D

Harrow | 020 8861 3933 | harrow@winkworth.co.uk

**Winkworth**

for every step...

*winkworth.co.uk*





#### DESCRIPTION:

Woodlands Road is a charming Semi-detached house that exudes a warm and inviting ambiance. Upon entering, you will appreciate the bright and airy atmosphere, providing a welcoming feel throughout.

The well-proportioned rooms offer ample space for both relaxation and entertainment. The kitchen is thoughtfully designed, featuring modern appliances and plenty of storage options.

This delightful property boasts three generously-sized bedrooms, two reception rooms, and a well-appointed bathroom. There is comfortable driveway which can accommodate up to two cars.

Woodlands Road is conveniently located in close proximity to Central Harrow's vast array of shopping and dining amenities, with Tesco Superstore and various restaurants just a short walk away.

Woodlands Road is equidistant to both Harrow-on-the-Hill and Harrow and Wealdstone Underground Stations and offers seamless travel to Central London via the Metropolitan, Bakerloo and National Rail Services.

Woodlands Road also falls within catchment for some of Harrow's leading schools such as, Harrow High School, St Jerome's Bilingual School and Norbury School to name a few.



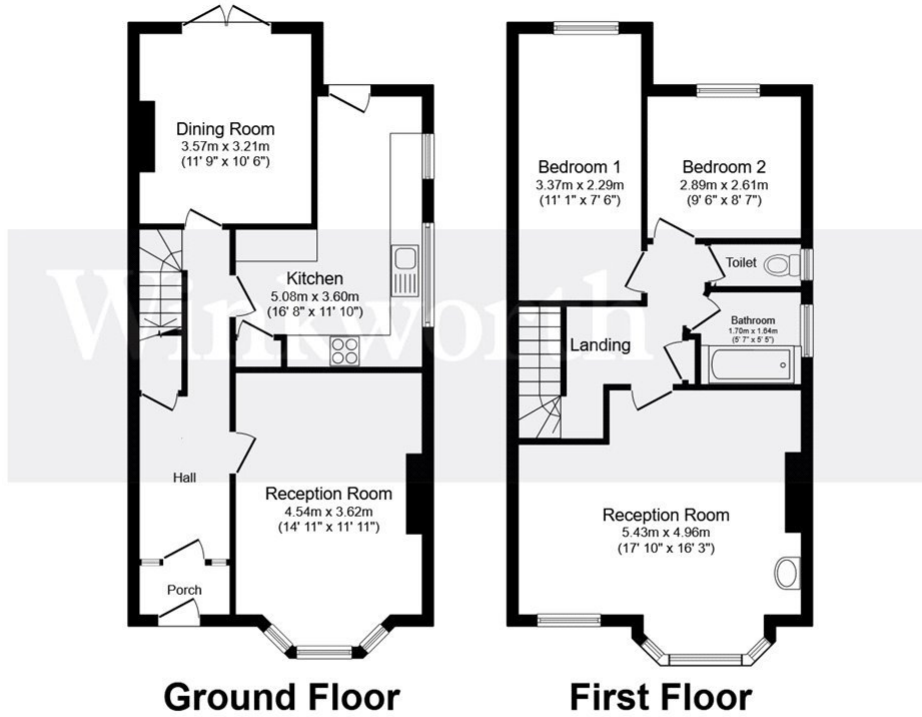




Winkworth



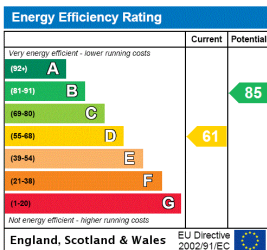
Winkworth



Total floor area 112.2 m<sup>2</sup> (1,207 sq.ft.) approx

This floor plan is for illustrative purposes only. It is not drawn to scale. Any measurements, floor areas (including any total floor area), openings and orientation are approximate. No details are guaranteed, they cannot be relied upon for any purpose and they do not form part of any agreement. No liability is taken for any error, omission or misstatement. A party must rely upon its own inspection(s). Powered by [www.focalagent.com](http://www.focalagent.com)

This floorplan is for illustration purposes only and is not to scale. The position and size of doors, windows, appliances and other features are approximate.



Harrow | 020 8861 3933 | [harrow@winkworth.co.uk](mailto:harrow@winkworth.co.uk)

for every step...

[winkworth.co.uk](http://winkworth.co.uk)

Winkworth wishes to inform prospective buyers and tenants that these particulars are a guide and act as information only. All our details are given in good faith and believed to be correct at the time of printing but they don't form part of an offer or contract. No Winkworth employee has authority to make or give any representation or warranty in relation to this property. All fixtures and fittings, whether fitted or not are deemed removable by the vendor unless stated otherwise and room sizes are measured between internal wall surfaces, including furnishings.