



## 60 WESTGATE PARK, SLEAFORD, NG34 7QP

### **£150,000 LEASEHOLD**

Welcome to this charming Over 50's Two Bedroom park home conveniently located close to Sleaford town centre. This well-designed property offers a comfortable and spacious living environment, perfect for those seeking a peaceful and convenient lifestyle. The property features Two spacious double Bedrooms, a large Kitchen with ample worktop space and storage, Lounge and a Shower Room. This park home is situated in a desirable location, close to Sleaford town centre, offering easy access to a range of amenities, including shops, restaurants, and leisure facilities.

Management fees apply, speak to the agent for more details.

Sleaford | 01529 303 377 | [sleaford@winkworth.co.uk](mailto:sleaford@winkworth.co.uk)

**Winkworth**

for every step...

[winkworth.co.uk](http://winkworth.co.uk)

## ACCOMMODATION

### Entrance Hall

**Living Room** - 19'2" x 11'9" (5.84m x 3.58m)

**Kitchen** - 12'7" x 9'1" (3.84m x 2.77m)

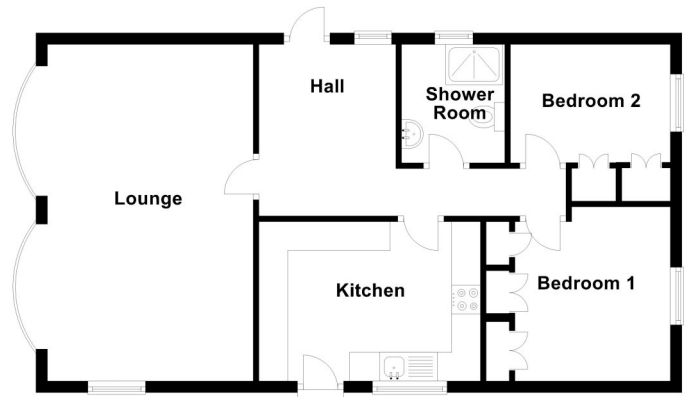
**Bedroom One** - 10'6" x 9'11" (3.2m x 3.02m)

**Bedroom Two** - 9'1" x 8'11" (2.77m x 2.72m)

**Shower Room** - 6'9" x 5'11" (2.06m x 1.8m)

- RECENTLY MODERNISED
- TWO DOUBLE BEDROOMS
- MODERN FITTED SHOWER ROOM
- EXTREMELY LIGHT LOUNGE WITH 2 BOW WINDOWS
- SPACIOUS KITCHEN
- CONVENIENTLY POSITIONED
- DRIVEWAY
- CLOSE TO TOWN CENTRE

Ground Floor



Sleaford | 01529 303 377 | [sleaford@winkworth.co.uk](mailto:sleaford@winkworth.co.uk)

**Winkworth**

for every step...

[winkworth.co.uk](http://winkworth.co.uk)

Winkworth wishes to inform prospective buyers and tenants that these particulars are a guide and act as information only. All our details are given in good faith and believed to be correct at the time of printing but they don't form part of an offer or contract. No Winkworth employee has authority to make or give any representation or warranty in relation to this property. All fixtures and fittings, whether fitted or not are deemed removable by the vendor unless stated otherwise and room sizes are measured between internal wall surfaces, including furnishings.