



**THE WILLOWS, READING, BERKSHIRE, RG4 8BD
£1,250 PER MONTH UNFURNISHED**

**TWO BEDROOM FIRST FLOOR MAISONETTE
LOCATED IN CAVERSHAM. AVAILABLE 10TH
AUGUST.**

Reading | 0118 4022 300 | reading@winkworth.co.uk

Winkworth

for every step...

winkworth.co.uk

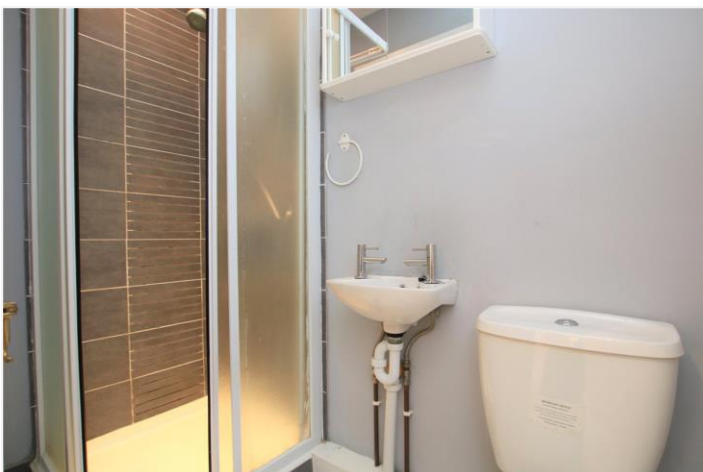


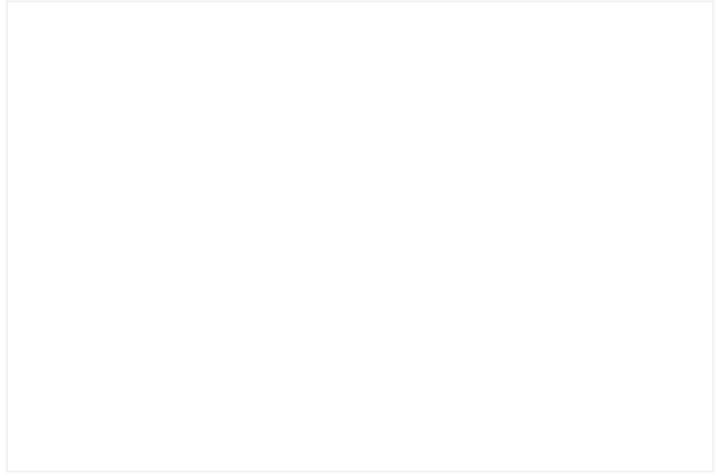
DESCRIPTION:

Two bedroom first floor maisonette located in the sought after area of Caversham, close to Reading town centre. The property comprises spacious living room, separate kitchen, two double bedrooms, end suite shower room and study to the master bedroom and a further three piece bathroom. The property benefits from a driveway for off road parking. Available 10th August 2024. Unfurnished.

AT A GLANCE

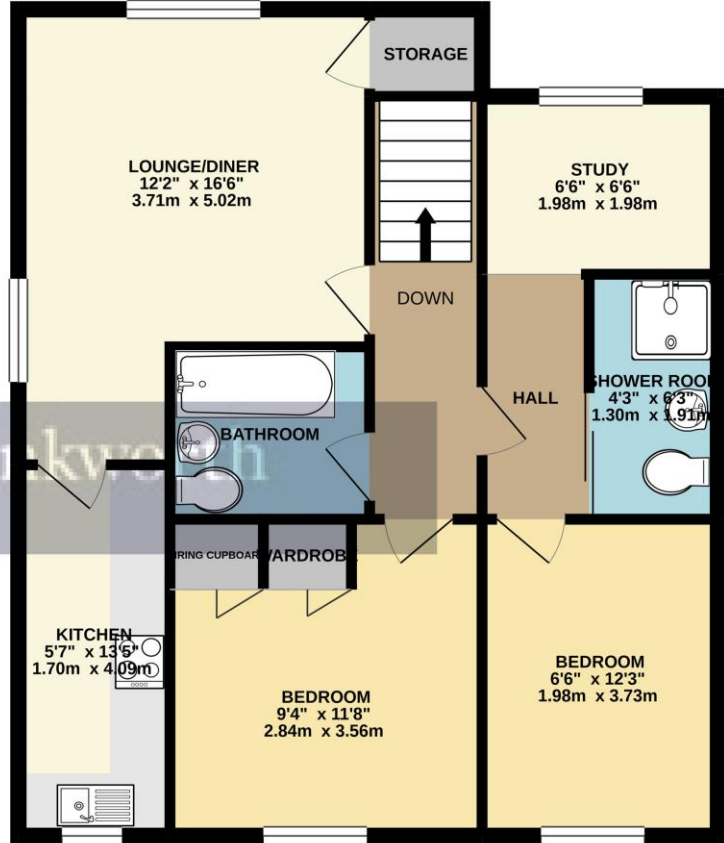
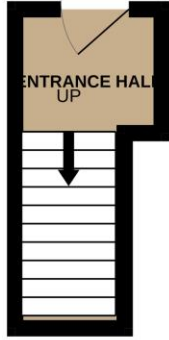
- Two bedroom maisonette
- Two bathrooms
- First floor
- Off road parking for one car
- Council tax band B
- Available 10th August
- Unfurnished





GROUND FLOOR
52 sq.ft. (4.8 sq.m.) approx.

FIRST FLOOR
729 sq.ft. (67.7 sq.m.) approx.



TOTAL FLOOR AREA : 781 sq.ft. (72.6 sq.m.) approx.

Whilst every attempt has been made to ensure the accuracy of the floorplan contained here, measurements of doors, windows, rooms and any other items are approximate and no responsibility is taken for any error, omission or mis-statement. This plan is for illustrative purposes only and should be used as such by any prospective purchaser. The services, systems and appliances shown have not been tested and no guarantee as to their operability or efficiency can be given.
Made with Metropix ©2021

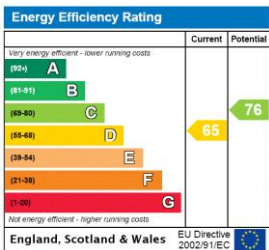
This floorplan is for illustration purposes only and is not to scale. The position and size of doors, windows, appliances and other features are approximate.

Deposit: £1,442.31

Holding Deposit: £288.46

Council Tax Band: B

Where no figures are shown, we have been unable to ascertain the information. All figures that are shown were correct at the time of printing.



Reading | 0118 4022 300 | reading@winkworth.co.uk



for every step...

winkworth.co.uk

Winkworth wishes to inform prospective buyers and tenants that these particulars are a guide and act as information only. All our details are given in good faith and believed to be correct at the time of printing but they don't form part of an offer or contract. No Winkworth employee has authority to make or give any representation or warranty in relation to this property. All fixtures and fittings, whether fitted or not are deemed removable by the vendor unless stated otherwise and room sizes are measured between internal wall surfaces, including furnishings.