



IVY ROAD, CRICKLEWOOD, LONDON, NW2  
**£1,950 PER MONTH PART FURNISHED**

**A BRIGHT AND SPACIOUS TWO DOUBLE BEDROOM  
APARTMENT ARRANGED OVER THE FIRST FLOOR OF  
AN ATTRACTIVE PERIOD BUILDING.**

Kensal Rise & Queens Park | 0208 960 4947 | [kensalrise@winkworth.co.uk](mailto:kensalrise@winkworth.co.uk)

**Winkworth**

for every step...

[winkworth.co.uk](http://winkworth.co.uk)

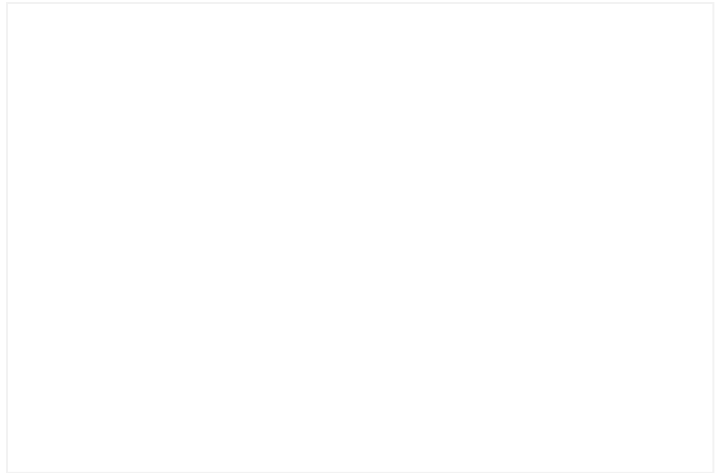
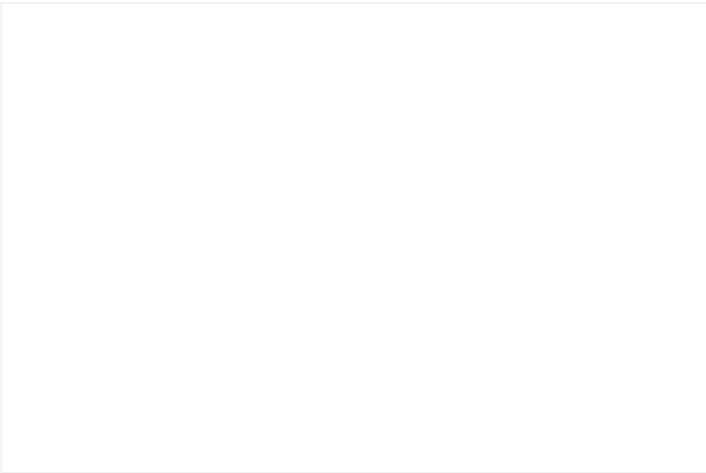


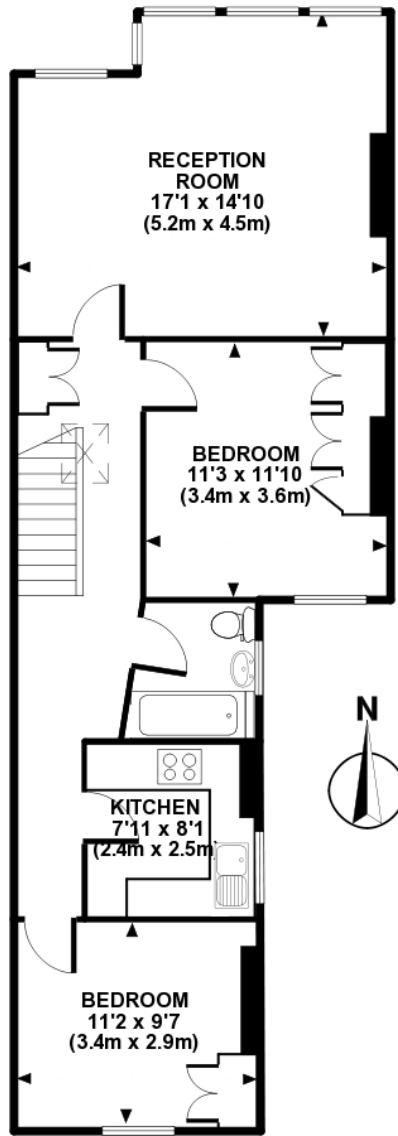
**DESCRIPTION:**

This lovely two double bedroom first floor apartment is offered to the market furnished and is situated perfectly to take advantage of Gladstone Parks green spaces and the amenities of Willesden Green.

The property is over 700 sq. ft. and benefits from a large reception room with hard wood flooring and feature fireplace, two good size double bedrooms with built in storage, a newly fitted modern kitchen and three piece fully tiled bathroom.







FIRST FLOOR

APPROX GROSS INTERNAL FLOOR AREA: 712 sq. ft / 66 sq. m

FOR IDENTIFICATION PURPOSES ONLY - NOT TO SCALE  
[www.winkworth.co.uk](http://www.winkworth.co.uk)

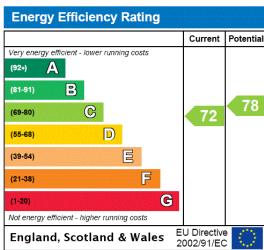
This floorplan is for illustration purposes only and is not to scale. The position and size of doors, windows, appliances and other features are approximate.

**Deposit:** 5 weeks rent

**Holding Deposit:** 1 weeks rent

**Council Tax Band:** C

Where no figures are shown, we have been unable to ascertain the information. All figures that are shown were correct at the time of printing.



Kensal Rise & Queens Park | 0208 960 4947 | [kensalrise@winkworth.co.uk](mailto:kensalrise@winkworth.co.uk)



for every step...

[winkworth.co.uk](http://winkworth.co.uk)

Winkworth wishes to inform prospective buyers and tenants that these particulars are a guide and act as information only. All our details are given in good faith and believed to be correct at the time of printing but they don't form part of an offer or contract. No Winkworth employee has authority to make or give any representation or warranty in relation to this property. All fixtures and fittings, whether fitted or not are deemed removable by the vendor unless stated otherwise and room sizes are measured between internal wall surfaces, including furnishings.