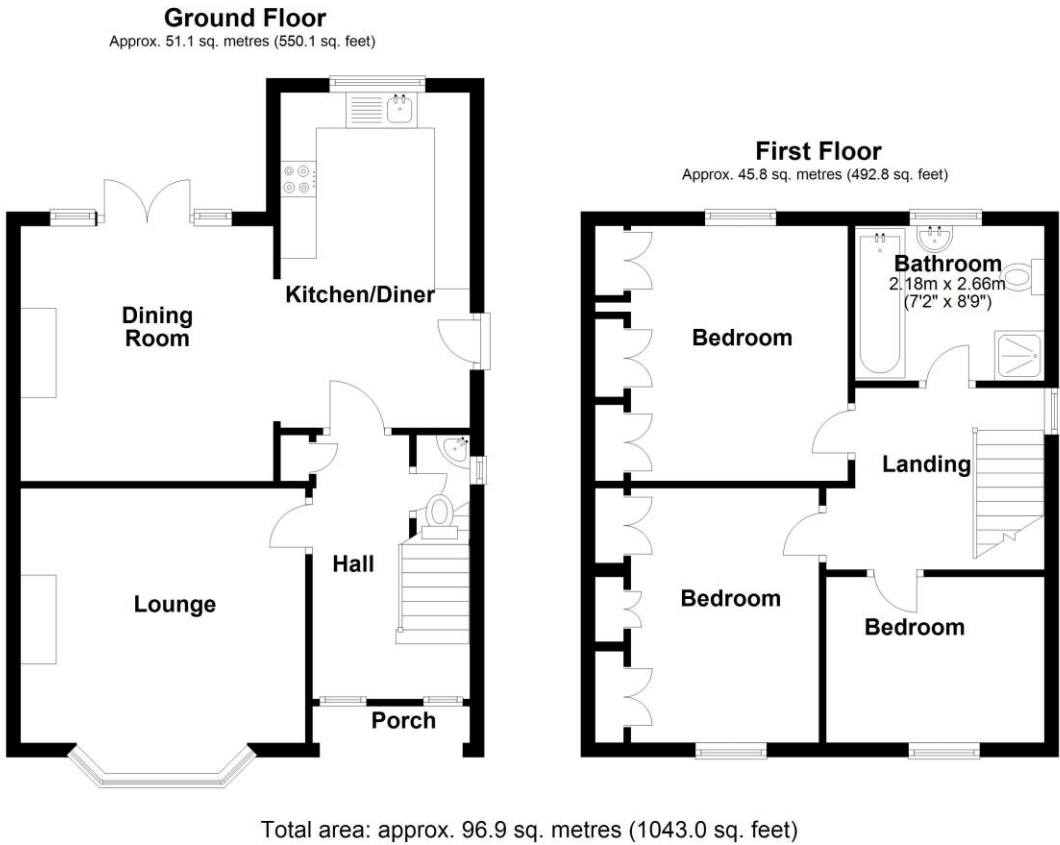


North Parade, Sleaford, Lincolnshire

This floorplan is for illustration purposes only and is not to scale. The position and size of doors, windows, appliances and other features are approximate.

Score	Energy rating	Current	Potential
92+	A		
81-91	B		83 B
69-80	C		
55-68	D	56 D	
39-54	E		
21-38	F		
1-20	G		



106 North Parade, Sleaford, Lincolnshire, NG34 8AW

£230,000 Freehold

**\*\*NO CHAIN\*\*** We are pleased to offer for sale this Three Bedroom Semi-Detached Home which has been tastefully updated and modernised by the current vendor.



See things differently.



See things differently.

Winkworth Sleaford | 01529 303377 | [sleaford@winkworth.co.uk](mailto:sleaford@winkworth.co.uk)

[winkworth.co.uk/sleaford](http://winkworth.co.uk/sleaford)

Under the Property Misdescriptions Act 1991 these particulars are a guide and act as information only. All details are given in good faith and are believed to be correct at time of printing. Winkworth give no representation as to their accuracy and potential purchasers or tenants must satisfy themselves or otherwise as to their correctness. No employee of Winkworth has authority to make or give any representation or warranty in relation to this property.

Three Bedroom Semi-Detached Home | Popular Residential Area of Sleaford | South Facing Garden | Tastefully Modernised by Current Owner | Three Generous Sized Bedrooms | Off Street Parking | Huge Rear Garden | Viewing Essential



DESCRIPTION

The property is well maintained and benefits from off street parking, a modern fitted Kitchen and a Downstairs Cloakroom.

The accommodation comprises of Entrance Hall, Lounge, Kitchen, Family/Dining Room, Downstairs Cloakroom, Three Bedrooms and a Family Bathroom.

The current vendor has improved the house throughout, and the property boasts a huge enclosed SOUTH FACING rear garden with ample parking to the rear and also a generous storage area.

Come and have a look!

ACCOMMODATION

Porch

Entrance Hall - 12'2" x 8'9" (3.7m x 2.67m)

Lounge - 11'9" x 13'1" (3.58m x 4m)

Dining Room - 11'9" x 11'8" (3.58m x 3.56m)

Kitchen/Diner - 15'6" x 8'9" (4.72m x 2.67m)

Landing

Bedroom One - 11'9" x 11'8" (3.58m x 3.56m)

Bedroom Two - 11'9" x 10'4" (3.58m x 3.15m)

Bedroom Three - 10'1" x 7'8" (3.07m x 2.34m)

Family Bathroom



LOCAL AUTHORITY

North Kesteven District Council

TENURE

Freehold

COUNCIL TAX BAND

B