



THRALE ROAD, SW16  
£600,000 SHARE OF FREEHOLD

## A CHARMING TWO DOUBLE BEDROOM APARTMENT FOR SALE IN THRALE ROAD.

Tooting | 020 8767 5221 | [tooting@winkworth.co.uk](mailto:tooting@winkworth.co.uk)

**Winkworth**

for every step...

[winkworth.co.uk](http://winkworth.co.uk)





## DESCRIPTION:

A wonderful opportunity to purchase a well presented two double bedroom apartment occupying the second and top floor of this charming Victorian building.

The property maintains its original character with a large front reception room which is furnished with a feature fireplace and high ceilings as well as a large double bedroom, an eat-in kitchen a family bathroom. The top floor offers a very bright and spacious double bedroom and living area with great and unbroken views of Furzedown through a large French door with an en-suite bathroom.

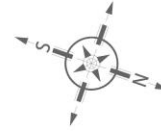
Thrale Road is nestled away in the highly desirable Furzedown Village with the vast amenities, close knit community and shops and bars the area has to offer and with Tooting Bec Common a short walk away. Excellent transport links can be found via Tooting Bec or Tooting Broadway Underground and Streatham Overground stations.



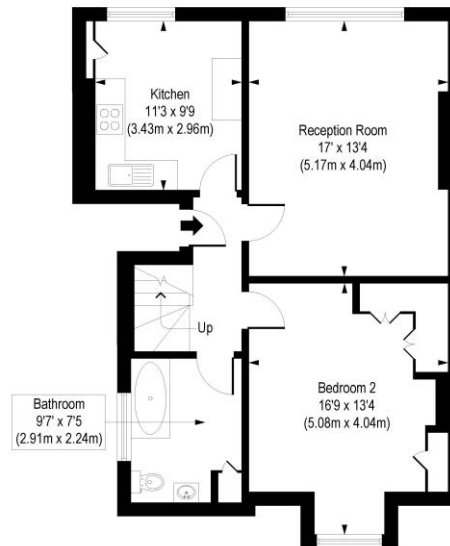


# Thrale Road, SW16

Approx. Gross Internal Floor Area 1243 sq. ft / 115.46 sq. m (Including Eaves)  
 Approx. Gross Internal Floor Area 1176 sq. ft / 109.23 sq. m (Excluding Eaves)



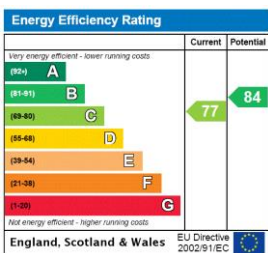
Third Floor  
 Gross Internal  
 Floor Area 557 sq ft



Second Floor  
 Gross Internal  
 Floor Area 686 sq ft

COMPLIANT WITH RICS CODE OF MEASURING PRACTICE. Floorplan is for illustrative purposes only and is not to scale. Every attempt has been made to ensure the accuracy of the floorplan shown, however all measurements, fixtures, fittings and data shown are an approximate interpretation for illustrative purposes only. Liability for errors, omissions or mis-statement through negligence or otherwise is hereby excluded.

This floorplan is for illustration purposes only and is not to scale. The position and size of doors, windows, appliances and other features are approximate.



Tooting | 020 8767 5221 | tooting@winkworth.co.uk



for every step...

winkworth.co.uk

Winkworth wishes to inform prospective buyers and tenants that these particulars are a guide and act as information only. All our details are given in good faith and believed to be correct at the time of printing but they don't form part of an offer or contract. No Winkworth employee has authority to make or give any representation or warranty in relation to this property. All fixtures and fittings, whether fitted or not are deemed removable by the vendor unless stated otherwise and room sizes are measured between internal wall surfaces, including furnishings.