



Oaklands Grove, W12

£650,000 Leasehold

A fabulous two bedroom first floor Edwardian maisonette with scope to extend and private garden.

Reception Room | Kitchen | Dining Room | 2 Bedrooms | Bathroom | 805 Sq Ft / 75 Sq M | Council Tax Band D | EPC Rating Band tbc

Winkworth



LOCATION

Oaklands Grove forms part of the ever popular 'Groves' area of Shepherd's Bush. Within easy reach of the area's diverse array of shops and restaurants, there are also several pubs and coffee shops close by. The outside spaces of both Wormholt and Ravenscourt Parks are just a short distance away, whilst superb transport links give easy access both in to and out of Central London.

DESCRIPTION

Well presented throughout, the property is entered on the ground floor through its own private entrance, with stairs leading to the first floor which comprises entrance hall, reception room, two bedrooms, bathroom, dining room and kitchen. The flat further benefits from a private garden and the loft space demised, giving scope to extend, subject to the usual necessary consents being obtained.

Lease:- 125 years from 29 September 2003 (103 years remaining)

Service charge - £250 per annum

Ground rent - £10 per annum

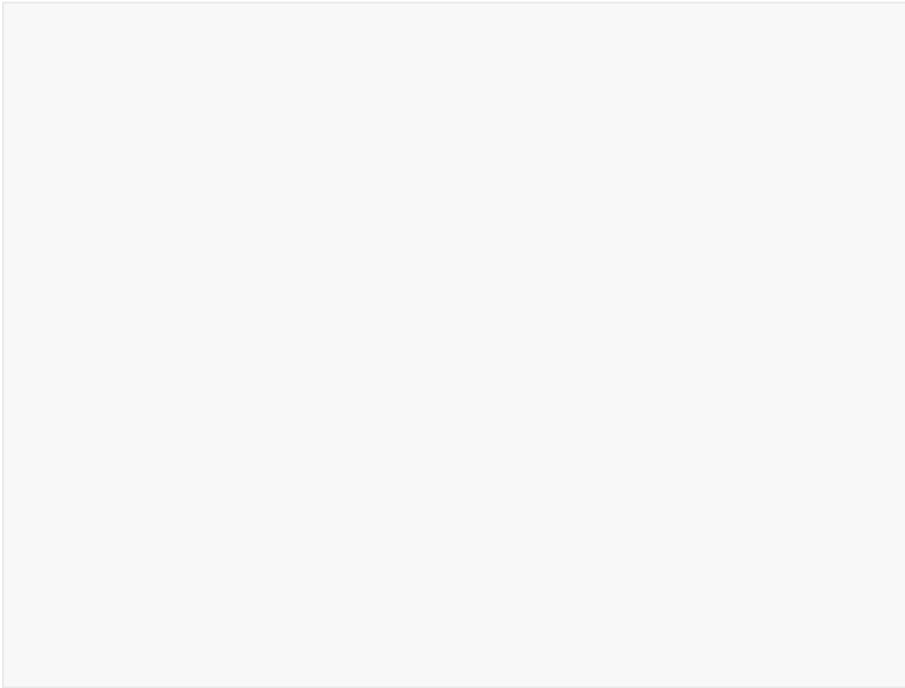


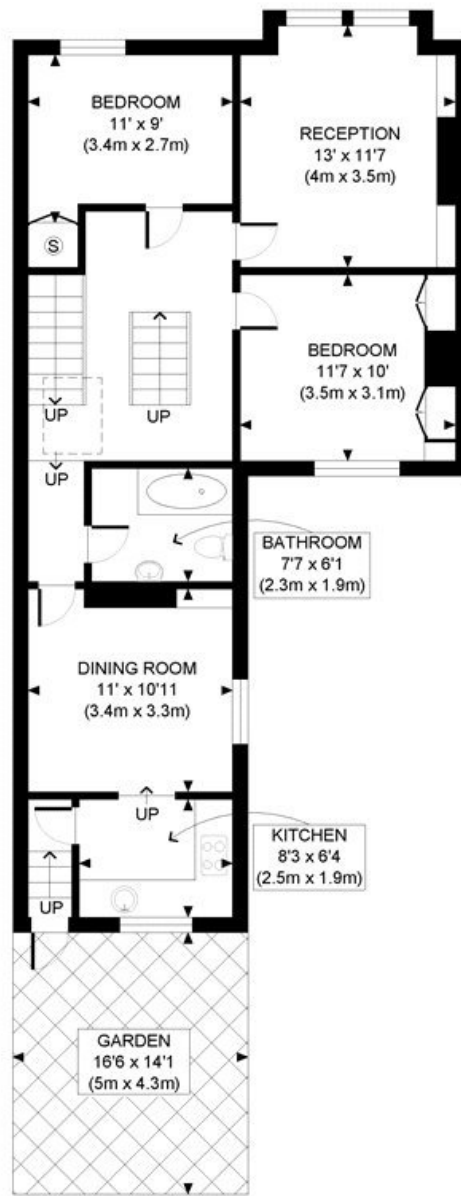
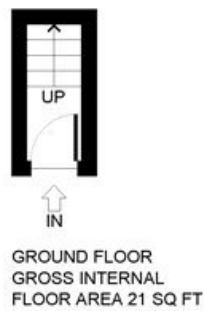


LOCAL AUTHORITY
Hammersmith & Fulham

TENURE
Leasehold 103 years 8 months.

PRICE: £650,000 Leasehold





FIRST FLOOR
GROSS INTERNAL
FLOOR AREA 784 SQ FT



APPROX. GROSS INTERNAL FLOOR AREA: 805 SQ FT/ 75 SQM



This plan is for illustrative purposes only and should be used as such by any prospective client. Whilst every attempt has been made to ensure the accuracy of the Floor Plan contained here, measurements of the doors, windows, rooms and any other items are approximate and no responsibility is taken for any errors, omissions, or misstatement. The services, systems and appliances shown have not been tested and no guarantee as to the operability or efficiency can be given.

PROPERTY PHOTO PLANS
AN ISO 9001:2015 REGISTERED BUSINESS

The displayed square footage is taken from the floor plans with measurements created using the Royal Institute of Chartered Surveyors' Code of Practice for Measuring. These measurements are approximate and included for illustrative purposes only. Winkworth does not make any representation as to the accuracy of these measurements and you should seek to verify them for yourself. Winkworth accept no liability for any loss you may suffer if you rely on these measurements.

Shepherds Bush | 020 8735 3266 | shepherdsbush@winkworth.co.uk



for every step...

Under the Property Misdescriptions Act 1991, these Particulars are a guide and act as information only. All details are given in good faith and are believed to be correct at time of printing. Winkworth give no representation as to their accuracy and potential purchasers or tenants must satisfy themselves by inspection or otherwise as to their correctness. No employee of Winkworth has authority to make or give any representation or warranty in relation to this property.