



TONBRIDGE CRESCENT, HARROW, MIDDLESEX, HA3
OFFERS IN EXCESS £650,000 FREEHOLD
**CHARMING THREE BEDROOM
END OF TERRACE HOME**

Kingsbury | 020 8204 0000 | kingsbury@winkworth.co.uk



for every step...

winkworth.co.uk



Nestled on a charming residential road, moments from the vibrant heart of Queensbury, this delightful end of terrace home offers an ideal blend of comfort, style, and potential. The ground floor boasts a spacious double living and dining room, seamlessly connected to a stylish, modern kitchen, perfect for both family gatherings and entertaining. A convenient downstairs shower room adds practicality to the well-thought-out layout. Upstairs, you'll find two generously sized double bedrooms, a cozy single bedroom, and a well-appointed family bathroom. Externally, the property offers a beautifully maintained, expansive garden with side gate access, a garage, and off-street parking for added convenience. With scope to extend (STPP). An internal viewing is recommended to fully appreciate all this home has to offer.



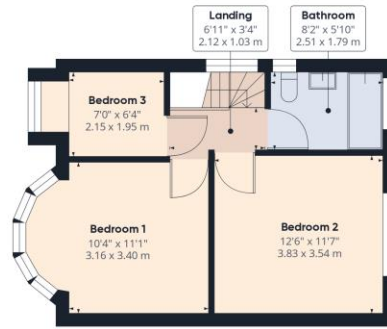
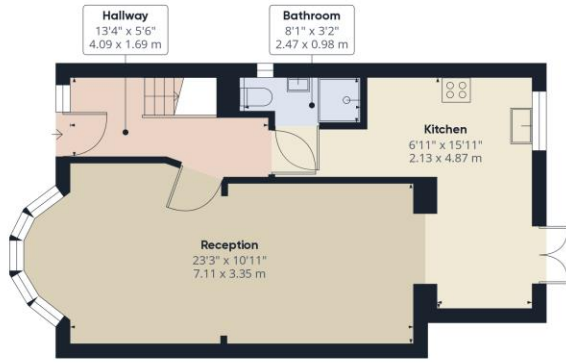
Winkworth

for every step...



Winkworth

for every step...



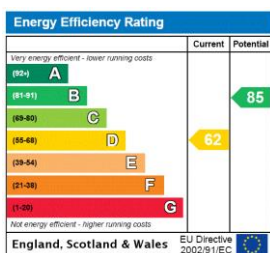
Approximate total area⁽¹⁾
 1344.94 ft²
 124.95 m²

(1) Excluding balconies and terraces

While every attempt has been made to ensure accuracy, all measurements are approximate, not to scale. This floor plan is for illustrative purposes only.
 Calculations are based on RICS IPMS 3C standard.

GIRAFFE 360

This floorplan is for illustration purposes only and is not to scale. The position and size of doors, windows, appliances and other features are approximate.



Tenure: Freehold

Council Tax Band: D – Harrow

Where no figures are shown, we have been unable to ascertain the information. All figures that are shown were correct at the time of printing.

Kingsbury | 020 8204 0000 | kingsbury@winkworth.co.uk

Winkworth

for every step...

winkworth.co.uk

Winkworth wishes to inform prospective buyers and tenants that these particulars are a guide and act as information only. All our details are given in good faith and believed to be correct at the time of printing but they don't form part of an offer or contract. No Winkworth employee has authority to make or give any representation or warranty in relation to this property. All fixtures and fittings, whether fitted or not are deemed removable by the vendor unless stated otherwise and room sizes are measured between internal wall surfaces, including furnishings.