



QUEENS WHARF, READING, BERKSHIRE, RG1 4QE
£1,600 PER MONTH UNFURNISHED

A LARGE TWO BEDROOM GROUND FLOOR APARTMENT OVERLOOKING THE RIVER KENNET IN READING TOWN CENTRE

Reading | 0118 4022 300 | reading@winkworth.co.uk

Winkworth

for every step...

winkworth.co.uk



DESCRIPTION:

A spacious ground floor two bedroom apartment located in the heart of Reading town centre in the desirable Queens Wharf development overlooking the River Kennet. Offering excellent access to Reading train station this spacious Conran designed apartment comprises; an open plan living room/kitchen, two double bedrooms, the master with an en suite shower room, a further bathroom and ample storage. The property further benefits from a private patio to the front and secure gated off road parking space. Available 28th February 2025. Unfurnished.

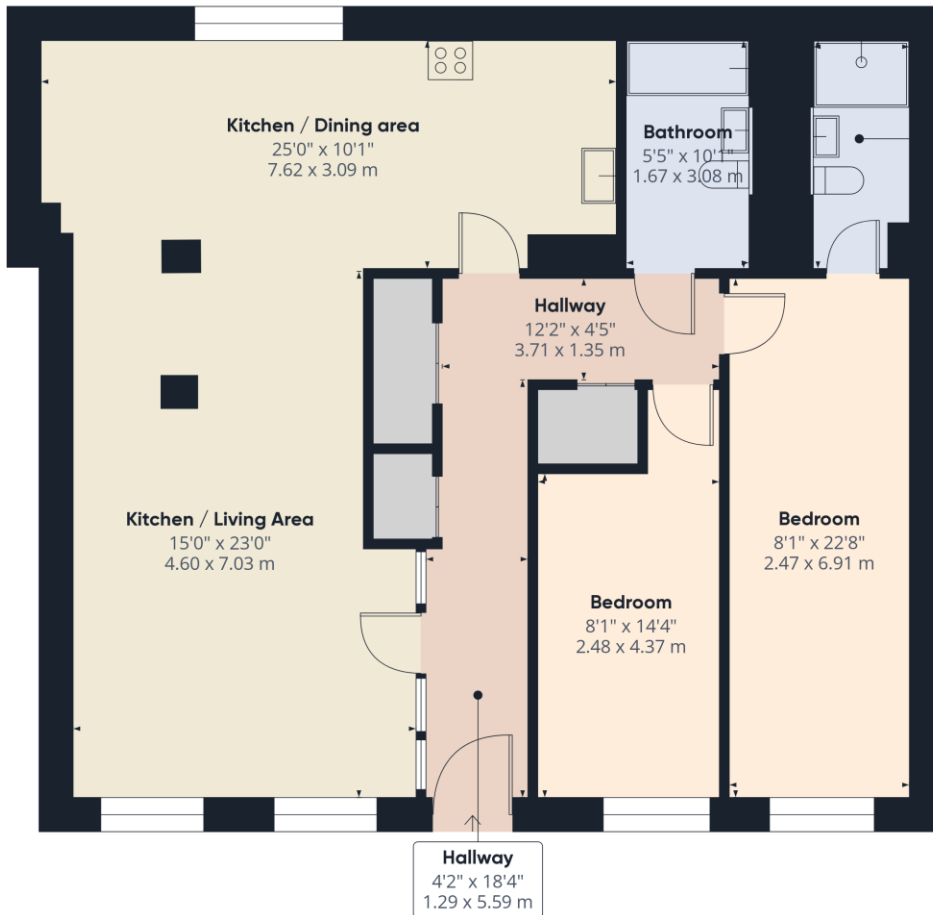
*We are aware that there are planned cladding works to be carried out at Queens Wharf in the near future.

AT A GLANCE

- Large Two Bedroom Town Centre Apartment
- Riverside Setting
- Secure Gated Off Road Parking
- Council tax band E
- Unfurnished
- Available 28th February
- Pets considered







En suite
4'5" x 10'2"
1.37 x 3.11 m

Approximate total area⁽¹⁾
1153.46 ft²
107.16 m²

(1) Excluding balconies and terraces

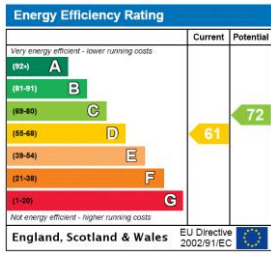
While every attempt has been made to ensure accuracy, all measurements are approximate, not to scale. This floor plan is for illustrative purposes only.
Calculations were based on RICS IPMS 3C standard. Please note that calculations were adjusted by a third party and therefore may not comply with RICS IPMS 3C.

GIRAFFE360

This floorplan is for illustration purposes only and is not to scale. The position and size of doors, windows, appliances and other features are approximate.

Deposit: £1,846.15
Holding Deposit: £369.23
Council Tax Band: E

Where no figures are shown, we have been unable to ascertain the information. All figures that are shown were correct at the time of printing.



Reading | 0118 4022 300 | reading@winkworth.co.uk



for every step...

winkworth.co.uk

Winkworth wishes to inform prospective buyers and tenants that these particulars are a guide and act as information only. All our details are given in good faith and believed to be correct at the time of printing but they don't form part of an offer or contract. No Winkworth employee has authority to make or give any representation or warranty in relation to this property. All fixtures and fittings, whether fitted or not are deemed removable by the vendor unless stated otherwise and room sizes are measured between internal wall surfaces, including furnishings.