



WARRINGTON CRESCENT, LONDON, W9 £3,995,000 FREEHOLD

A wonderful opportunity to purchase a unique freehold house (Approx 2460 sqft), with private parking, forming part of a sweeping crescent of stucco fronted period houses, located on one of Little Venice's most sought-after roads with use and views of the well-known Crescent Communal gardens. The house has been custom designed, arranged over three floors with a stunning conservatory leading onto a large roof terrace overlooking the communal gardens, a large kitchen/ family room, four en-Suite bedrooms, reception room, a galleried study area and a guest cloakroom. Warrington Crescent is situated close to all the local amenities offered by this fashionable area including the boutiques shops, cafes on Clifton Road (Approx. 0.3 miles), the famous Regents Canal and the underground at Warwick Avenue (Approx. 0.1 miles) Bakerloo Line.

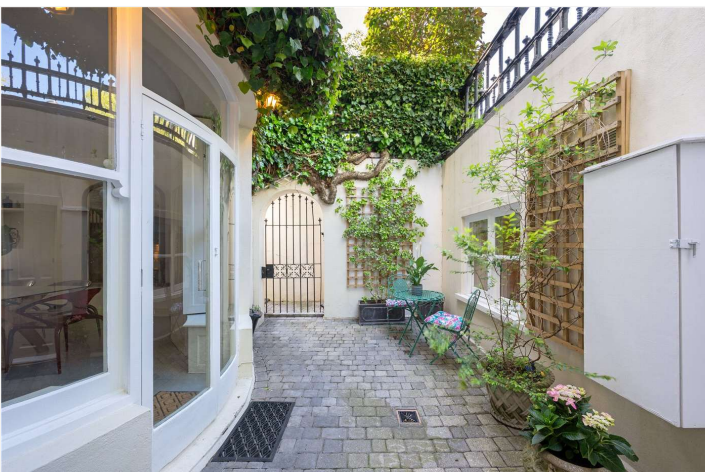
Entrance Hall | Reception Room | Kitchen/ Family Room | Conservatory | Roof Terrace |
Four Bedroom Suites | Guest Cloakroom | Front Patio | Parking | Communal Gardens

View our virtual tour here: https://youtu.be/0rxB3q_aZFQ?feature=shared

Winkworth

for every step...

winkworth.co.uk/maida-vale



Warrington Crescent, W9

Approximate Area = 214.1 sq m / 2304 sq ft

Outbuilding = 14.5 sq m / 156 sq ft

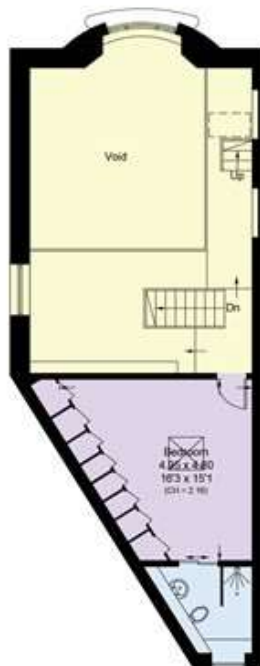
Total = 228.6 sq m / 2460 sq ft



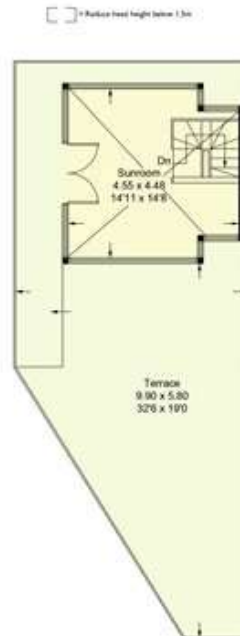
Lower Ground Floor
Approximate Area = 75.7 sq m / 815 sq ft



Ground Floor
Approximate Area = 70.2 sq m / 756 sq ft

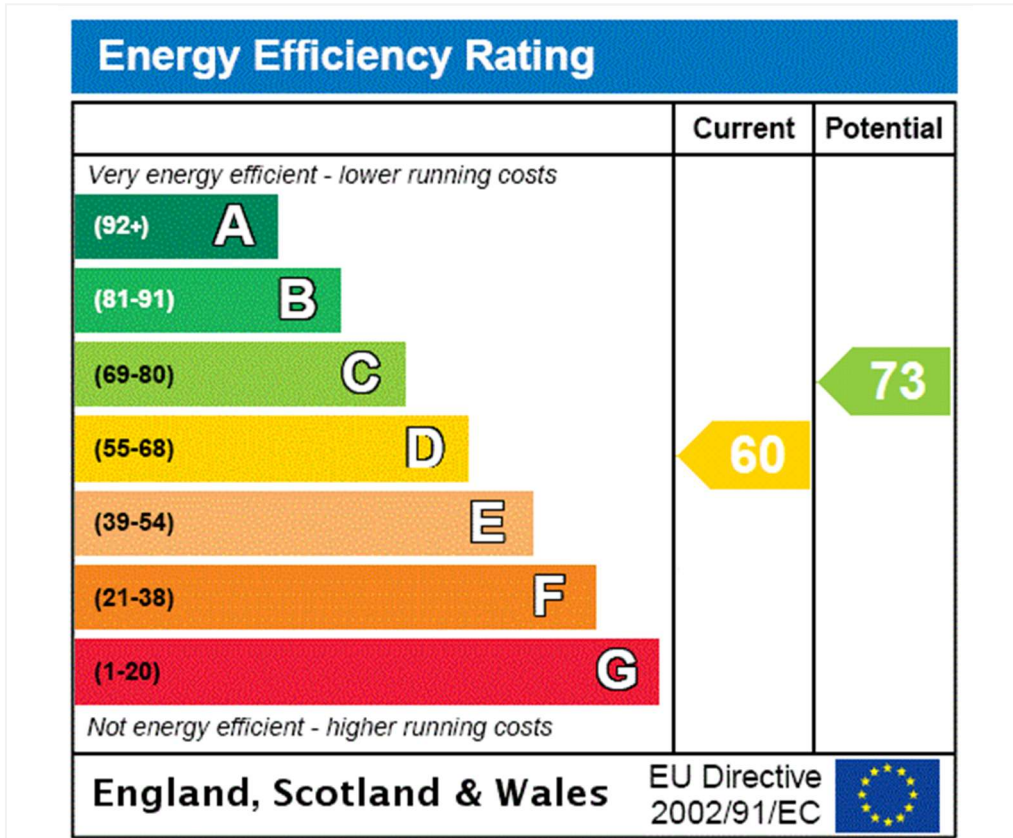


First Floor
Approximate Area = 49.0 sq m / 527 sq ft



Second Floor
Approximate Area = 19.1 sq m / 205 sq ft

Surveyed and drawn in accordance with the International property measurements standards (IPMS 2: Residential) Not drawn to scale unless stated. Whilst every care is taken in the preparation of this plan, please check all dimensions, shapes and compass bearings before making any decisions reliant upon them.



Tenure: Freehold

Service Charge: £340 per annum

Council Tax Band: H

Where no figures are shown, we have been unable to ascertain the information. All figures that are shown were correct at the time of printing.

Where no figures are shown, we have been unable to ascertain the information. All figures that are shown were correct at the time of printing. These particulars are not an offer or contract, nor part of one. You should not rely on statements by Winkworth in the particulars or by word of mouth or in writing "information" as being factually accurate about the property, its condition or its value. Winkworth does not have any authority to make any representations about the property, and accordingly any information given is entirely without responsibility on the part of the agents, seller(s) or lessor(s). These particulars are prepared on the basis of the information supplied by our client and are a rough guide for information only. The photographs show only certain parts of the property. We are not able to check all of the information and therefore are unable to guarantee accuracy. All interested parties are therefore advised to undertake all necessary inspections and checks that they deem appropriate. Where displayed, the square footage is taken from the floor plans, which are created by an independent supplier. These measurements are approximate and included for illustrative purposes only. The measurements may vary. Winkworth does not make any representation as to the accuracy of these measurements and you should seek to verify them for yourself. Winkworth accept no liability for any loss you may suffer if you rely on these measurements. All fixtures and fittings, whether fitted or not are deemed removable by the vendor unless stated. Any reference to alterations to, or use of, any part of the property does not mean that any necessary planning, building regulations or other consent has been obtained. Amenities and appliances have not been tested



Maida Vale | 211-213 Sutherland Avenue, London, W9 1RU | 020 7289 1692 | maidavale@winkworth.co.uk

for every step...

winkworth.co.uk/maida-vale

Winkworth wishes to inform prospective buyers and tenants that these particulars are a guide and act as information only. All our details are given in good faith and believed to be correct at the time of printing but they don't form part of an offer or contract. No Winkworth employee has authority to make or give any representation or warranty in relation to this property. All fixtures and fittings, whether fitted or not are deemed removable by the vendor unless stated otherwise and room sizes are measured between internal wall surfaces, including furnishings.