



DURHAM TERRACE, W2
£1,395,000 SHARE OF FREEHOLD

**A VERY SPACIOUS AND BRIGHT THREE BEDROOM GARDEN
MAISONETTE IN THIS MUCH SOUGHT AFTER AND PEACEFUL ENCLAVE
IN NOTTING HILL.**

Notting Hill Sales | 0207 727 3227 | nottinghill@winkworth.co.uk

Winkworth

for every step...

winkworth.co.uk



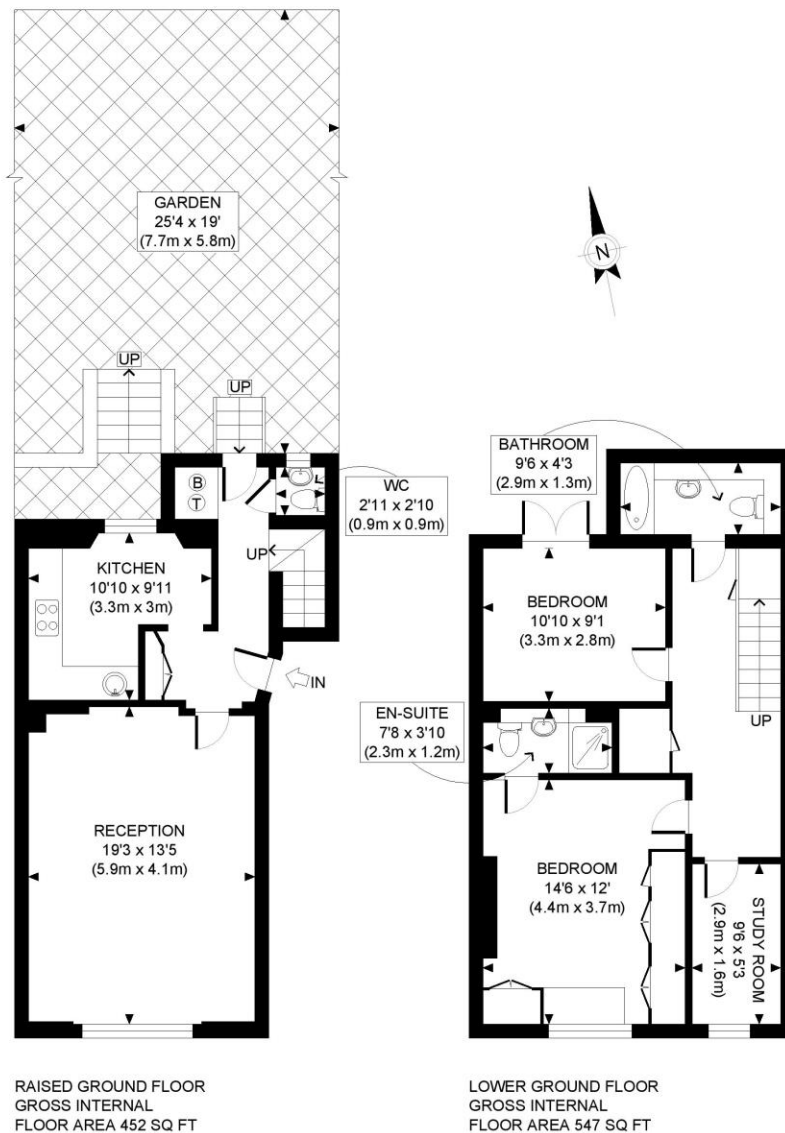
DESCRIPTION:

Situated on the raised ground and lower ground floors of a charming period conversion the accommodation extends to 999sq.ft and contains many period features such as large sash windows, cornicing and window shutters. On the ground floor is a large south facing reception room with wooden floor, fireplace and built-in cabinets, to the rear of the ground floor is a sperate kitchen with large window overlooking the garden and built in wall and floor units, there is a guest loo and a door to the rear garden also on this level. Downstairs are three bedrooms, the principal bedroom is ensuite while there is a further bathroom. Double French doors lead from the second bedroom to the rear garden with patio area and mature trees.

LOCATION:

Durham Terrace is an imposing, attractive and peaceful street running between Alexander Street and Westbourne Gardens, just to the east of Porchester Road and within easy walking distance of the many shops and transport links of Queensway and Westbourne Grove as well as great transport links at Paddington Station, Bayswater, Royal Oak Queens way and the A40.



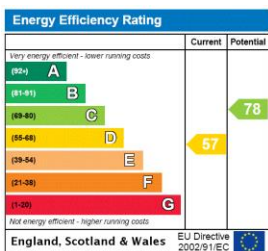


Winkworth

This plan is for illustrative purposes only and should be used as such by any prospective client. Whilst every attempt has been made to ensure the accuracy of the Floor Plan contained here, measurements of the doors, windows, rooms and any other items are approximate and no responsibility is taken for any errors, omissions, or misstatement. The services, systems and appliances shown have not been tested and no guarantee as to the operability or efficiency can be given.

PROPERTY PHOTO PLANS
THE STOP SHOP FOR PROPERTY PHOTOGRAPHERS

This floorplan is for illustration purposes only and is not to scale. The position and size of doors, windows, appliances and other features are approximate.



Utilities:

- Gas – Mains
- Electricity – Mains
- Waste – Mains Sewerage
- Water – Mains
- Broadband – Fiber

Tenure: Share of Freehold

Term: 86 year and 2 months

Service Charge: £1,150 per annum

Ground Rent: Nil

Council Tax Band: E

Where no figures are shown, we have been unable to ascertain the information. All figures that are shown were correct at the time of printing.

Notting Hill Sales | 0207 727 3227 | nottinghill@winkworth.co.uk



for every step...

winkworth.co.uk

Winkworth wishes to inform prospective buyers and tenants that these particulars are a guide and act as information only. All our details are given in good faith and believed to be correct at the time of printing but they don't form part of an offer or contract. No Winkworth employee has authority to make or give any representation or warranty in relation to this property. All fixtures and fittings, whether fitted or not are deemed removable by the vendor unless stated otherwise and room sizes are measured between internal wall surfaces, including furnishings.