



COLIN CRESCENT, COLINDALE, LONDON, NW9
£680,000 FREEHOLD

MUCH LOVED END OF TERRACE FAMILY HOME WITH TIMELESS APPEAL

Kingsbury | 020 8204 0000 | kingsbury@winkworth.co.uk

Winkworth

for every step...

winkworth.co.uk



Nestled in a desirable location moments from Colindale's Edgware Road, this charming home offers an blend of character, living space, and potential. The ground floor, boasts two separate reception rooms providing versatile living & entertaining spaces, enhanced by beamed ceiling, a lovely fireplace, & unique original stained glass feature windows adding a touch of period charm. The well-appointed kitchen is both practical & stylish, offering an attractive cooking/ dining space. Moving upstairs, you'll find two double bedrooms, & a comfortable single bedroom ideal for children, a guest room, or home office. The family bathroom completes this floor. Externally, the property continues to impress. A generous raised patio area offers the perfect spot for summer barbecues & alfresco dining, overlooking the lovingly maintained extensive lawn. Additional features include side gate access to the garden, a private driveway parking, and scope to extend(STPP). This cherished home is ready to welcome its next family. Don't miss the opportunity to make it yours!



Winkworth

for every step...

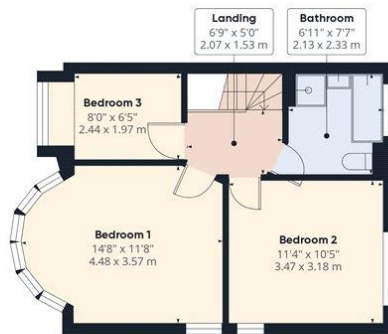


Winkworth

for every step...



Ground Floor



Floor 1

Approximate total area⁽¹⁾

936.89 ft²
87.04 m²

Balconies and terraces

527.65 ft²
49.02 m²

(1) Excluding balconies and terraces

While every attempt has been made to ensure accuracy, all measurements are approximate, not to scale. This floor plan is for illustrative purposes only.

Calculations are based on RICS IPMS 3C standard.

GIRAFFE360

This floorplan is for illustration purposes only and is not to scale. The position and size of doors, windows, appliances and other features are approximate.



Tenure: Freehold

Council Tax Band: E - Barnet

Where no figures are shown, we have been unable to ascertain the information. All figures that are shown were correct at the time of printing.

Kingsbury | 020 8204 0000 | kingsbury@winkworth.co.uk



for every step...

winkworth.co.uk

Winkworth wishes to inform prospective buyers and tenants that these particulars are a guide and act as information only. All our details are given in good faith and believed to be correct at the time of printing but they don't form part of an offer or contract. No Winkworth employee has authority to make or give any representation or warranty in relation to this property. All fixtures and fittings, whether fitted or not are deemed removable by the vendor unless stated otherwise and room sizes are measured between internal wall surfaces, including furnishings.