



THORNWOOD ROAD, HITHER GREEN, LONDON, SE13 5RG
£1,250,000 FREEHOLD

A STUNNING, IMPRESSIVE AND EXTENDED, FOUR BEDROOM, TWO BATHROOM, EDWARDIAN HOME SPANNING JUST UNDER 1,650 SQ.FT WITHIN THIS POPULAR LOCATION VERY CLOSE TO HITHER GREEN STATION AND MANOR HOUSE GARDENS.

Blackheath | 0208 8520999 | blackheath@winkworth.co.uk

Winkworth

winkworth.co.uk

See things differently

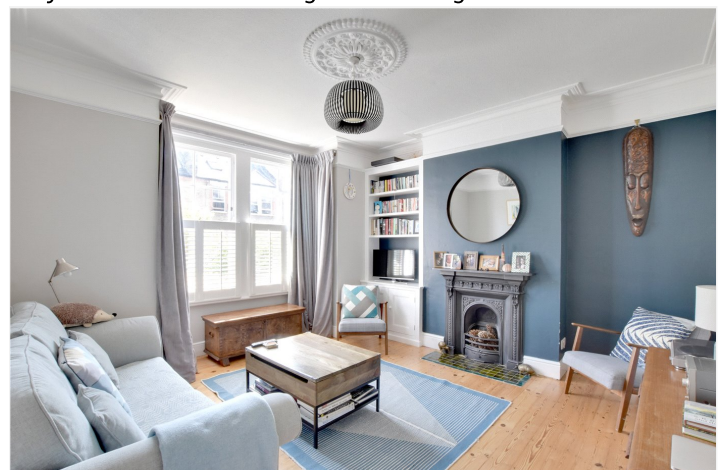


DESCRIPTION:

The accommodation is arranged over three floors and briefly comprises; entrance hall with downstairs WC and a large front reception room with built in alcove storage. To the rear is a fantastic open plan kitchen/diner/family room with a luxury kitchen with stone worktops, island and integrated appliances, lantern skylight, bi-folding doors to the garden and double doors to a separate utility room/pantry. The first floor provides three bedrooms, two of which are very large doubles, and a beautiful modern family bathroom. Finally, the top floor has been converted to provide a huge fourth double bedroom with a modern ensuite shower room, Juliette balcony and eaves storage. To the rear is a beautiful garden extending to approx. 35ft with terrace, lawn, flower beds and shed. The property is in excellent decorative order with features including; high ceilings, period features, stripped floorboards, cornicing, feature fireplaces, sash windows, plantation shutters and gas fired central heating.

This is a wonderful family home and is sold chain free. Your immediate viewing is essential. Video tour can be seen at Winkworth.co.uk

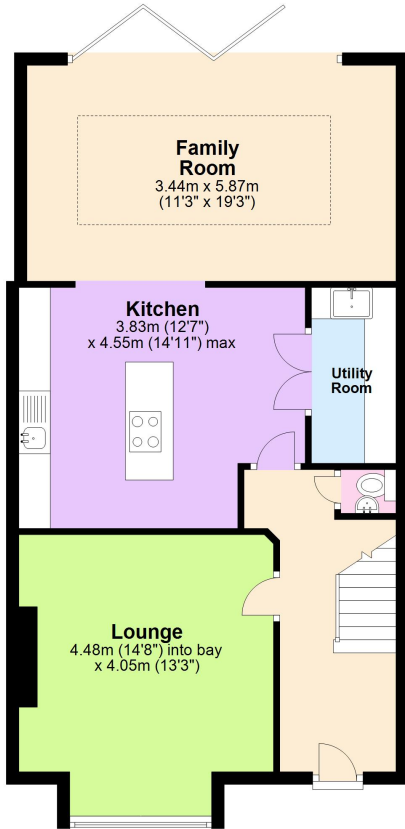
The property is located just a stone's throw from the hugely popular Manor House Gardens with children's play park, a pond and a farmers market every Saturday. A short walk is the vibrant centre of Hither Green which includes a Sainsbury's Local, French Patisserie Cafe (La Delice), an incredible Deli and Bottle Shop (Found Hope Store), cocktail bar (Drink@Bob's) a florist (Otto's Greenhouse) an Italian restaurant and pizzeria (Sapore Vero), craft beer and chocolate shop (Park Fever), gastropub The Station Hotel and of course Hither Green Station. Travel time to London Bridge is 9 minutes from Hither Green Station, which also services Charing Cross, London Cannon Street, Waterloo East and Victoria. Lewisham Station (DLR) is a 17 minute walk. Just a 15 minute walk away is Blackheath Village with its array of boutique shops, farmers market, restaurants, bars and station. There are several Ofsted rated 'outstanding' primary schools and excellent children's day nursery options close by in Lee and Blackheath. Colfes is just a 15 minute walk and there are school bus pickups locally for both Eltham College and Farringtons.





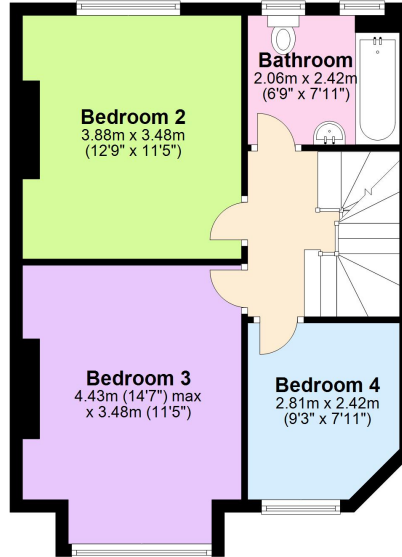
Ground Floor

Approx. 68.6 sq. metres (737.9 sq. feet)



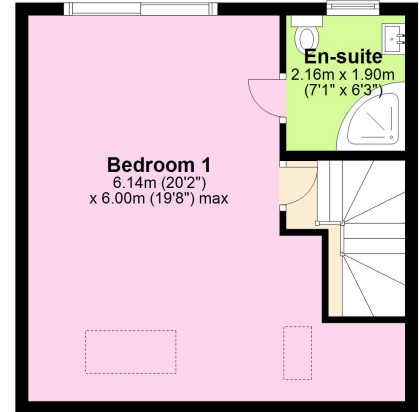
First Floor

Approx. 47.5 sq. metres (511.3 sq. feet)



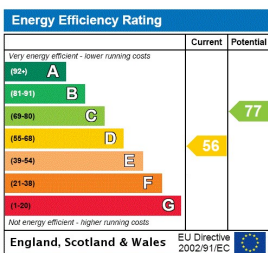
Second Floor

Approx. 36.7 sq. metres (394.7 sq. feet)



Total area: approx. 152.7 sq. metres (1643.9 sq. feet)

This floorplan is for illustration purposes only and is not to scale. The position and size of doors, windows, appliances and other features are approximate. Any lease and service charge details have been provided by the vendor. Any interest party should have these checked by a solicitor as part of the purchase process.



Blackheath | 0208 8520999 | blackheath@winkworth.co.uk



winkworth.co.uk

See things differently

Winkworth wishes to inform prospective buyers and tenants that these particulars are a guide and act as information only. All our details are given in good faith and believed to be correct at the time of printing but they don't form part of an offer or contract. No Winkworth employee has authority to make or give any representation or warranty in relation to this property. All fixtures and fittings, whether fitted or not are deemed removable by the vendor unless stated otherwise and room sizes are measured between internal wall surfaces, including furnishings.