



DERONDA ROAD, SE24
£1,595 PER MONTH PART FURNISHED

A TWO DOUBLE BEDROOM TOP FLOOR, SPLIT
LEVEL VICTORIAN CONVERSION CLOSE TO
HERNE HILL AND TULSE HILL

Herne Hill | 0207 501 8950 | hernehill@winkworth.co.uk

Winkworth

for every step...

winkworth.co.uk

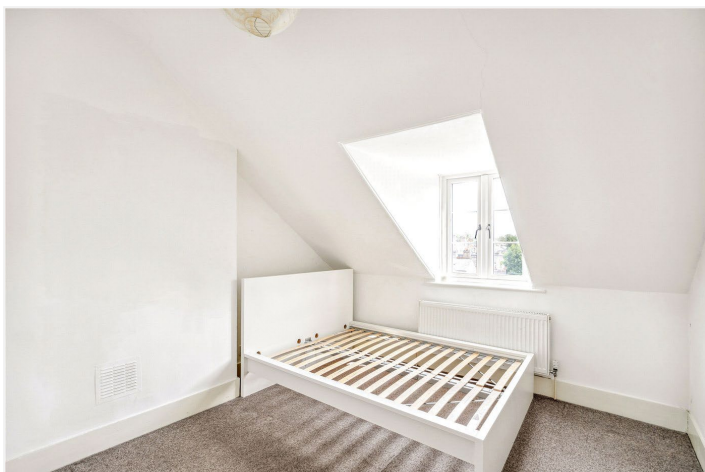


DESCRIPTION:

This charming split-level top floor flat has two double bedrooms, a reception room, a separate kitchen (with a gas hob, an electric oven and a washing machine), a bathroom with a shower over the bath and storage. The property is well situated for Herne Hill and Tulse Hill train stations and close to the lovely Brockwell Park and Lido. The flat is part-furnished and available now. This two double bedroom split level top floor Victorian conversion is ideally located for the amenities of Herne Hill and Tulse Hill with good transport links from Herne Hill and Tulse Hill train stations.

AT A GLANCE

- Top Floor Victorian Conversion Flat
- Reception
- Modern Kitchen
- Two Double Bedrooms
- Bathroom
- Part-Furnished
- Lambeth Council Tax Band: C
- Available Now





Deronda Road, London, SE24

Approximate Gross Internal Area = 617 sq ft / 57.3 sq m
 Reduced Headroom = 25 sq ft / 2.3 sq m
 Total = 642 sq ft / 59.6 sq m

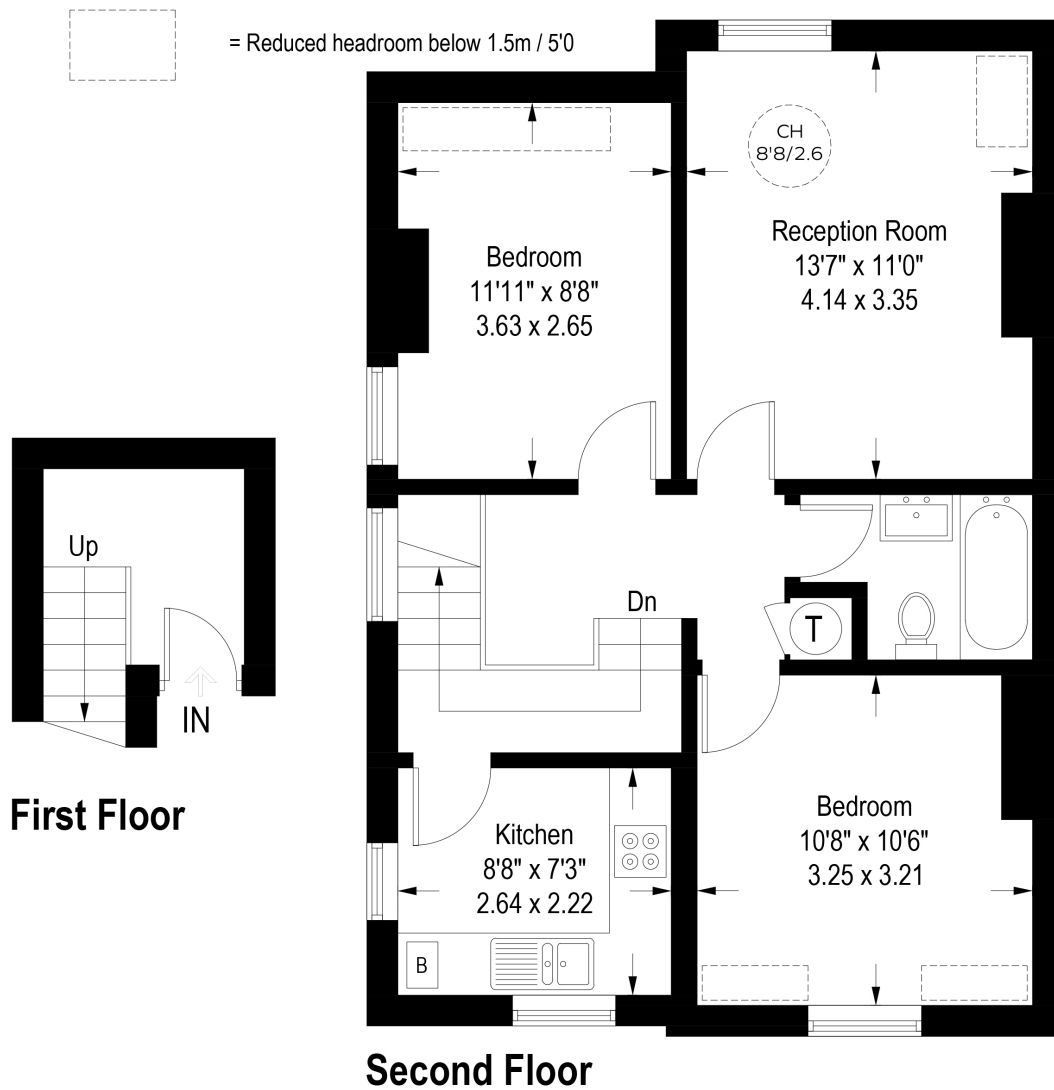
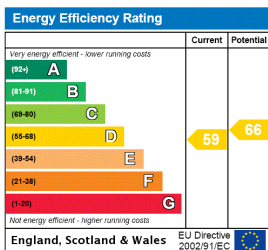


Illustration for identification purposes only, measurements are approximate, not to scale. (ID996090)

This floorplan is for illustration purposes only and is not to scale. The position and size of doors, windows, appliances and other features are approximate.



Herne Hill | 0207 501 8950 | hernehill@winkworth.co.uk



for every step...

winkworth.co.uk

Winkworth wishes to inform prospective buyers and tenants that these particulars are a guide and act as information only. All our details are given in good faith and believed to be correct at the time of printing but they don't form part of an offer or contract. No Winkworth employee has authority to make or give any representation or warranty in relation to this property. All fixtures and fittings, whether fitted or not are deemed removable by the vendor unless stated otherwise and room sizes are measured between internal wall surfaces, including furnishings.