



ANERLEY ROAD, SE20
£1,550 PER MONTH UNFURNISHED

NEWLY REFURBISHED SPLIT LEVEL ONE BED TO RENT BY ANERLEY STATION.

Crystal Palace | 02038693222 | crystalpalace@winkworth.co.uk

Winkworth

for every step...

winkworth.co.uk



DESCRIPTION:

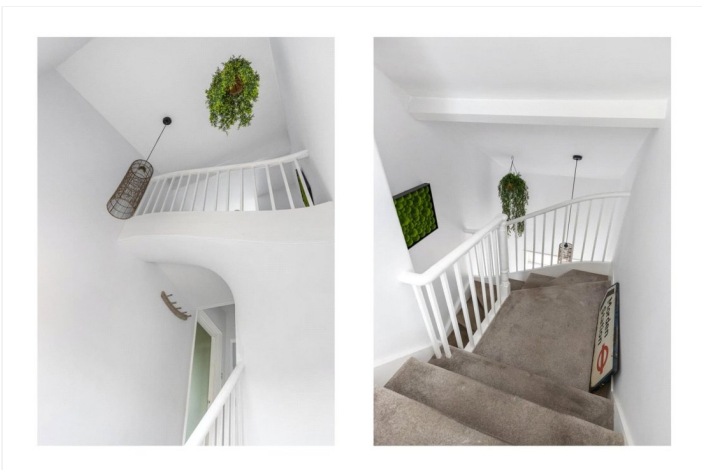
Winkworth is pleased to offer this one-bedroom split level flat for rent on Anerley Road.

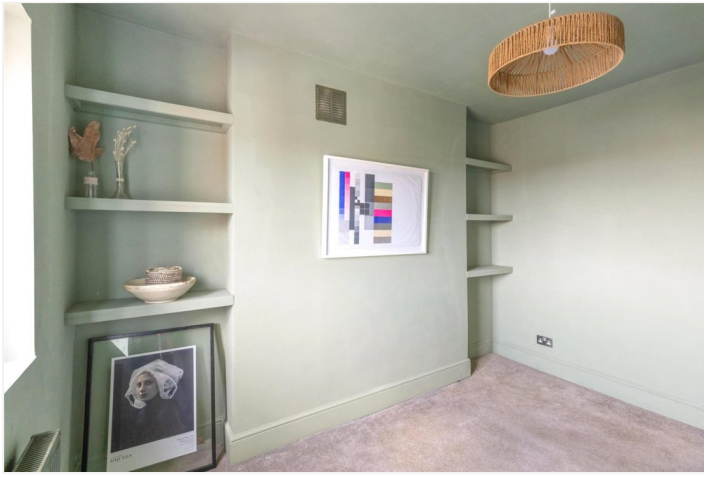
The property has recently been refurbished to a modern standard throughout and comprises entrance hallway, open plan kitchen and dining room, contemporary shower room, separate reception room or home office and good-sized double bedroom. The property offers an abundance of natural light, is offered unfurnished & available now.

The property is ideally located on Anerley Road a short walk to Anerley station which offers great links into Central London plus the Overground network. The open spaces of Crystal Palace Park and amenities on 'The Triangle' are a short distance away and has independent shops, café's, bars & restaurants plus local supermarkets, cinema, and gym.

AT A GLANCE

- One bedroom
- Open plan kitchen & dining room
- Separate reception or home office
- Double bedroom
- Shower room
- Split level
- Available now







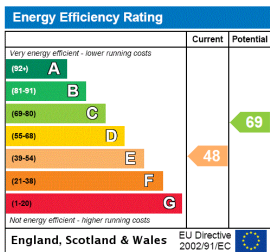
This floorplan is for illustration purposes only and is not to scale. The position and size of doors, windows, appliances and other features are approximate.

Deposit: £1,788.47 (5 weeks rent)

Holding Deposit: £357.70 (1 weeks rent)

Council Tax Band: C

Where no figures are shown, we have been unable to ascertain the information. All figures that are shown were correct at the time of printing.



Crystal Palace | 02038693222 | crystalpalace@winkworth.co.uk



for every step...

winkworth.co.uk

Winkworth wishes to inform prospective buyers and tenants that these particulars are a guide and act as information only. All our details are given in good faith and believed to be correct at the time of printing but they don't form part of an offer or contract. No Winkworth employee has authority to make or give any representation or warranty in relation to this property. All fixtures and fittings, whether fitted or not are deemed removable by the vendor unless stated otherwise and room sizes are measured between internal wall surfaces, including furnishings.