



## CHALLONER STREET, W14

£599,950 LEASEHOLD

An impressive one double bedroom flat with an additional study, situated in the heart of Barons Court, only minutes away from West Kensington train station.

Fulham & Parsons Green | 020 7731 3388 | [fulham@winkworth.co.uk](mailto:fulham@winkworth.co.uk)

**Winkworth**

for every step...

[winkworth.co.uk](http://winkworth.co.uk)



## DESCRIPTION:

The property benefits from a spacious light and bright reception room with a feature fireplace and doors opening up onto a small balcony. The generous sized bedroom has ample built-in storage and is served by a stylish bathroom.

Located to the rear of the flat, there is a well-equipped kitchen with excellent storage solutions and there is a further single/study room.

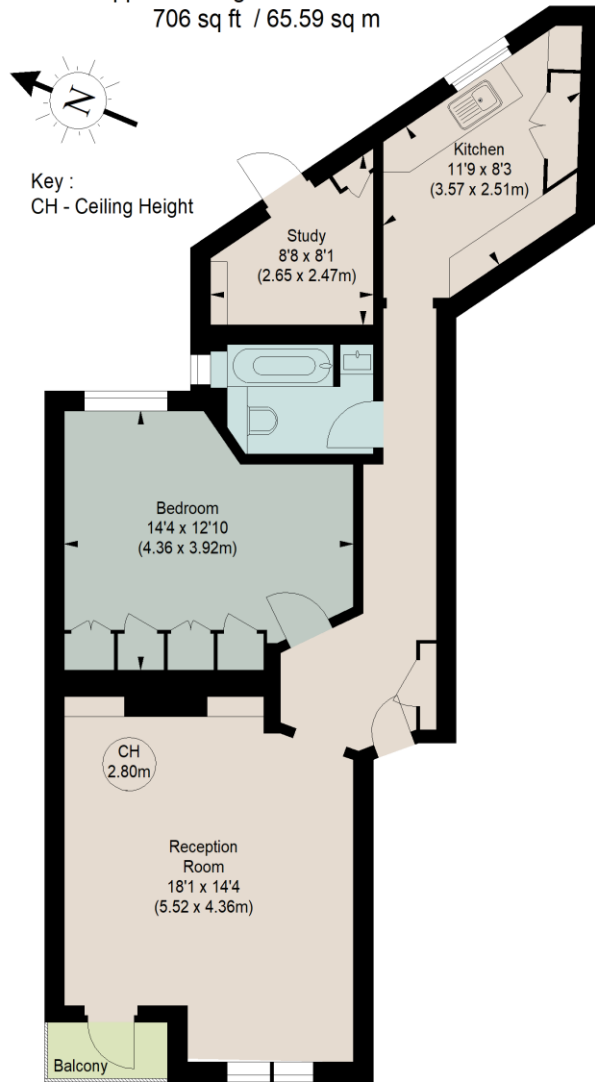
Challoner Mansions is situated in the heart of Barons Court and is therefore extremely well located for the transport links offered by both Barons Court and West Kensington underground stations. Local amenity green space can be found at Normand Park and also situated nearby is the world-famous Queens Club tennis club.





## CHALLONER MANSIONS, W14

Approximate gross internal area  
706 sq ft / 65.59 sq m



### SECOND FLOOR

The floor plan is not to scale and measurements and areas shown are approximate and therefore should be used for illustrative purposes only. The plan has been prepared in accordance with the RICS code of Measuring Practice and whilst we have confidence in the information produced, it must not be relied on. If there is any aspect of particular importance, you should carry out or commission your own inspection of the property.

This floorplan is for illustration purposes only and is not to scale. The position and size of doors, windows, appliances and other features are approximate.

**Tenure:** Share of freehold

**Term:** 999 years

**Service Charge:** £3,250 per annum

**Ground Rent:** £ 0 Annually (subject to increase)

**Council Tax Band:** E

Where no figures are shown, we have been unable to ascertain the information. All figures that are shown were correct at the time of printing.

Fulham & Parsons Green | 020 7731 3388 | fulham@winkworth.co.uk

**Winkworth**

for every step...

[winkworth.co.uk](http://winkworth.co.uk)

Winkworth wishes to inform prospective buyers and tenants that these particulars are a guide and act as information only. All our details are given in good faith and believed to be correct at the time of printing but they don't form part of an offer or contract. No Winkworth employee has authority to make or give any representation or warranty in relation to this property. All fixtures and fittings, whether fitted or not are deemed removable by the vendor unless stated otherwise and room sizes are measured between internal wall surfaces, including furnishings.