



OATFIELD HOUSE, PERRY COURT, LONDON, N15
£200,000 LEASEHOLD

**ONE BEDROOM FLAT ON THE SECOND FLOOR OF
A WELL POSITIONED, PURPOSE-BUILT
DEVELOPEMENT WITH A PRIVATE BALCONY**

Winkworth Highbury | 020 7989 7000 | highbury@winkworth.co.uk

Winkworth

for every step...

winkworth.co.uk



DESCRIPTION:

Cash Buyers Only

This apartment set within Oatfield House, a purpose built development nestled at the heart of N15. This delightful one bedroom flat offers a perfect blend of modern and urban living, making it an ideal choice for young professionals or an excellent BTL investment.

The living area is flooded with an abundance of natural light due to the windows in each room alongside a well-proportioned balcony. The outdoor space is versatile and lends perfectly to entertaining guests. Off of the living area is the refurbished kitchen fitted with both sleek and stylish storage cupboards and appliances. The generous double bedroom spans the width of the flat and offers plentiful space for storage. To the rear you will find a generous contemporary bathroom that completes the space.

A private, off-street parking space is also an option via the local council. The flat also benefits from a concierge service.

Located in a vibrant and highly-sought neighbourhood, there are a number of amenities such as cafes, shops and transport links. Oatfield House sits just 0.6 miles away from Seven Sisters Tube Station, offering swift connections to the city and a variety of Bus links can be found nearby.

Any associated charges including, but not limited to, service charge, ground rent and sinking funds outlined in the marketing material is an approximation calculated using information provided by and described by the client at the time of instruction. The actual cost may be subject to change and therefore we recommend all interested parties carry out their own enquiries.

Winkworth

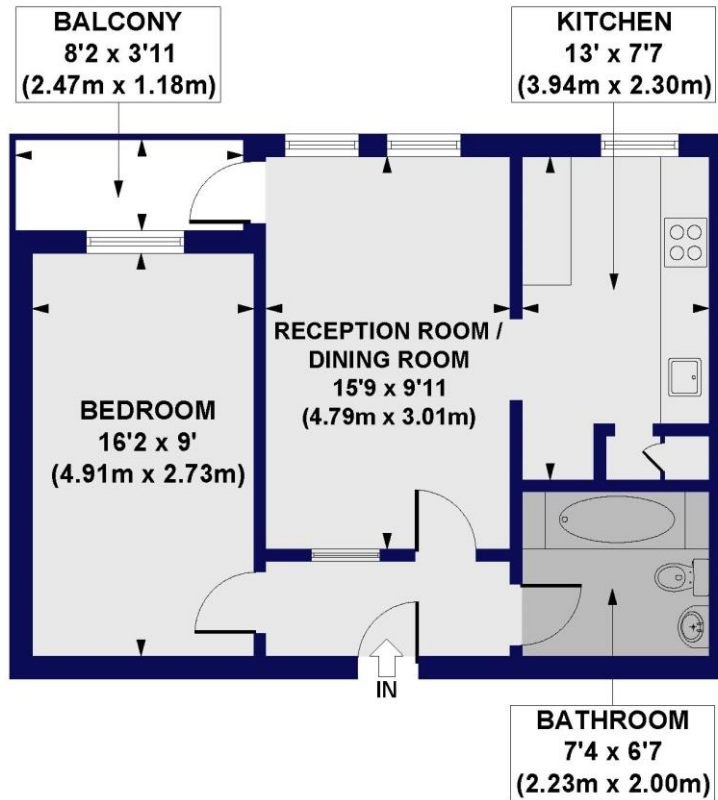
for every step...



Winkworth

for every step...

Oatfield House, Perry Court, N15
Approx. Gross Internal Floor Area 510 sq. ft / 47.39 sq. m



SECOND FLOOR

All measurements of walls, doors, windows, fittings and appliances, including their size and location, are shown as standard sizes and do not constitute any warranty or representation by the seller, their agent or CP Creative. Any intending purchaser must satisfy himself by inspection or otherwise as to the correctness of the information contained in these plans. This plan is for illustrative purposes only and should be used as such by any prospective purchasers.

Winkworth

This floorplan is for illustration purposes only and is not to scale. The position and size of doors, windows, appliances and other features are approximate.

Winkworth Highbury | 020 7989 7000 | highbury@winkworth.co.uk

Winkworth

for every step...

winkworth.co.uk

Winkworth wishes to inform prospective buyers and tenants that these particulars are a guide and act as information only. All our details are given in good faith and believed to be correct at the time of printing but they don't form part of an offer or contract. No Winkworth employee has authority to make or give any representation or warranty in relation to this property. All fixtures and fittings, whether fitted or not are deemed removable by the vendor unless stated otherwise and room sizes are measured between internal wall surfaces, including furnishings.