



Grenville Place, South Kensington, London, SW7

£850 per week* / £3,683.33 per month – Furnished

A stylish, beautifully refurbished two bedroom, two bathroom apartment located in this attractive white stucco period building.

2 Bedrooms | 1 Reception Room | 3 Bathrooms | Patio | Lower Ground Floor Flat | 870 Approx sq ft | EPC: C

APPLICANT FEES MAY BE APPLICABLE
DEPOSIT OF 5 WEEKS' RENT
HOLDING DEPOSIT OF 1 WEEK'S RENT

Winkworth

winkworth.co.uk

for every step...



DESCRIPTION

Accessed via the secure communal entrance, this spacious property is arranged over the lower ground floor. With wooden floors and contemporary fixtures and fittings, the flat features two well-proportioned double bedrooms with generous built-in storage, two en-suite bathrooms and a further guest cloakroom. The open-plan kitchen/reception room offers a wonderful living space, with a modern, fully fitted kitchen and a large bay window, providing ample natural light. The property further benefits from a small private patio located off the master bedroom, and is available from the beginning of April on a furnished basis.



ACCOMMODATION

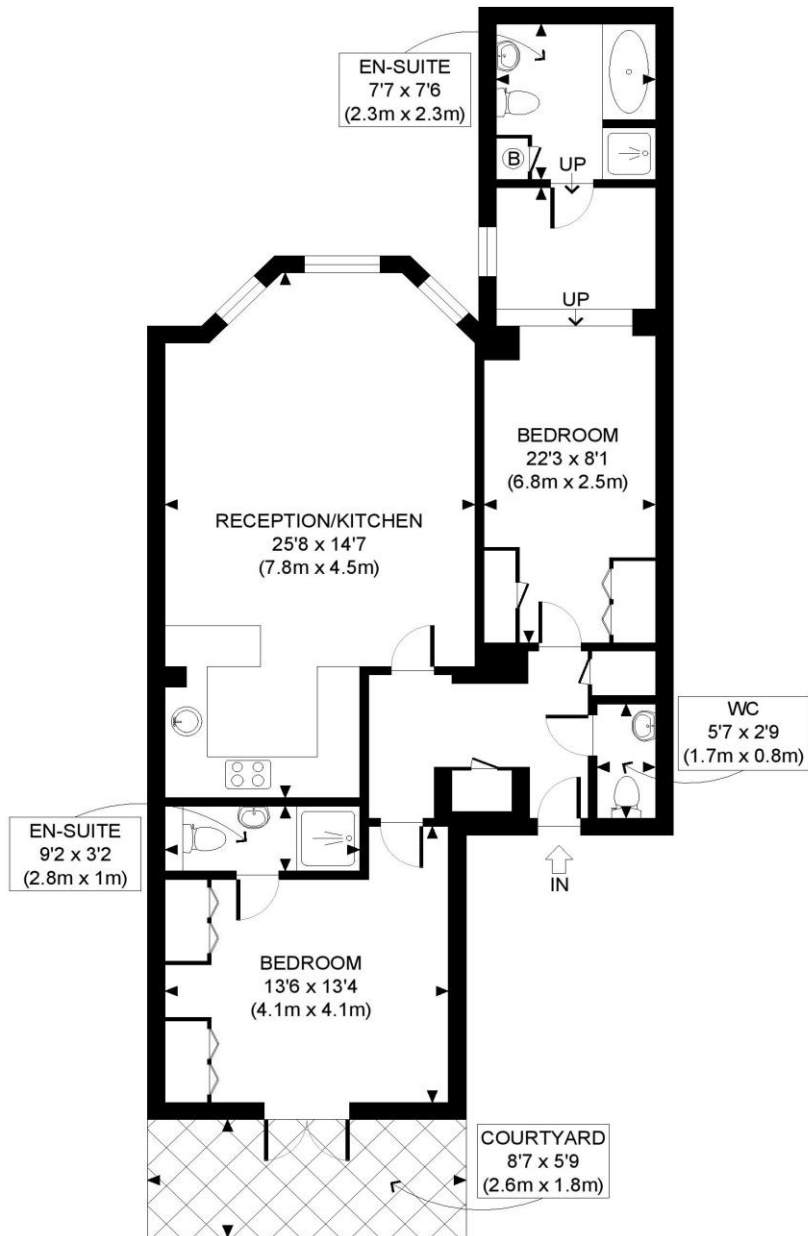
2 Bedrooms, 1 Reception Room,
3 Bathrooms, Lower Ground Floor Flat,
Furnished, 870 Approx Sq ft

COUNCIL TAX BAND

Band F



| Energy Efficiency Rating | | Current | Potential |
|---|----------|-------------------------|-----------|
| Very energy efficient - lower running costs | | | |
| (92+) | A | | |
| (81-91) | B | | |
| (69-80) | C | 75 | 81 |
| (55-68) | D | | |
| (39-54) | E | | |
| (21-38) | F | | |
| (1-20) | G | | |
| Not energy efficient - higher running costs | | | |
| England, Scotland & Wales | | EU Directive 2002/91/EC | |



LOWER GROUND FLOOR
GROSS INTERNAL
FLOOR AREA 870 SQ FT



APPROX. GROSS INTERNAL FLOOR AREA: 870 SQ FT/ 81 SQM

Winkworth

This plan is for illustrative purposes only and should be used as such by any prospective client. Whilst every attempt has been made to ensure the accuracy of the Floor Plan contained here, measurements of the doors, windows, rooms and any other items are approximate and no responsibility is taken for any errors, omissions, or misstatement. The services, systems and appliances shown have not been tested and no guarantee as to the operability or efficiency can be given.

PROPERTY PHOTO PLANS
ONE STOP SHOP FOR PROPERTIES MARKETING

This floorplan is for illustration purposes only and is not to scale. The position and size of doors, windows, appliances and other features are approximate.

**Please note, the rent cannot be paid on a weekly basis*

South Kensington Lettings | 020 7370 6767 | lettings.southken@winkworth.co.uk

winkworth.co.uk

Winkworth

for every step...

Winkworth wishes to inform prospective buyers and tenants that these particulars are a guide and act as information only. All our details are given in good faith and believed to be correct at the time of printing but they don't form part of an offer or contract. No Winkworth employee has authority to make or give any representation or warranty in relation to this property. All fixtures and fittings, whether fitted or not are deemed removable by the vendor unless stated otherwise and room sizes are measured between internal wall surfaces, including furnishings.