



KENTON ROAD, HARROW, MIDDLESEX, HA3  
**£749,999 FREEHOLD**

## FIVE BEDROOM SEMI DETACHED HOUSE

Kingsbury | 020 8204 0000 | [kingsbury@winkworth.co.uk](mailto:kingsbury@winkworth.co.uk)

**Winkworth**

for every step...

[winkworth.co.uk](http://winkworth.co.uk)





Located in the vibrant heart of Kenton, this expansive property offers a fantastic opportunity to create your dream home, with a wealth of living space ready to be tailored to your unique tastes and lifestyle. The house features a generously sized reception room, perfect for entertaining or relaxing with family, and a large kitchen that serves as the heart of the home. The property's five well-proportioned bedrooms provide ample space for family living, guests, or even a home office. With three well-appointed bathrooms, convenience is at the forefront of this residence. Outside, you'll find a well-sized garden. Off-street parking adds to the property's convenience, ensuring you never have to worry about finding a space. Located in a prime area, this home puts the amenities of Kenton right on your doorstep. Shops, restaurants, schools, and parks are all within walkable distance.



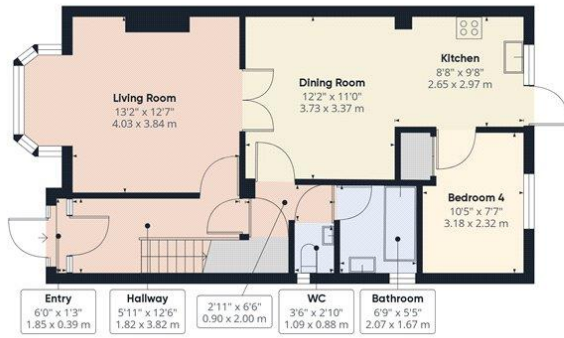
for every step...



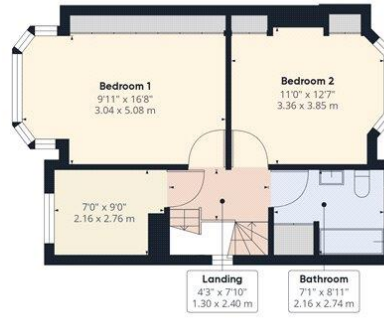
**Winkworth**

for every step...





Ground Floor



Floor 1



Floor 2

**Approximate total area<sup>(1)</sup>**  
 1427.07 ft<sup>2</sup>  
 132.58 m<sup>2</sup>

**Reduced headroom**  
 79.32 ft<sup>2</sup>  
 7.37 m<sup>2</sup>

(1) Excluding balconies and terraces

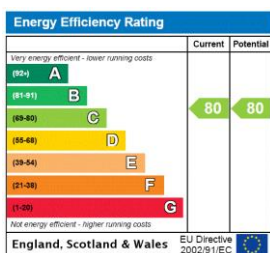
Reduced headroom  
 ..... Below 5 ft/1.5 m

While every attempt has been made to ensure accuracy, all measurements are approximate, not to scale. This floor plan is for illustrative purposes only.

Calculations are based on RICS IPMS 3C standard.

GIRAFFE360

This floorplan is for illustration purposes only and is not to scale. The position and size of doors, windows, appliances and other features are approximate.



**Tenure:** Freehold

**Council Tax Band:** E - Brent

Where no figures are shown, we have been unable to ascertain the information. All figures that are shown were correct at the time of printing.

Kingsbury | 020 8204 0000 | kingsbury@winkworth.co.uk

Winkworth

for every step...

winkworth.co.uk

Winkworth wishes to inform prospective buyers and tenants that these particulars are a guide and act as information only. All our details are given in good faith and believed to be correct at the time of printing but they don't form part of an offer or contract. No Winkworth employee has authority to make or give any representation or warranty in relation to this property. All fixtures and fittings, whether fitted or not are deemed removable by the vendor unless stated otherwise and room sizes are measured between internal wall surfaces, including furnishings.