



TINTERN STREET, SW4

£399,950 SHARE OF FREEHOLD

A CHARMING TWO BEDROOM VICTORIAN CONVERSION FLAT SITUATED BETWEEN CLAPHAM NORTH AND BRIXTON

Streatham | 020 8769 6699 | streatham@winkworth.co.uk

Winkworth

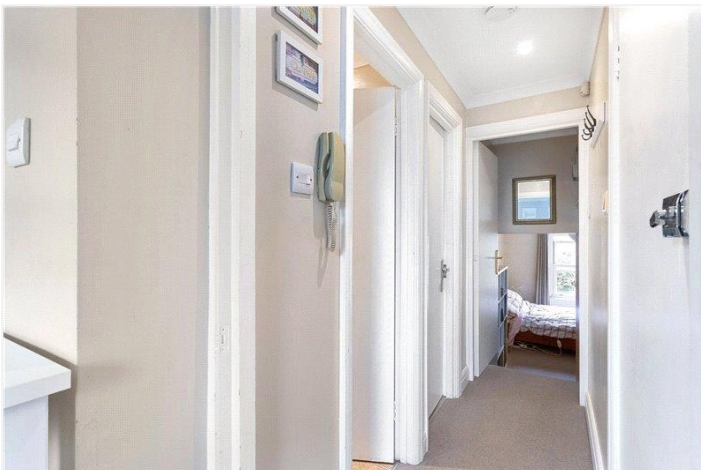
for every step...

winkworth.co.uk



DESCRIPTION:

Enter the flat on the first floor and the accommodation is arranged to provide open plan kitchen reception at the front, bathroom, and two bedrooms to the rear of the flat. Upon entering, you are greeted by a hallway and immediately to your left, you will find the spacious open-plan kitchen reception with breakfast bar and views overlooking the quiet residential street below. The space allows for multiple sofas and coffee table and feels bright and airy thanks to two large sash windows. The kitchen is equipped with an electric fan-powered oven and gas hob and extractor, sink, ample storage and worktop space, space for a fridge/freezer and washing machine. The bathroom is well-sized and offers a bath with overhead shower, sink with vanity, towel rail and W.C. Head down the corridor, and the smaller of the two bedrooms is found on the left-hand side with the larger found at the end of the corridor. The smaller bedroom fits a single bed or alternatively could be used as a great study for those working from home. The larger double bedroom at the very rear provides space to accommodate a double bed with additional space reserved for free-standing furniture and





TINTERN STREET. SW4
1 BEDROOM FLAT

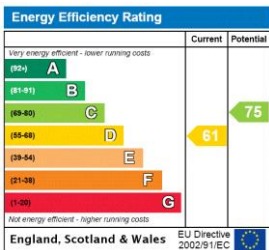
Approximate gross floor area
447 SQ.FT / 41.5 SQ.M.



FIRST FLOOR

Copyright: These plans should not be reproduced by any other person, without permission.
Floorplan produced for Winkworth by Floorplanners 07801 228850

This floorplan is for illustration purposes only and is not to scale. The position and size of doors, windows, appliances and other features are approximate.



Tenure: Share of Freehold

Term: 997 year and 9 months

Council Tax Band: C

Where no figures are shown, we have been unable to ascertain the information. All figures that are shown were correct at the time of printing.

Herne Hill | 0207 501 8950 | hernehill@winkworth.co.uk

Winkworth

for every step...

winkworth.co.uk

Winkworth wishes to inform prospective buyers and tenants that these particulars are a guide and act as information only. All our details are given in good faith and believed to be correct at the time of printing but they don't form part of an offer or contract. No Winkworth employee has authority to make or give any representation or warranty in relation to this property. All fixtures and fittings, whether fitted or not are deemed removable by the vendor unless stated otherwise and room sizes are measured between internal wall surfaces, including furnishings.