



MORTIMER ROAD, LONDON, NW10
£1,650,000 FREEHOLD

A STUNNING FOUR BEDROOM FAMILY HOME IN ONE OF THE BEST LOCATIONS IN KENSAL RISE CLOSE TO CHAMBERLAYNE ROAD AND QUEENS PARK.

Kensal Rise & Queens Park | 0208 960 4947 | kensalrise@winkworth.co.uk

Winkworth



LOCATION:

Mortimer Road is perfectly situated just to the west of Queens Park, meaning that the park itself is less than a 1/2 mile from the front door. Transport links and amenities are excellent with Chamberlayne Road or College Road very close buy and use of Kensal Green or Kensal Rise stations. Highly Recommended.

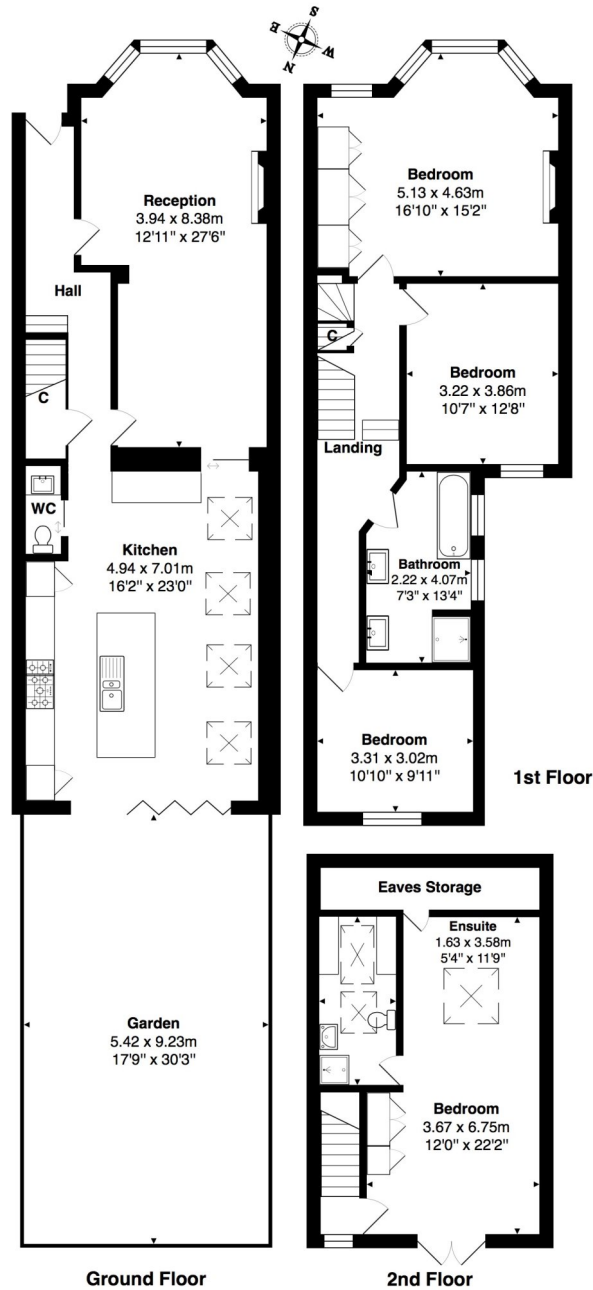


Winkworth



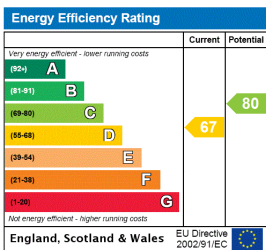
DESCRIPTION: This beautiful house has been finished to the highest standards and has accommodation spread over three floors measuring approximately 2000 sq. ft. On the ground floor the property has been extended into the side return to create a wonderful kitchen / diner with island unit and bi-folding doors to the garden at the rear. Towards the front of the building there is a double aspect reception with a light and airy three part bay window. Upstairs the first floor comprises of three good sized bedrooms and a large family bathroom with shower and bath. The loft space has also been converted to create a superb master / fourth bedroom with en-suite shower room.

Winkworth



Total Area: 182.6 m² ... 1966 ft² (excluding garden, eaves storage)
 All measurements are approximate and for display purposes only

This floorplan is for illustration purposes only and is not to scale. The position and size of doors, windows, appliances and other features are approximate.



Kensal Rise & Queens Park | 0208 960 4947 | kensalrise@winkworth.co.uk



winkworth.co.uk

See things differently

winkworth wishes to inform prospective buyers and tenants that these particulars are a guide and act as information only. All our details are given in good faith and believed to be correct at the time of printing but they don't form part of an offer or contract. No winkworth employee has authority to make or give any representation or warranty in relation to this property. All fixtures and fittings, whether fitted or not are deemed removable by the vendor unless stated otherwise and room sizes are measured between internal wall surfaces, including furnishings.