



ROE END, KINGSBURY, LONDON, NW9
OFFERS IN EXCESS OF £525,000 FREEHOLD

GORGEOUS THREE BEDROOM MID TERRACE HOME IN ROE GREEN VILLAGE

Kingsbury | 020 8204 0000 | kingsbury@winkworth.co.uk

Winkworth

for every step...

winkworth.co.uk



Welcome to this gorgeous three-bedroom mid-terrace home nestled in the picturesque Roe Green Village. This charming property exudes a warm and homely feel throughout, offering a delightful retreat from the hustle and bustle of everyday life yet within walking distance from Kingsbury's enclave of amenities. As you step inside, you are greeted by a lovely reception room featuring a pretty fireplace, creating a cozy ambiance perfect for relaxing evenings. The ground floor also hosts a versatile bedroom, ideal for guests or a home office, and a spacious, stylish kitchen and dining area. Upstairs, you'll find two well-sized bedrooms, each with its own unique charm and plenty of natural light, as well as a well-appointed bathroom. Externally, the property boasts a gorgeous rear garden, a serene oasis offering the perfect outdoor setting for relaxation, gardening, or alfresco dining. Discover the idyllic lifestyle awaiting you in Roe Green Village. An internal viewing is highly advised.

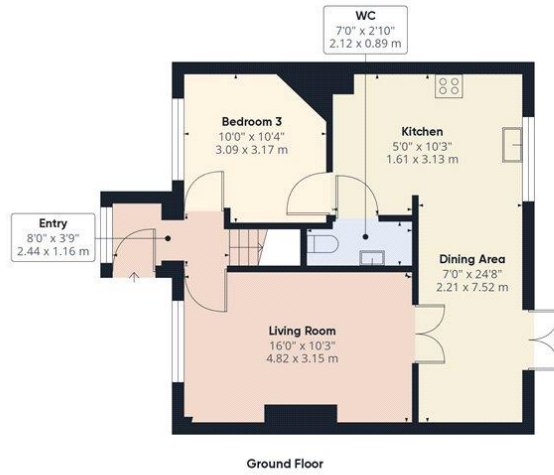


for every step...



Winkworth

for every step...



Ground Floor



Floor 1

Approximate total area⁽¹⁾

907.07 ft²
84.27 m²

Reduced headroom

0.43 ft²
0.04 m²

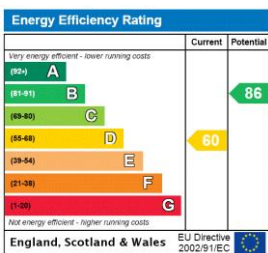
(1) Excluding balconies and terraces

☐ Reduced headroom
(below 1.5m/4.92ft)

While every attempt has been made to ensure accuracy, all measurements are approximate, not to scale. This floor plan is for illustrative purposes only.

GIRAFFE360

This floorplan is for illustration purposes only and is not to scale. The position and size of doors, windows, appliances and other features are approximate.



Tenure: Freehold

Council Tax Band: D

Where no figures are shown, we have been unable to ascertain the information. All figures that are shown were correct at the time of printing.

Kingsbury | 020 8204 0000 | kingsbury@winkworth.co.uk



for every step...

winkworth.co.uk

Winkworth wishes to inform prospective buyers and tenants that these particulars are a guide and act as information only. All our details are given in good faith and believed to be correct at the time of printing but they don't form part of an offer or contract. No Winkworth employee has authority to make or give any representation or warranty in relation to this property. All fixtures and fittings, whether fitted or not are deemed removable by the vendor unless stated otherwise and room sizes are measured between internal wall surfaces, including furnishings.