



COMPTON ROAD, LONDON, N1
£850,000 LEASEHOLD

**A SENSATIONAL, TWO DOUBLE BEDROOM,
RAISED GROUND FLOOR APARTMENT IN
CANONBURY, N1.**

Stoke Newington | | stokenewington@winkworth.co.uk

Winkworth

winkworth.co.uk

See things differently



DESCRIPTION:

A stunning, two double bedroom apartment set across the raise ground floor of this handsome, Neo Georgian in Canonbury, N1. With views to the front of gorgeous period villas, and the rear beautifully communal gardens, the kerb appeal of the property is incredibly special. Accommodation comprises of a bright living room with east facing double sash windows overlooking a peaceful private road, while a recently renovated kitchen is set across the hallway. Both bedrooms are excellent doubles, the master bedroom benefitting from built in wardrobes while the second bedroom offers space for a desk. The property is completed with a contemporary, modern bathroom and further separate wc.

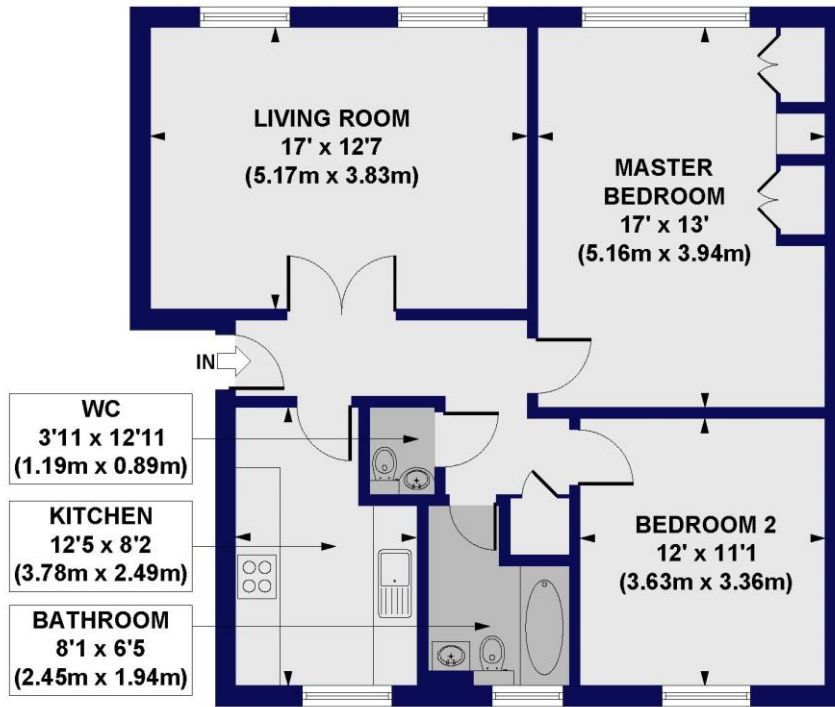
Compton Road is located in the much sought after area of Canonbury, tucked away off St Paul's Road and moments from Upper Street. Fantastic shopping amenities are provided close by with a selection of independent shops and boutiques as well as Waitrose on Highbury corner and high street stores at Angel. Transport links are best served by Highbury & Islington station which is less than a 5-minute walk away, offering Victoria, London Overground and Thameslink services whilst further over ground services are also found at Canonbury station. Angel underground station is also a short distance away and a variety of bus links can be found on Highbury corner providing easy access to the City and West End.

Winkworth



Winkworth

Compton Road, N1
 Approx. Gross Internal Floor Area 827 sq. ft / 76.86 sq. m

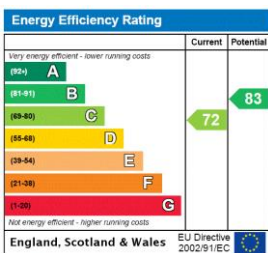


RAISED GROUND FLOOR

All measurements of walls, doors, windows, fittings and appliances, including their size and location, are shown as standard sizes and do not constitute any warranty or representation by the seller, their agent or CP Creative. Any intending purchaser must satisfy himself by inspection or otherwise as to the correctness of the information contained in these plans. This plan is for illustrative purposes only and should be used as such by any prospective purchasers.

Winkworth

This floorplan is for illustration purposes only and is not to scale. The position and size of doors, windows, appliances and other features are approximate.



Stoke Newington | | stokenewington@winkworth.co.uk



winkworth.co.uk

See things differently

Winkworth wishes to inform prospective buyers and tenants that these particulars are a guide and act as information only. All our details are given in good faith and believed to be correct at the time of printing but they don't form part of an offer or contract. No Winkworth employee has authority to make or give any representation or warranty in relation to this property. All fixtures and fittings, whether fitted or not are deemed removable by the vendor unless stated otherwise and room sizes are measured between internal wall surfaces, including furnishings.