



**CLAREWOOD COURT, SEYMOUR PLACE, MARYLEBONE, W1H
£950,000 LEASEHOLD**

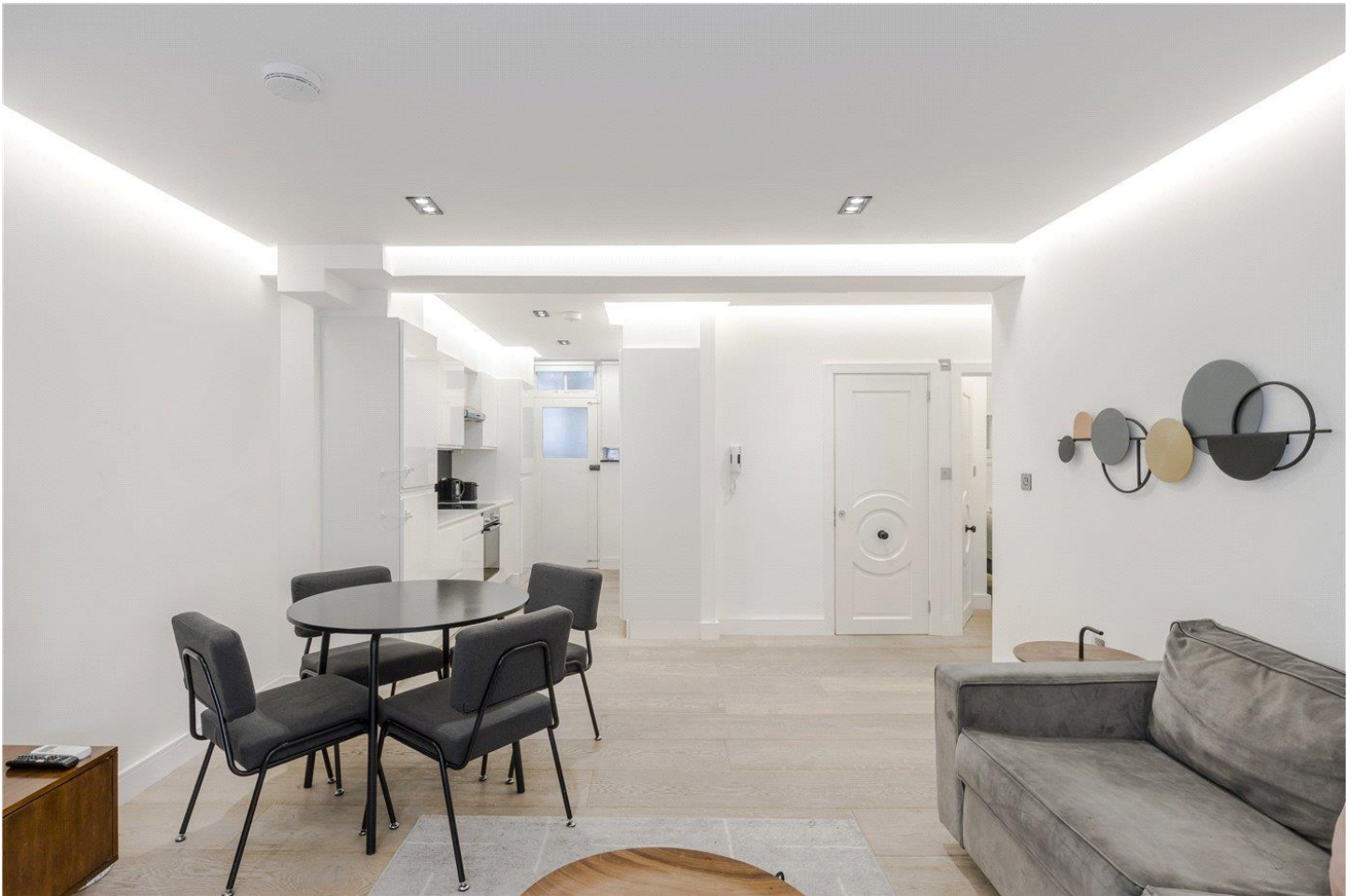
**LOCATED IN W1H - MARYLEBONE, A BEAUTIFULLY PRESENTED
AND IMAGINATIVELY DESIGNED, SECOND FLOOR (WITH LIFT),
TWO DOUBLE BEDROOM APARTMENT, SET IN A POPULAR
PURPOSE BUILT PORTERED BUILDING.**

Paddington | 020 7467 5770 | paddington@winkworth.co.uk

Winkworth

for every step...

winkworth.co.uk



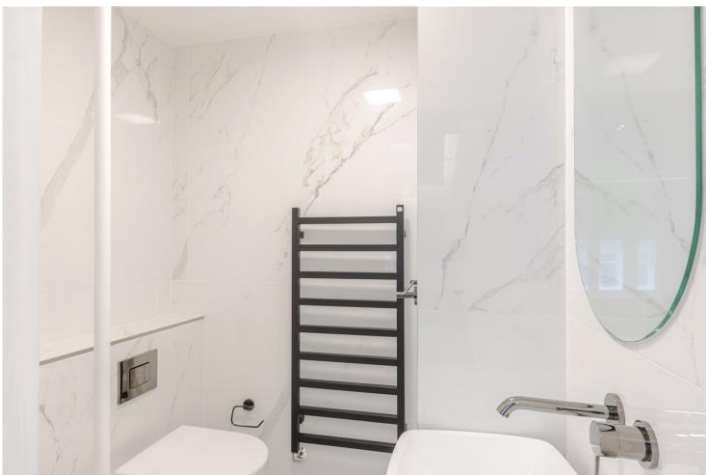
DESCRIPTION: The property is located on the west side of Marylebone, well placed for the amenities; including Marylebone High Street, Oxford Street, Mayfair, together with the green open spaces of Regents Park and Hyde Park. The property is well served for multiple transport hubs; including Edgware Road (Circle / District & Hammersmith & City) Marylebone St (Bakerloo), Marble Arch (Central), Baker Street (Jubilee/Bakerloo), and Paddington (Elizabeth & mainline Station).

LEASE: ABOUT 175 YEARS REMAINING. | SERVICE CHARGE - ABOUT £6,800 PER ANNUM | RESERVE FUND - ABOUT £2,475 PER ANNUM | GROUND RENT - ABOUT £150 PER ANNUM | COUNCIL TAX BAND: E



Winkworth

for every step...

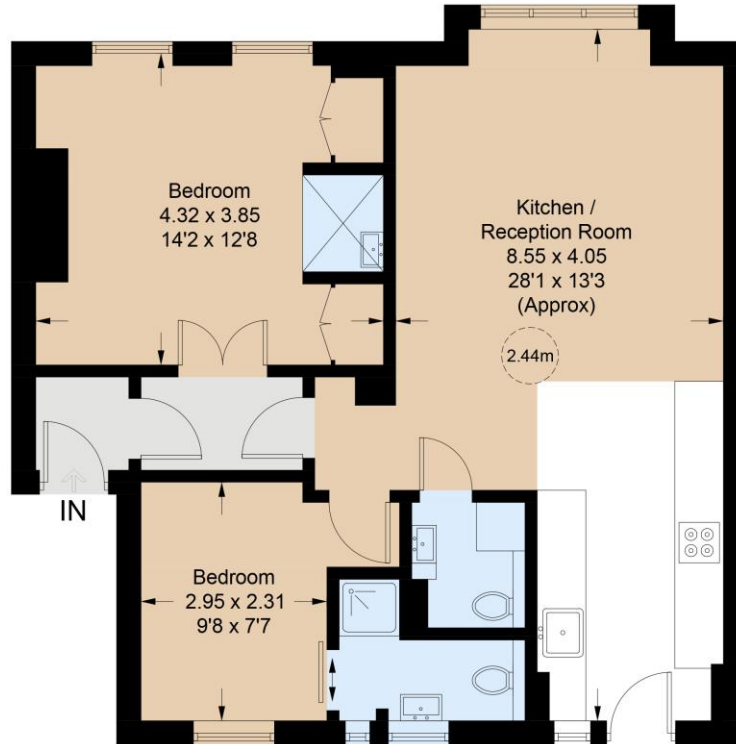


Winkworth

for every step...

Clarewood Court

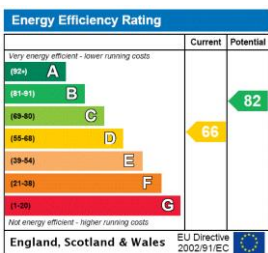
Approximate Gross Internal Area = 66.4 sq m / 715 sq ft



Second Floor

Illustration for identification purposes only, measurements are approximate, not to scale. floorplansUsketch.com © (ID1002386)

This floorplan is for illustration purposes only and is not to scale. The position and size of doors, windows, appliances and other features are approximate.



Paddington | 020 7467 5770 | paddington@winkworth.co.uk



for every step...

winkworth.co.uk

Winkworth wishes to inform prospective buyers and tenants that these particulars are a guide and act as information only. All our details are given in good faith and believed to be correct at the time of printing but they don't form part of an offer or contract. No Winkworth employee has authority to make or give any representation or warranty in relation to this property. All fixtures and fittings, whether fitted or not are deemed removable by the vendor unless stated otherwise and room sizes are measured between internal wall surfaces, including furnishings.