



CRYSTAL PALACE ROAD, EAST DULWICH, LONDON, SE22
£600,000 SHARE OF FREEHOLD

**THIS BEAUTIFULLY PRESENTED LARGE TWO
BEDROOM GROUND FLOOR MAISONETTE IS
SITUATED RIGHT IN THE CENTRE OF EAST**

Dulwich | 020 8299 2722 | dulwich@winkworth.co.uk

Winkworth

Tenure Share of Freehold | Council Tax Band C – London Borough of Southwark
| Service Charge TBC

winkworth.co.uk

See things differently



DESCRIPTION:

Nestled in the heart of East Dulwich on the sought-after Crystal Palace Road, this beautifully presented three-bedroom maisonette spans the first and second floors of an elegant period property. Step into a home that effortlessly combines charm and modern living. The grand reception room offers the perfect space for relaxation or entertaining, while the generously sized kitchen is ideal for culinary adventures. Each of the three well-proportioned bedrooms provides comfort and versatility, complemented by ample storage throughout and a sleek, modern bathroom. Located on a tranquil stretch of Crystal Palace Road, this property is just moments away from the vibrant bars, boutique shops, and renowned restaurants of Lordship Lane. For commuters, both East Dulwich and Peckham Rye stations are within easy reach, offering direct connections to the East London tube line and beyond. With its prime location, stylish interiors, and abundant space, this maisonette is the perfect choice for those seeking the best of East Dulwich living

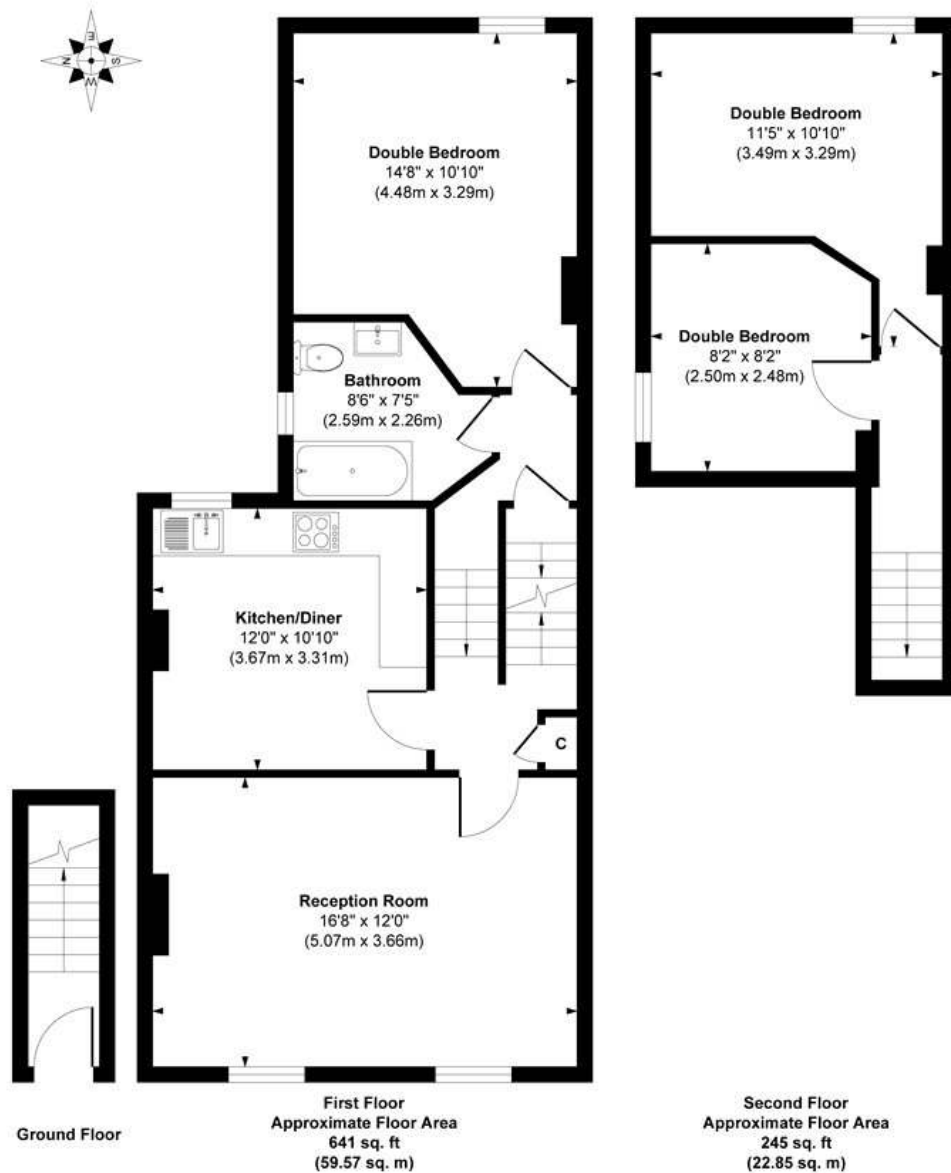
AT A GLANCE

- Two Double Bedrooms
- Ground Floor Maisonette
- Open Plan Kitchen-Reception
- Modern Bathroom
- Cellar
- Private Garden
- Share Of Freehold
- Quiet Location





Crystal Palace Road



Approx. Gross Internal Floor Area 886 sq. ft / 82.42 sq. m (Excluding Ground Floor)

Illustration for identification purposes only, measurements are approximate, not to scale.
Produced by Elements Property

This floorplan is for illustration purposes only and is not to scale. The position and size of doors, windows, appliances and other features are approximate.

Dulwich | 020 8299 2722 | dulwich@winkworth.co.uk

Winkworth

winkworth.co.uk

See things differently

Winkworth wishes to inform prospective buyers and tenants that these particulars are a guide and act as information only. All our details are given in good faith and believed to be correct at the time of printing but they don't form part of an offer or contract. No Winkworth employee has authority to make or give any representation or warranty in relation to this property. All fixtures and fittings, whether fitted or not are deemed removable by the vendor unless stated otherwise and room sizes are measured between internal wall surfaces, including furnishings.