



Sutherland Street, UK, SW1V

£2,550 PER MONTH

FURNISHED

AT A GLANCE

- Double Bedroom
- Reception
- Fitted Kitchen
- Washer/dryer & Dishwasher
- Good sized bathroom
- Roof Terrace

Winkworth

for every step...



Energy Efficiency Rating		Environmental Impact (CO ₂) Rating	
	Current	Potential	
Very energy efficient - lower running costs			Very environmentally friendly - lower CO ₂ emissions
(92-100) A			(92-100) A
(81-91) B			(81-91) B
(69-80) C			(69-80) C
(55-68) D			(55-68) D
(39-54) E			(39-54) E
(21-38) F			(21-38) F
(1-20) G			(1-20) G
Not energy efficient - higher running costs			Not environmentally friendly - higher CO ₂ emissions
		63	
			79
			63
			79

England, Scotland & Wales EU Directive 2002/91/EC

The energy efficiency rating is a measure of the overall efficiency of a home. The higher the rating the more energy efficient the home is and the lower the fuel bills will be.

England, Scotland & Wales EU Directive 2002/91/EC

The environmental impact rating is a measure of a home's impact on the environment in terms of carbon dioxide (CO₂) emissions. The higher the rating the less impact it has on the environment.

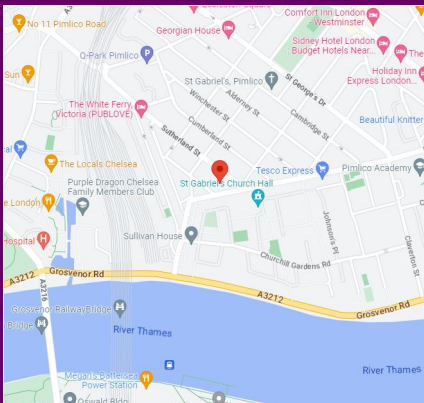
SUTHERLAND STREET, UK, SW1V

£2,550 PER MONTH
FURNISHED

A well presented and incredibly bright, one double bedroom apartment located in this handsome period conversion in the heart of Pimlico. The property benefits from a generous double bedroom and a superb private roof terrace. It is available to let from early September.

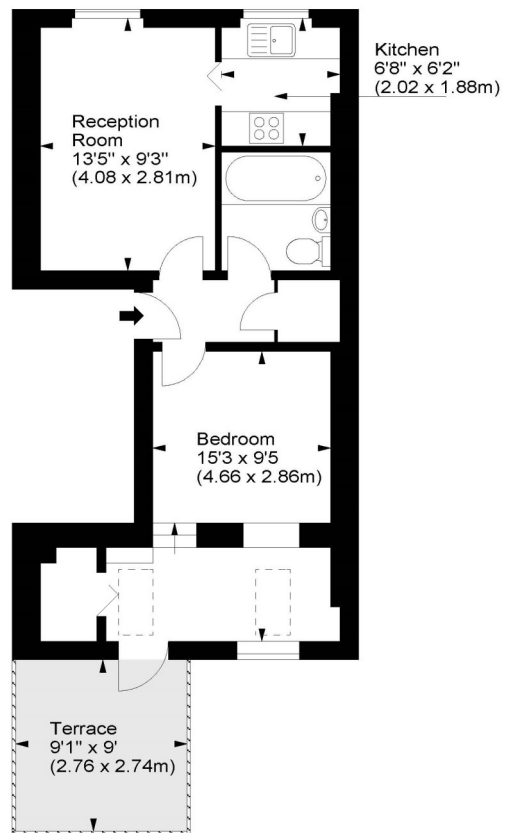
The property is presented in excellent decorative order throughout and accommodation comprises a comfortable reception room with space to dine and entertain, recently fitted modern kitchen and a smart family bathroom. The generous split level double bedroom has comprehensive built-in storage and provides plenty of space for a desk / home office. Of particular interest, is the magnificent private roof terrace to the rear which is perfect for al-fresco dining.

Situated within walking distance of local shops and amenities and also the



winkworth wishes to inform prospective buyers and tenants that these particulars are a guide and act as information only. All our details are given in good faith and believed to be correct at the time of printing but they don't form part of an offer or contract. No winkworth employee has authority to make or give any representation or warranty in relation to this property. All fixtures and fittings, whether fitted or not are deemed removable by the vendor unless stated otherwise and room sizes are measured between internal wall surfaces - including fire-chimneys.

Sutherland Street, SW1



Second Floor

For illustration purposes only. Not to scale.
All measurements are taken and shown at floor level.
www.r3photography.co.uk © Photography / Floor Plans / Lease Plans / EPCs



Pimlico & Westminster | 020 7828 1786 |
pimlico@winkworth.co.uk

winkworth.co.uk/pimlico

Winkworth

for every step...