



LANESBOROUGH COURT, CHILLINGWORTH ROAD, N7
£460 PER WEEK FURNISHED

A SPACIOUS FIRST FLOOR MODERN TWO BEDROOM APARTMENT WITH GREAT TRANSPORT LINKS

Islington | 0207 354 2480 | islington@winkworth.co.uk

Tenant Fees Apply: Details of fees for tenant referencing, tenancy agreement admin fees and renewal fees are available on the Winkworth website and the link can be found with the displayed rent for the property. Tenants should ensure they are fully conversant with these upfront fees and other costs that are involved at the outset of the tenancy before making an offer to rent and your local Winkworth office will provide written details upon request.

winkworth.co.uk

Winkworth

See things differently



DESCRIPTION:

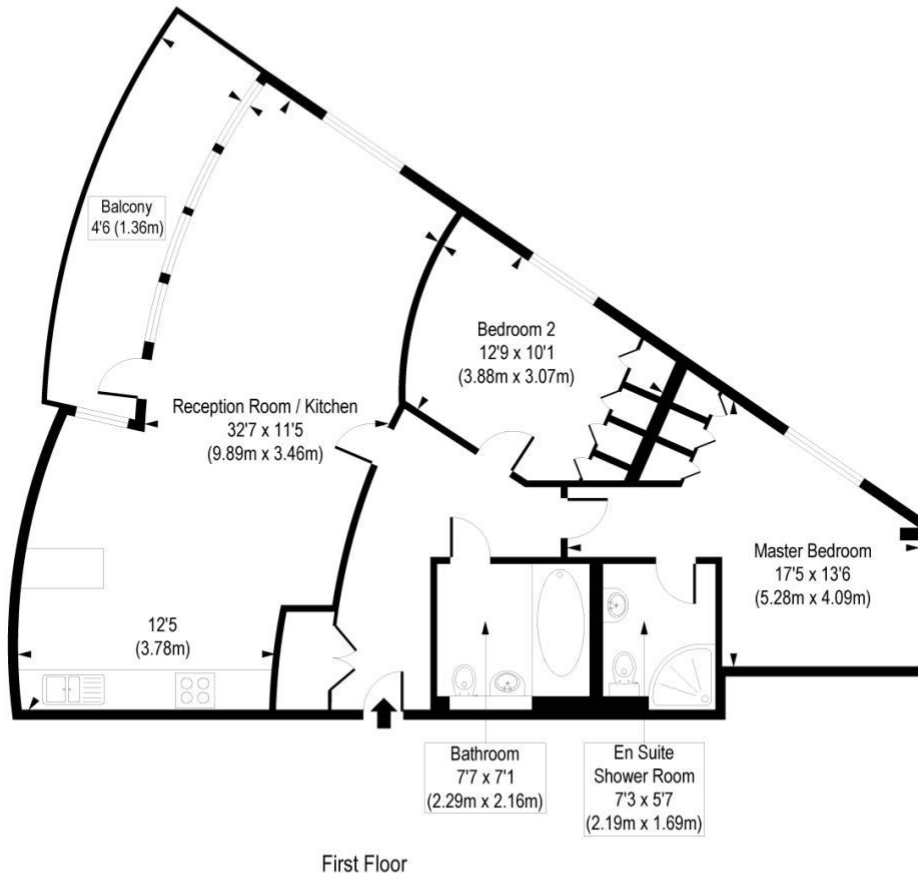
Located moments from a host of amenities on Holloway Road and within easy reach of excellent transport links, this spacious two bedroom flat provides an ideal home for the busy professional or student alike. At over 800 square feet, offering a sociable open plan layout this stunning two bedroom apartment with light, modern interiors is found on the first floor. The property is comprised of a very spacious kitchen/reception/dining room, two double bedroom, a family and ensuite bathrooms. Lanesborough Court offers numerous transport links including many bus links to Angel, the city and the West End, Holloway Road station (Piccadilly Line) and Drayton Park (national rail services to Moorgate). Furnished.

Winkworth



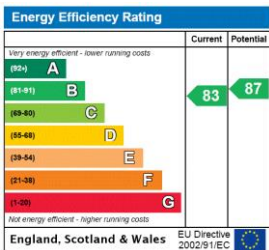
Winkworth

Lanesborough Court, Chilingworth Road, N7
 Approx. Gross Internal Area 849 sq. ft / 78.86 sq. m



COMPLIANT WITH RICS CODE OF MEASURING PRACTICE Floorplan is for illustrative purposes only and is not to scale. Every attempt has been made to ensure the accuracy of the floorplan shows, however all measurements, fixtures, fittings and data shown are an approximate interpretation for illustrative purposes only. Liability for errors, omissions or mis-statement through negligence or otherwise is hereby excluded.

This floorplan is for illustration purposes only and is not to scale. The position and size of doors, windows, appliances and other features are approximate.



Islington | 0207 354 2480 | islington@winkworth.co.uk



winkworth.co.uk

See things differently

Winkworth wishes to inform prospective buyers and tenants that these particulars are a guide and act as information only. All our details are given in good faith and believed to be correct at the time of printing but they don't form part of an offer or contract. No Winkworth employee has authority to make or give any representation or warranty in relation to this property. All fixtures and fittings, whether fitted or not are deemed removable by the vendor unless stated otherwise and room sizes are measured between internal wall surfaces, including furnishings.