



Redcliffe Gardens, West Chelsea, London, SW10

£807.69 per week* / £3,500 per month – Unfurnished

A well-presented two bedroom raised-ground floor flat with excellent proportions throughout.

2 Bedrooms | 1 Reception Room | 2 Bathrooms | Raised Ground Floor Flat | Period | 1,056 Approx sq ft | EPC: D

APPLICANT FEES MAY BE APPLICABLE
HOLDING DEPOSIT OF 1 WEEK'S RENT
SECURITY DEPOSIT OF 5 WEEKS' RENT

Winkworth



DESCRIPTION

Situated on the preferred Bolton Conservation area side of Redcliffe Gardens, this spacious property benefits from a grand 368 sq ft west-facing reception room with many original features, a separate modern kitchen with breakfast bar, and to the rear, a large master bedroom with en-suite and ample built-in storage and a further bedroom & bathroom.

Situated moments from the shops, bars and restaurants of both the Fulham Road & Hollywood Road, this property is perfectly positioned to enjoy the lively atmosphere of SW10. Earl's Court tube station is 10 minutes' walk, and there are frequent buses moments away. The flat is available from end of August on an unfurnished basis.



ACCOMMODATION

2 Bedrooms, 1 Reception Room, 2 Bathrooms,
Raised Ground Floor Flat, Period, Unfurnished,
1,056 Approx Sq ft

COUNCIL TAX BAND

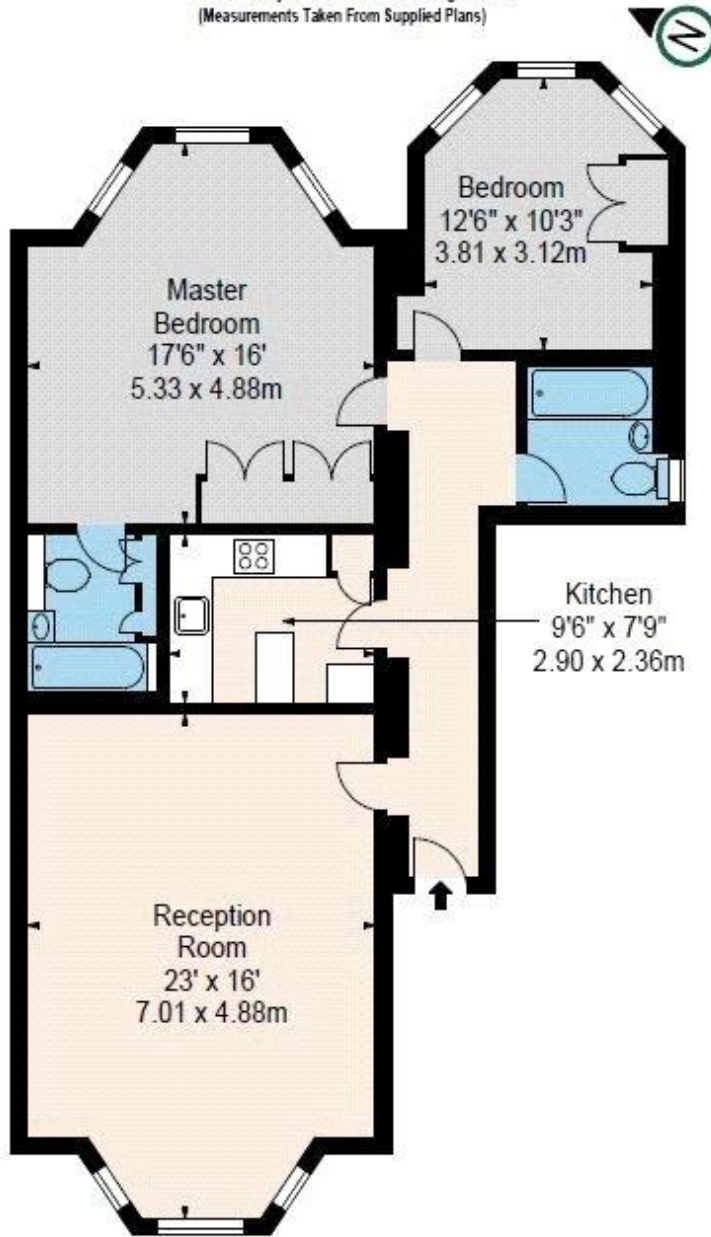
Band F



REDCLIFFE GARDENS

Approx. Gross Internal Area*
1056 Ft² - 98.10 M²

Illustration For Identification Only, Not to Scale
All Calculations include Any/All Areas Under 1.5m Head Height.
* As Defined by RICS - Code of Measuring Practice
(Measurements Taken From Supplied Plans)



RAISED GROUND FLOOR



www.bkrfloorplans.co.uk
T: 0845 257 2023
© BKR 2017

Energy Efficiency Rating		
	Current	Potential
Very energy efficient - lower running costs		
(92+) A		
(81-91) B		
(69-80) C		
(55-68) D	66	75
(39-54) E		
(21-38) F		
(1-20) G		
Not energy efficient - higher running costs		
England, Scotland & Wales	EU Directive 2002/91/EC	

This floorplan is for illustration purposes only and is not to scale. The position and size of doors, windows, appliances and other features are approximate.

Photos as previously furnished.

*Please note, rent cannot be paid on a weekly basis.

South Kensington Lettings | 020 7370 6767 | lettings.southken@winkworth.co.uk

winkworth.co.uk



for every step...

Winkworth wishes to inform prospective buyers and tenants that these particulars are a guide and act as information only. All our details are given in good faith and believed to be correct at the time of printing but they don't form part of an offer or contract. No Winkworth employee has authority to make or give any representation or warranty in relation to this property. All fixtures and fittings, whether fitted or not are deemed removable by the vendor unless stated otherwise and room sizes are measured between internal wall surfaces, including furnishings.