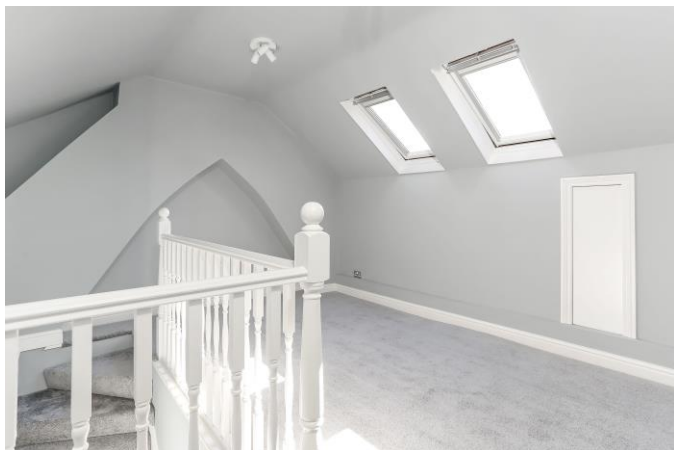




Hyde Abbey Road, SO23 7DA

Winkworth

Hyde Abbey Road, SO23 7DA



Period Apartment in the Heart of the City

This well presented, centrally positioned apartment forms the first and second floors of this period property in Hyde. The location is wonderful, with excellent access in and out of the city, very good local schools close by and just a short distance to the railway station for commuters.

A covered porch leads through to a communal hall (accessing only the one other apartment on the ground floor), with a private door leading upstairs to the apartment itself. On entering the apartment, the light-filled landing leads first to a good-sized bedroom to the rear, with the principal bedroom situated to the front of the apartment. The kitchen has ample base and eye level units with space for appliances. Alongside is the smart, fully tiled bathroom with bath and shower over.

Stairs rise to the first floor where there is a spacious sitting room which is a lovely light room courtesy of large Velux windows and benefits from plenty of eaves storage.

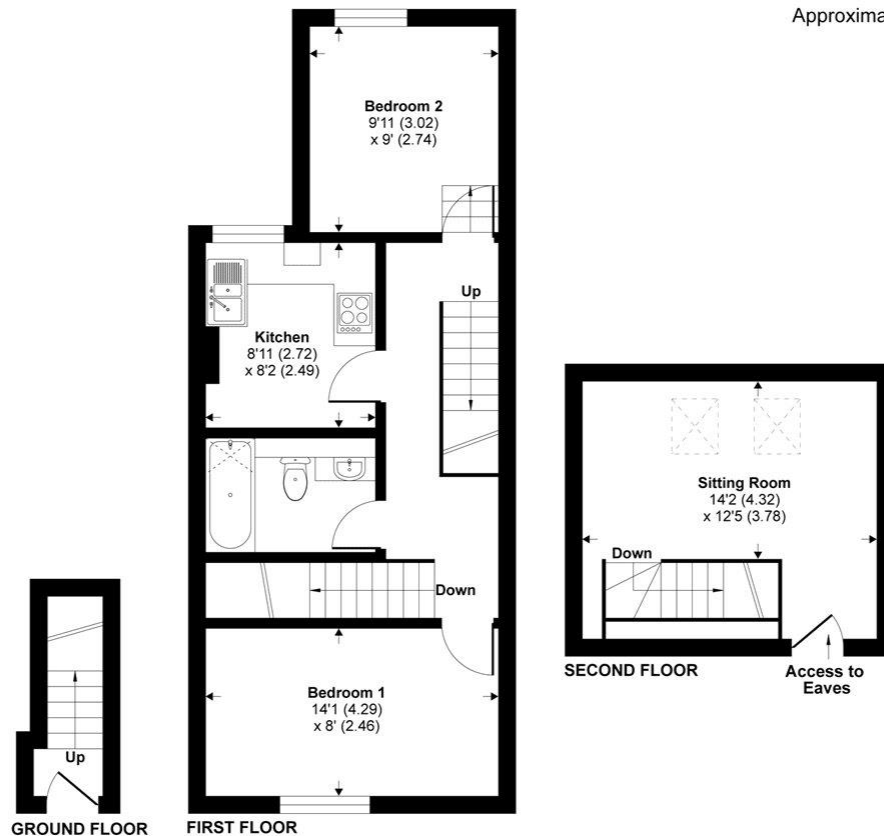
Permit parking is available on the road.





Hyde Abbey Road, Winchester, SO23

Approximate Area = 645 sq ft / 60 sq m
For identification only - Not to scale



Floor plan produced in accordance with RICS Property Measurement Standards incorporating International Property Measurement Standards (IPMS2 Residential). © n3checom 2020. Produced for Winkworth. REF: 617428

Hyde Abbey Road, SO23 7DA

Directions

From our offices at 72 High Street turn left into Trafalgar Street, left into St Clement Street and left again into Southgate Street. At the traffic lights turn right and follow the road round to the left onto Jewry Street. At the second set of lights use the right-hand lane to turn right onto North Walls. At the lights turn left into Hyde Abbey Road. The property is situated on your right.

Location

Hyde Abbey Road is situated in the sought-after area of Hyde and is superbly positioned 400 metres from the mainline railway station (links to London Waterloo in approximately 60 minutes), and 400 metres from the city centre with its high street shops, boutiques, library, coffee shops, public houses, restaurants, theatre, cinema, museums and, of course, the city's historic cathedral. The property is situated in the catchment for good local schools, namely St Bede Primary School and The Westgate All Through School and is just 100 metres from River Park Recreation Ground where there are playing fields, tennis courts, an astroturf football pitch, indoor and outdoor bowls club, skate park and children's playground.

Tenure: Freehold

Services

Mains gas, electricity, water and drainage

Winchester City Council

Council tax band: B

EPC rating: C

Viewings

Strictly by appointment with Winkworth Winchester Office

Winkworth.co.uk/winchester

Winkworth Winchester

2 Black Swan Buildings, Southgate Street, Winchester, SO23 9DT
01962 866 777 | winchester@winkworth.co.uk

Winkworth Country House Department

13 Charles II Street, St James's, London, SW1Y 4QU
020 7870 4878 | countryhouse@winkworth.co.uk

Winkworth

See things differently