



TOOTING HIGH STREET, SW17
£575,000 LEASEHOLD

A SUPERB THREE BED, THREE BATH MODERN APARTMENT IN TOOTING BROADWAY

Tooting | 020 8767 5221 | tooting@winkworth.co.uk

Winkworth

for every step...

winkworth.co.uk



DESCRIPTION:

This beautifully presented recently redecorated three-bedroom, three-bathroom apartment occupies the top floors of a charming period conversion.

The property features a bright and spacious open-plan living and dining area, complemented by a contemporary kitchen with ample storage and integrated appliances. Each of the three well-proportioned bedrooms benefits from its own bathroom, including two stylish en-suite shower rooms and a sleek family bathroom with a luxurious double-ended bath. Additional highlights include modern neutral décor, excellent storage throughout, and elegant wood flooring in the reception area.

Tooting High Street is centrally located in the vibrant heart of Tooting. The area offers an array of amenities, including diverse restaurants, independent cafes, and boutique shops, alongside larger retailers and a well-stocked supermarket. Known for its bustling atmosphere, Tooting is also home to the popular Tooting Market and Broadway Market, offering a mix of street food, artisanal goods, and fresh produce.

Tooting Broadway Underground Station (0.3miles) (Northern Line) is nearby, providing excellent transport links to central London and beyond. The area is also well-served by bus routes and boasts a strong sense of community, with parks and green spaces like Tooting Bec Common within easy reach.

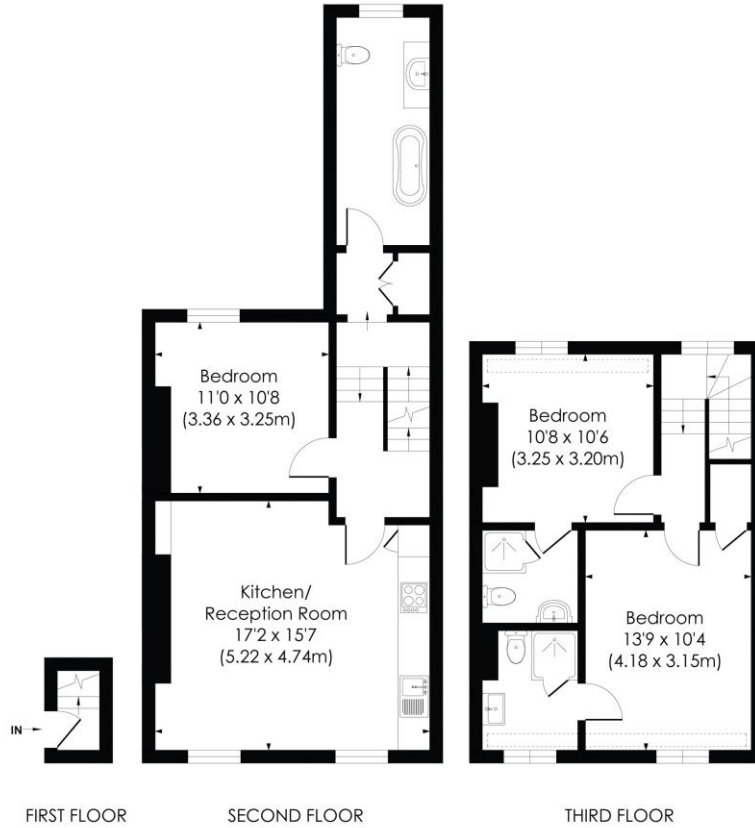
Wandsworth Council Tax Band: C



TOOTING HIGH STREET, SW17

Approx. Gross Internal Floor Area

1018 Sq. ft/94.57 Sq. m

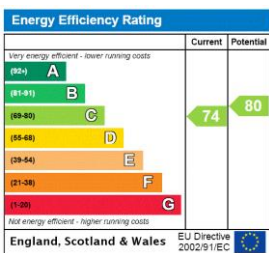


pixangle
PROPERTY MARKETING

© Pixangle Property Marketing Ltd. info@pixangle.com Tel: 0208 870 2118

This floor plan has been prepared for the purpose of illustration only in accordance with the latest RICS code of measuring practice and is not to scale. All measurements and areas are approximate and whilst every effort has been made to ensure the accuracy of the plan contained here, no responsibility is taken for any error, omission or misstatement.

This floorplan is for illustration purposes only and is not to scale. The position and size of doors, windows, appliances and other features are approximate.



Tooting | 020 8767 5221 | tooting@winkworth.co.uk

for every step...

winkworth.co.uk

Winkworth wishes to inform prospective buyers and tenants that these particulars are a guide and act as information only. All our details are given in good faith and believed to be correct at the time of printing but they don't form part of an offer or contract. No Winkworth employee has authority to make or give any representation or warranty in relation to this property. All fixtures and fittings, whether fitted or not are deemed removable by the vendor unless stated otherwise and room sizes are measured between internal wall surfaces, including furnishings.