



## Perryn House, Bromyard Avenue, W3

£550,000 Share of Freehold

A three double bedroom flat on the ground floor of this gated development with parking, plus access to communal gardens.

Reception Room | Kitchen | 3 Bedrooms | Bathroom | Patio | 935 Sq Ft / 87 Sq M | Council Tax Band E | EPC Rating Band D

**Winkworth**



## LOCATION

Perryn House is a gated development on Bromyard Avenue, where local amenities include two health and fitness clubs (David Lloyd and Mode Club), a large Tesco Metro, Lidl on Western Avenue, as well as a variety of pubs and restaurants. The closest stations are East Acton, Acton Central and Acton Mainline, with numerous bus routes from The Vale.

## DESCRIPTION

The property offers well proportioned accommodation which comprises entrance hall, reception room, kitchen, bathroom and three double bedrooms. The flat further benefits from a private patio and access to extensive communal gardens. The flat further benefits from two parking spaces and a lock up storage unit.

Lease: 999 years from 17 September 2001  
Service Charge:- £4220 p.a. (paid monthly)  
Ground Rent:- Not Applicable





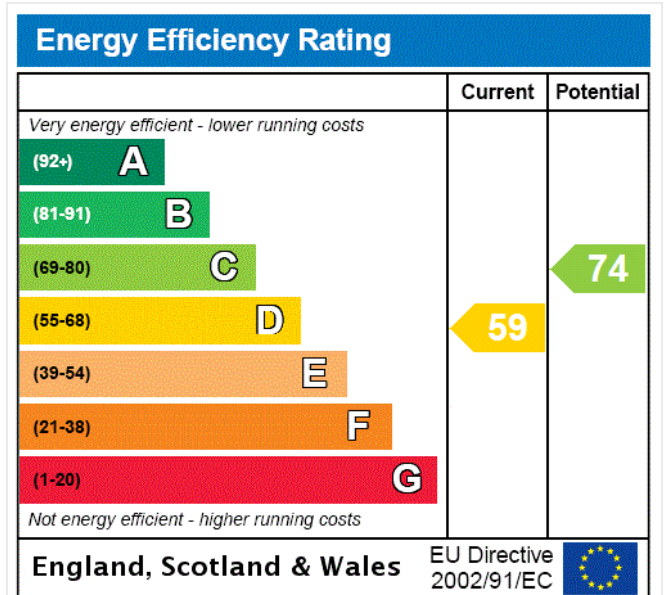
**LOCAL AUTHORITY**

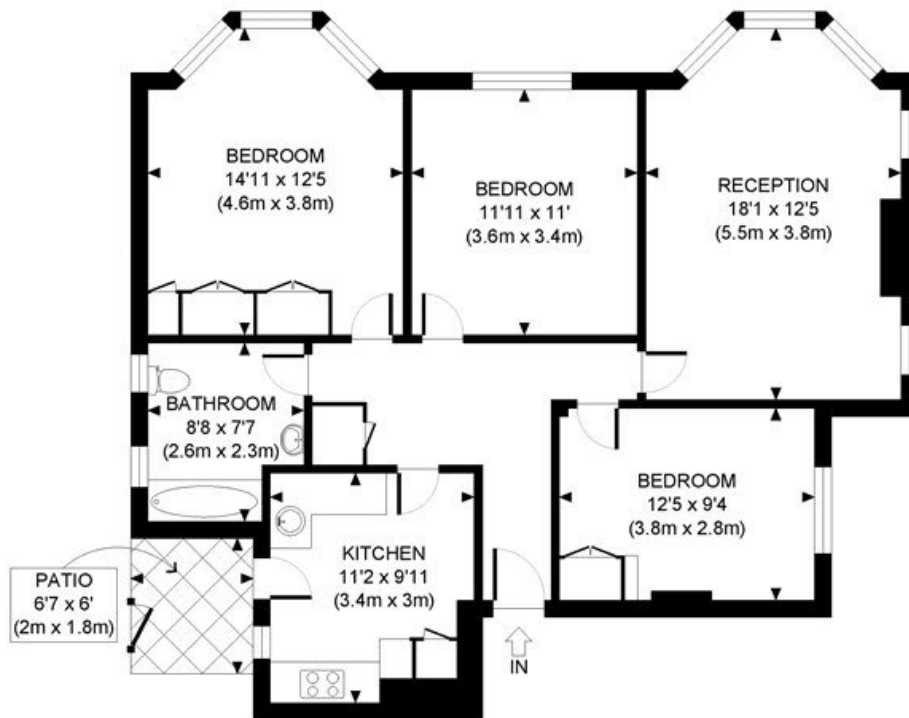
Ealing Council

**TENURE**

Share of Freehold 975 years 7 months.

**PRICE: £550,000 Share of Freehold**





GROUND FLOOR  
GROSS INTERNAL  
FLOOR AREA 935 SQ FT



APPROX. GROSS INTERNAL FLOOR AREA: 935 SQ FT/ 87 SQM

**Winkworth**

This plan is for illustrative purposes only and should be used as such by any prospective client. Whilst every attempt has been made to ensure the accuracy of the Floor Plan contained here, measurements of the doors, windows, rooms and any other items are approximate and no responsibility is taken for any errors, omissions, or misstatement. The services, systems and appliances shown have not been tested and no guarantee as to the operability or efficiency can be given.

**PROPERTY PHOTO PLANS**  
THE TOP END OF PROPERTY SOLUTIONS

The displayed square footage is taken from the floor plans with measurements created using the Royal Institute of Chartered Surveyors' Code of Practice for Measuring. These measurements are approximate and included for illustrative purposes only. Winkworth does not make any representation as to the accuracy of these measurements and you should seek to verify them for yourself. Winkworth accept no liability for any loss you may suffer if you rely on these measurements.

Shepherds Bush | 020 8735 3266 | [shepherdsbush@winkworth.co.uk](mailto:shepherdsbush@winkworth.co.uk)

**Winkworth**

for every step...

Under the Property Misdescriptions Act 1991, these Particulars are a guide and act as information only. All details are given in good faith and are believed to be correct at time of printing. Winkworth give no representation as to their accuracy and potential purchasers or tenants must satisfy themselves by inspection or otherwise as to their correctness. No employee of Winkworth has authority to make or give any representation or warranty in relation to this property.