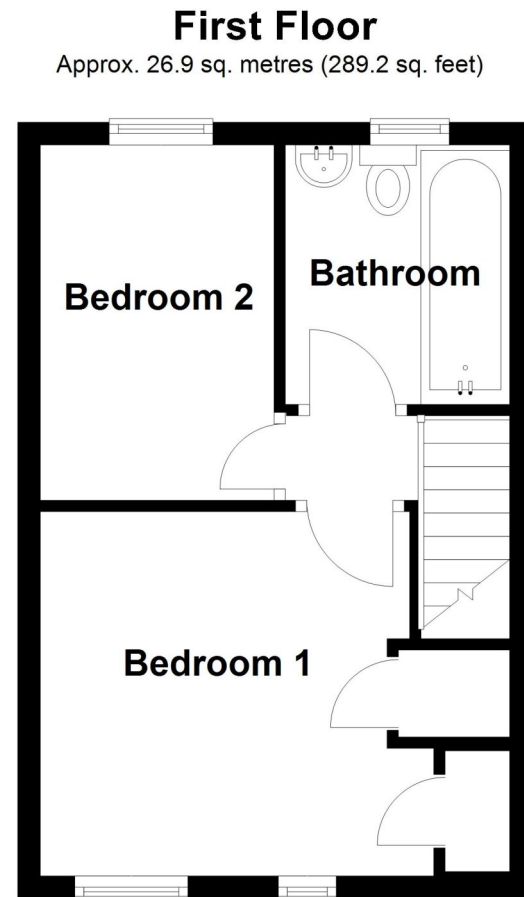
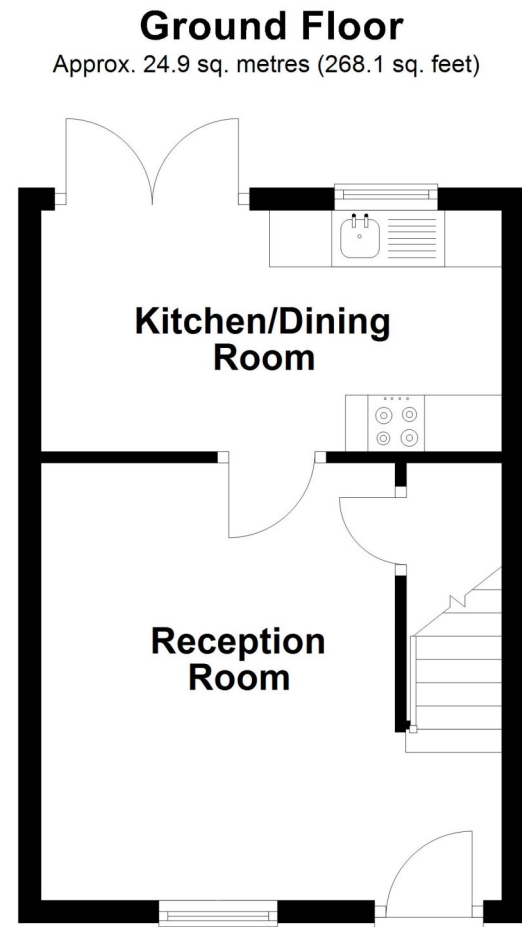
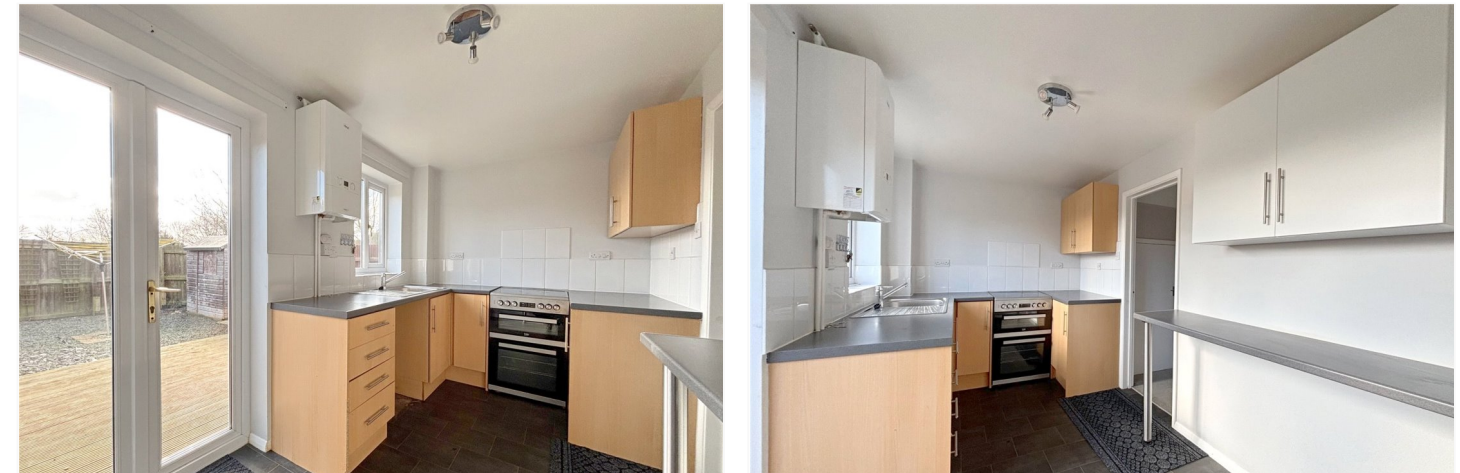


Dawson Road, Sleaford, Lincolnshire

This floorplan is for illustration purposes only and is not to scale. The position and size of doors, windows, appliances and other features are approximate.



Total area: approx. 51.8 sq. metres (557.3 sq. feet)



19 Dawson Road, Sleaford, Lincolnshire, NG34

£159,950 Freehold

NO CHAIN | TWO BEDROOM SEMI DETACHED HOME | MODERN FLOORING & DECOR | KITCHEN/DINER | PARKING FOR THREE CARS | OVERLOOKS PARK TO THE REAR | UPVC DOUBLE GLAZING | GAS CENTRAL HEATING | VIEWING IS ESSENTIAL

Energy Efficiency Rating		Current	Potential
Very energy efficient - lower running costs			
(92+)	A		89
(81-91)	B		
(69-80)	C		
(55-68)	D	60	
(39-54)	E		
(21-38)	F		
(1-20)	G		
Not energy efficient - higher running costs			
England, Scotland & Wales		EU Directive 2002/91/EC	



ACCOMMODATION

Lounge - 13'2" x 12'9" (4.01m x 3.89m)

Kitchen/Dining Room - 13'4" x 7' (4.06m x 2.13m)

Bedroom 1 - 10'5" x 9'9" (3.18m x 2.97m)

Bedroom 2 - 10'4" x 6'9" (3.15m x 2.06m)

Bathroom - 7'4" x 6'5" (2.24m x 1.96m)

DESCRIPTION

NO CHAIN This Two Bedroom Semi-Detached Home is offered for sale with the benefit of no onward chain. The property boasts a modern decor and flooring and a lovely rear garden with decking area. To the front and side of the property is a gravel driveway offering off street parking for up to three cars.

The accommodation comprises of Lounge, Kitchen/Diner, Two Bedrooms and a Bathroom.

The property also boasts Gas Central Heating and UPVC Double Glazing.

A viewing is highly advised and would make an ideal purchase for first time buyers and investors alike.

