



Desdemona Avenue, Heathcote
£240,000

Winkworth

for every step...





About the Property

Desdemona Avenue is a contemporary, two bedroom, terraced home in the heart of sought after Heathcote, a short drive from the centre of Leamington Spa (2.8 miles).

Having been wonderfully maintained by the current owners, this charming family home offers flexible living over two floors with accommodation extending to approximately 614 sq ft.

Council Tax: Band C
Local Authority: Warwick District Council
Broadband: Ultrafast Broadband Available
(Checked on Ofcom Feb 2025)
Mobile Coverage: Likely/Limited Coverage
Heating: Gas Central Heating
Listed: No
Tenure: Freehold



The Finer Details

Upon arriving at Desdemona Avenue, a spacious, central entrance hall leads you through to the sitting/dining room to the rear of the property. A set of large French doors provide an abundance of natural light as well as views over the rear garden.

The kitchen is accessed off the central hallway, and has a range of integrated appliances including gas hobs, oven and farmhouse sink as well as plenty of counter-top and cupboard space. There is a large cloakroom/WC and under stairs cupboard both accessed via the central hallway.

The first floor has a generous landing and provides access to the two bedrooms and family bathroom. The master bedroom is a spacious double, and has triple built in wardrobes as well as a further storage cupboard over the stairs, the front aspect windows ensure a bright and inviting atmosphere. There is further attic storage which can be accessed via a ladder on the landing.

Externally, the garden is accessed through French doors off the reception room and it is a real sun trap. A patio leads onto a pebbled area which is flanked by small trees and shrubs. There is an external rear gate, and allocated off street parking for two cars.









About the Area

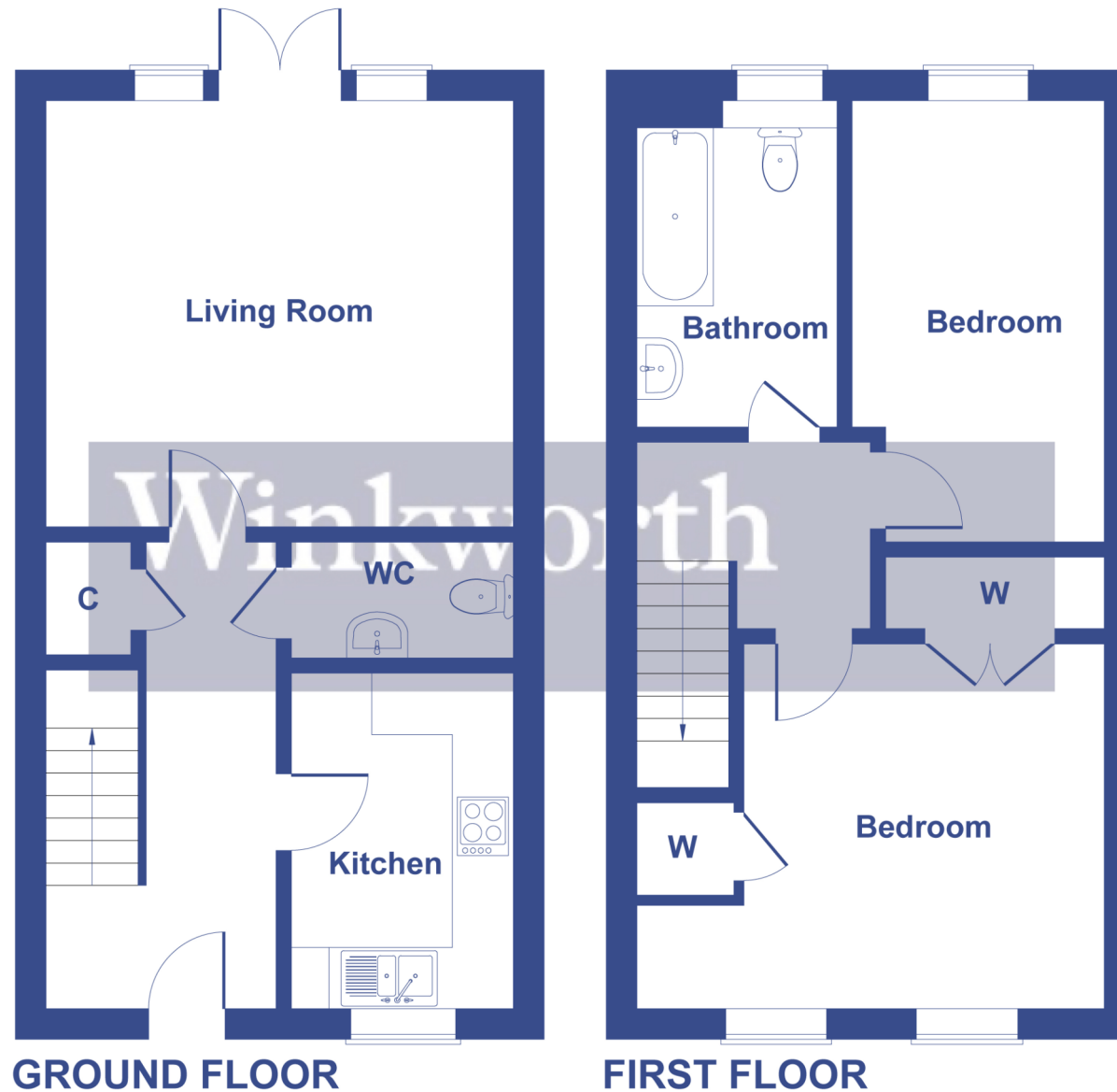
Desdemona Avenue is conveniently set in the heart of sought after Heathcote, within close proximity of the shops, restaurants and schools in nearby Warwick (2.3 miles) and Leamington Spa (2.8 miles).

There are a number of popular state and private, primary and secondary schools within a short drive of Desdemona Avenue, with Heathcote Primary School (0.5 miles) and Oakley School (1 mile) within walking distance, and Myton School (2.2 miles) and Warwick School (1.9 miles) a short drive away.

Leamington Train Station (1.8 miles) and Warwick Parkway (3.8 miles) both provide direct services to London Marylebone (1 hour 23 minutes) and Birmingham Train terminals (33 minutes). The motorway network is accessed via multiple junctions of the M40 and provides good access to London and the wider west Midlands.



51 Desdemona Avenue, CV34 6FX



Not to Scale. Produced by The Plan Portal 2025
For Illustrative Purposes Only.





Winkworth

019 2695 6560



Winkworth Leamington Spa
01926 956560

19 Denby Buildings, Regent Grove, Royal Leamington Spa, Warwickshire, CV32 4NY
leamingtonspa@winkworth.co.uk

Winkworth

for every step...