



MILLBANK, SW1P

£995,000

LEASEHOLD

At a glance...

- One Bedroom
- c.680 sq ft
- Balcony with River View
- Concierge, Gym & Parking
- High Spec
- Council Tax Band: F

Winkworth

for every step...



Energy Efficiency Rating		
	Current	Potential
Very energy efficient - lower running costs (92+)		
A		
(81-91)	86	86
B		
(69-80)		
C		
(55-68)		
D		
(39-54)		
E		
(21-38)		
F		
(1-20)		
G		
Not energy efficient - higher running costs		
England, Scotland & Wales	EU Directive 2002/91/EC	

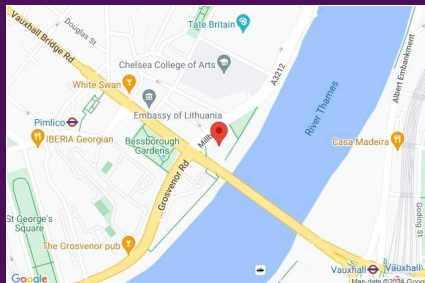
MILLBANK, SW1P

£995,000

LEASEHOLD

A very impressive flat on the 3rd floor of this smart modern riverside development. Offering around 680 sq ft this is a truly luxurious one bedroom apartment offering a great balcony, large enough for a table and 4 chairs, with excellent river views. Briefly the accommodation comprises a large reception room and kitchen featuring Miele appliances, a double bedroom with storage, a beautiful marble finished bathroom, a separate guest cloakroom and further utility room.

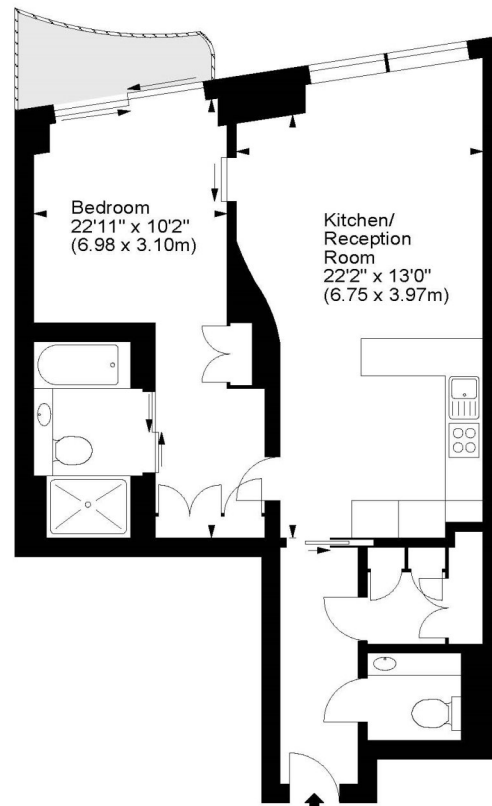
Riverwalk is a much sought-after development which in addition to a great gym offers its residents hotel levels of service and security including delivery services to your apartment, valet parking in the secure underground car park (with electric charging points) as well as 24h concierge.



winkworth wishes to inform prospective buyers and tenants that these particulars are a guide and act as information only. All our details are given in good faith and believed to be correct at the time of printing but they don't form part of an offer or contract. No winkworth employee has authority to make or give any representation or warranty in relation to this property. All fixtures and fittings, whether fitted or not are deemed removable by the vendor unless stated otherwise and room sizes are measured between internal wall surfaces - including fire-chimneys.

Riverwalk, Millbank, SW1

Approx. Gross Internal Area
680 Sq Ft - 63.17 Sq M



Third Floor

For illustration purposes only. Not to scale.
All measurements are taken and shown at floor level.
www.r3photography.co.uk © Photography / Floor Plans / Lease Plans / EPCs

Pimlico & Westminster

020 7828 1786

pimlico@winkworth.co.uk

winkworth.co.uk/pimlico-westminster

Winkworth

for every step...