



MEADOWBANK ROAD, KINGSBURY, LONDON, NW9
£675,000 FREEHOLD

THREE BEDROOM END OF TERRACE HOUSE WITH GREAT SCOPE FOR DEVELOPMENT

Kingsbury | 020 8204 0000 | kingsbury@winkworth.co.uk

Winkworth

for every step...

winkworth.co.uk



Welcome to this charming end of terrace three-bedroom house, offering immense scope for extension and development, the perfect setting for those looking to create their dream home. Stepping in, you'll be greeted by a spacious through lounge, ideal for relaxing and entertaining alike. The well-appointed kitchen/diner area provides an inviting space for family meals and gatherings. A ground floor shower room adds to the convenience, whilst on the upper level two generous double bedrooms, and a cozy single bedroom are all complemented by a family bathroom. Externally, you'll find a lengthy rear garden, perfect for outdoor activities. The property also boasts a garage, gated off-street parking, and ample outdoor space to the rear. Nestled in a peaceful yet accessible location, this property is close to shops, amenities, schools, and transport links, making it an ideal choice for families. With its endless potential for expansion (STPP), this home can grow and evolve with your family, truly becoming your forever residence. An internal viewing is essential to fully appreciate the potential and charm this house has to offer. Don't miss the opportunity to make this property your own.



Winkworth

for every step...

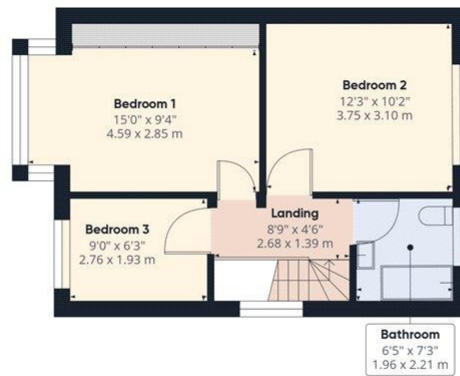


Winkworth

for every step...



Ground Floor



Floor 1

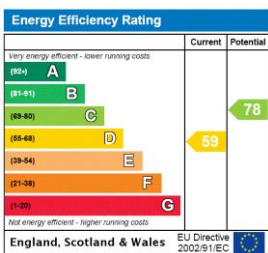
Approximate total area^m
1133.2 ft²
105.28 m²

(1) Excluding balconies and terraces

While every attempt has been made to ensure accuracy, all measurements are approximate, not to scale. This floor plan is for illustrative purposes only.

GIRAFFE360

This floorplan is for illustration purposes only and is not to scale. The position and size of doors, windows, appliances and other features are approximate.



Tenure: Freehold

Council Tax Band: E

Where no figures are shown, we have been unable to ascertain the information. All figures that are shown were correct at the time of printing.

Kingsbury | 020 8204 0000 | kingsbury@winkworth.co.uk

Winkworth

for every step...

winkworth.co.uk

Winkworth wishes to inform prospective buyers and tenants that these particulars are a guide and act as information only. All our details are given in good faith and believed to be correct at the time of printing but they don't form part of an offer or contract. No Winkworth employee has authority to make or give any representation or warranty in relation to this property. All fixtures and fittings, whether fitted or not are deemed removable by the vendor unless stated otherwise and room sizes are measured between internal wall surfaces, including furnishings.