



CATALINA HOUSE, CANTER WAY, LONDON, E1  
**£600,000 LEASEHOLD**

**A MODERN ONE-BEDROOM APARTMENT SITUATED  
ON THE SECOND FLOOR OF CATALINA HOUSE IN  
THE LUXURY GOODMANS FIELDS DEVELOPMENT.**

**Winkworth**

Shoreditch | 020 7749 7650 | [shoreditch@winkworth.co.uk](mailto:shoreditch@winkworth.co.uk)

[winkworth.co.uk](http://winkworth.co.uk)

See things differently





## DESCRIPTION:

A modern one-bedroom apartment situated on the second floor of Catalina House in the luxury Goodmans Fields development.

This spacious apartment boasts approx 553 sq.ft. of living space and offers an open plan living room opening out to a balcony with views of the fountains on the main square, fully fitted kitchen, generously sized double bedroom with fitted wardrobes, three-piece bathroom and a separate large utility cupboard that hosts storage space, a washing machine, Vent-Axia air purification system and community heat exchange unit.

Catalina House is part of the Goodman's Fields development which is a mixed-use urban quarter providing a selection of beautiful apartments as well as independent coffee shops, cafes and restaurants, cinema, a hotel, 2 acres of stunning landscaping and unforgettable public art. The property is conveniently located just 0.2 miles from Aldgate East station and 0.6 miles to Fenchurch Street station. There is also a new GP surgery onsite, and access to several supermarkets nearby.

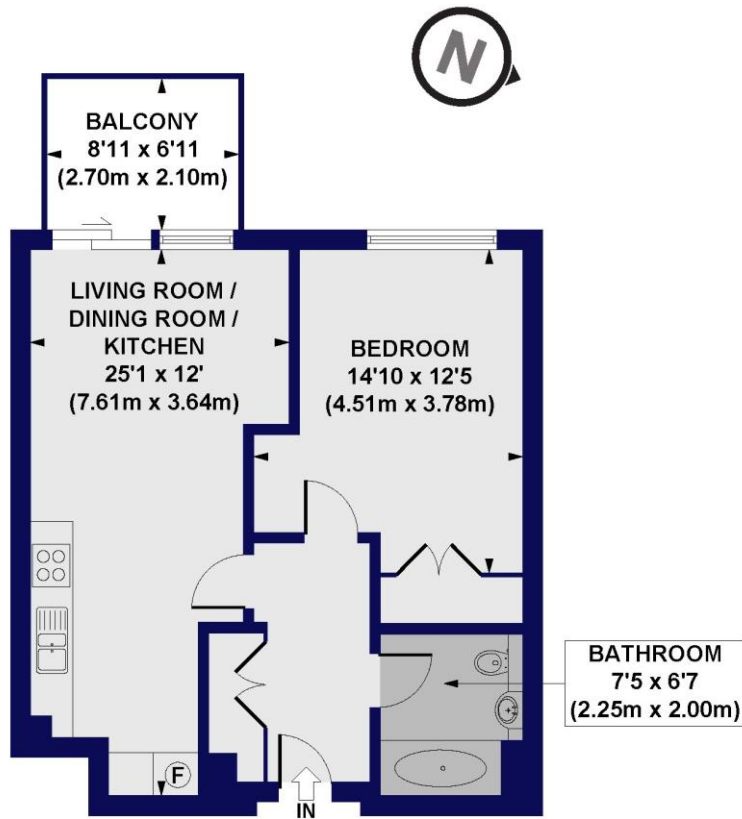
**Winkworth**



**Winkworth**



**Catalina House, Canter Way, E1**  
**Approx. Gross Internal Floor Area 553 sq. ft / 51.33 sq. m**



**SECOND FLOOR**

All measurements of walls, doors, windows, fittings and appliances, including their size and location, are shown as standard sizes and do not constitute any warranty or representation by the seller, their agent or CP Creative. Any intending purchaser must satisfy himself by inspection or otherwise as to the correctness of the information contained in these plans. This plan is for illustrative purposes only and should be used as such by any prospective purchasers.

**Winkworth**

This floorplan is for illustration purposes only and is not to scale. The position and size of doors, windows, appliances and other features are approximate.

Energy Efficiency Rating		Current	Potential
Very energy efficient - lower running costs			
(92-100) <b>A</b>			
(81-91) <b>B</b>		86	86
(69-80) <b>C</b>			
(55-68) <b>D</b>			
(39-54) <b>E</b>			
(21-38) <b>F</b>			
(1-20) <b>G</b>			
Not energy efficient - higher running costs			
England, Scotland & Wales	EU Directive 2002/91/EC		

Shoreditch | 020 7749 7650 | shoreditch@winkworth.co.uk



winkworth.co.uk

See things differently

Winkworth wishes to inform prospective buyers and tenants that these particulars are a guide and act as information only. All our details are given in good faith and believed to be correct at the time of printing but they don't form part of an offer or contract. No Winkworth employee has authority to make or give any representation or warranty in relation to this property. All fixtures and fittings, whether fitted or not are deemed removable by the vendor unless stated otherwise and room sizes are measured between internal wall surfaces, including furnishings.