



JOHN NETTLEFOLD HOUSE, BETHNAL GREEN ROAD, LONDON, E2
£1,650 PER MONTH PART FURNISHED, UNFURNISHED

THIS EXCEPTIONAL ONE-BEDROOM APARTMENT BOASTS A SPACIOUS OPEN-PLAN LAYOUT, CONTEMPORARY FINISHES, AND AN IMPRESSIVE PRIVATE TERRACE—PERFECT FOR ENTERTAINING OR UNWINDING IN THE HEART OF EAST LONDON.

Shoreditch | 020 7749 7650 | shoreditch@winkworth.co.uk

Winkworth

Tenant Fees Apply: Details of fees for tenant referencing, tenancy agreement admin fees and renewal fees are available on the Winkworth website and the link can be found with the displayed rent for the property. Tenants should ensure they are fully conversant with these upfront fees and other costs that are involved at the outset of the tenancy before making an offer to rent and your local Winkworth office will provide written details upon request.

winkworth.co.uk

See things differently



DESCRIPTION:

This exceptional one-bedroom apartment boasts a spacious open-plan layout, contemporary finishes, and an impressive private terrace—perfect for entertaining or unwinding in the heart of East London.

The property features a generously sized living area with an open-plan kitchen, providing a functional space for cooking and socializing. The large double bedroom has ample storage plus there is a walk in wardrobe just off the entrance hall. A luxury bathroom completes the home, offering a stylish and relaxing retreat.

Located on Bethnal Green Road, this apartment benefits from an unbeatable setting, placing you just moments from Shoreditch, Brick Lane, and Spitalfields. From boutique shopping to vibrant nightlife and world-class dining, everything you need is within easy reach. Transport links are excellent, with Bethnal Green Underground (Central Line) and Shoreditch High Street Overground providing seamless connections to the City and beyond.

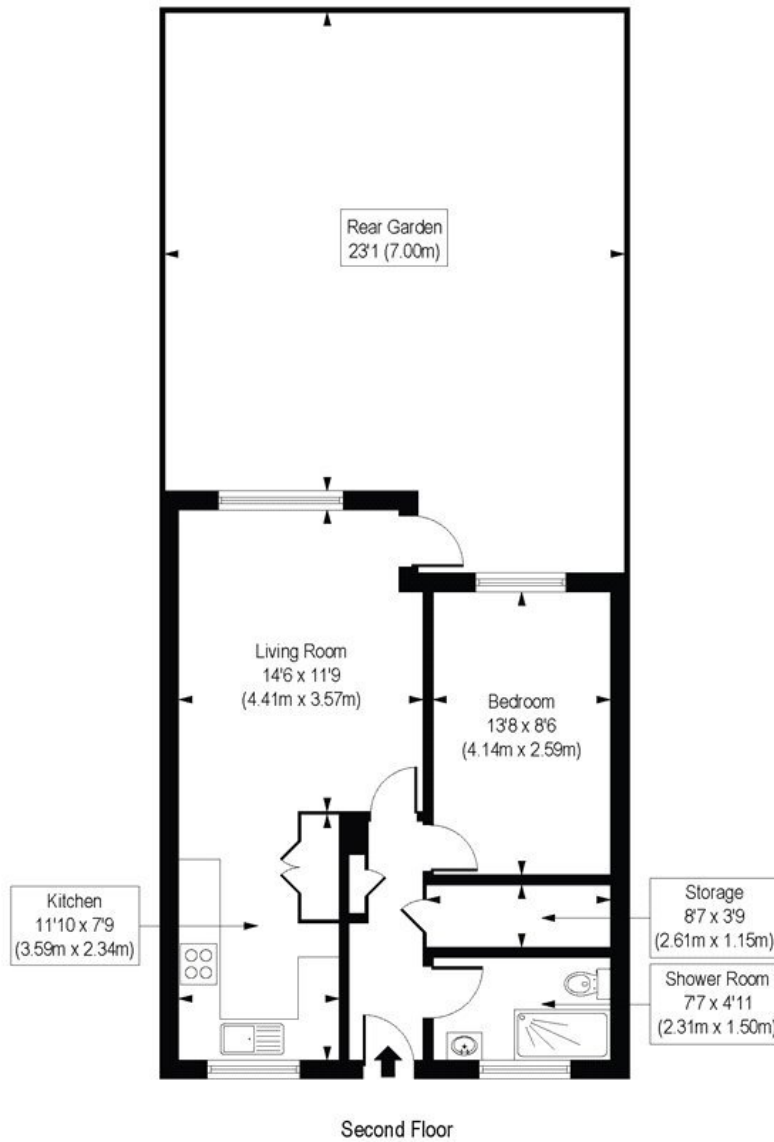
Food lovers will appreciate the incredible variety of restaurants, cafés, and street food options nearby, from the flavours of Bangladeshi, Vietnamese, and Middle Eastern cuisine to local favorites like The Old George and The Star of Bethnal Green. Markets such as Columbia Road Flower Market, Spitalfields, and

Winkworth



Winkworth

John Nettlefold House, Bethnal Green Road, E2
Approx. Gross Internal Floor Area 507 sq. ft / 47.09 sq. m



COMPLIANT WITH RICS CODE OF MEASURING PRACTICE. Floorplan is for illustrative purposes only and is not to scale. Every attempt has been made to ensure the accuracy of the floorplan shown, however all measurements, fixtures, fittings and data shown are an approximate interpretation for illustrative purposes only. Liability for errors, omissions or mis-statement through negligence or otherwise is hereby excluded.

This floorplan is for illustration purposes only and is not to scale. The position and size of doors, windows, appliances and other features are approximate.

Shoreditch | 020 7749 7650 | shoreditch@winkworth.co.uk

Winkworth

winkworth.co.uk

See things differently

Winkworth wishes to inform prospective buyers and tenants that these particulars are a guide and act as information only. All our details are given in good faith and believed to be correct at the time of printing but they don't form part of an offer or contract. No Winkworth employee has authority to make or give any representation or warranty in relation to this property. All fixtures and fittings, whether fitted or not are deemed removable by the vendor unless stated otherwise and room sizes are measured between internal wall surfaces, including furnishings.