



BRONDESBURY PARK, NW2
£2,300 PER MONTH FURNISHED

THIS SUBSTANTIAL FIRST FLOOR, TWO DOUBLE BEDROOM APARTMENT WITH GARDEN

Kensal Rise & Queens Park | 0208 960 4947 | kensalrise@winkworth.co.uk

Winkworth

for every step...

winkworth.co.uk



DESCRIPTION:

Situated on leafy Brondesbury Park this well-proportioned apartment offers spacious living and would make an ideal home. The property currently occupies a vast 120ft (approx.) rear communal lawn garden shared with the downstairs neighbours. Presented in good condition already however the property will be neutrally re-decorated throughout prior to a new tenant moving in.

Offering two double bedrooms, both with ample storage, a fully tiled bathroom and a large semi open plan kitchen reception room with steps down to the garden.

Additional utility cupboard located opposite the apartment door houses the washing machine and modern boiler.

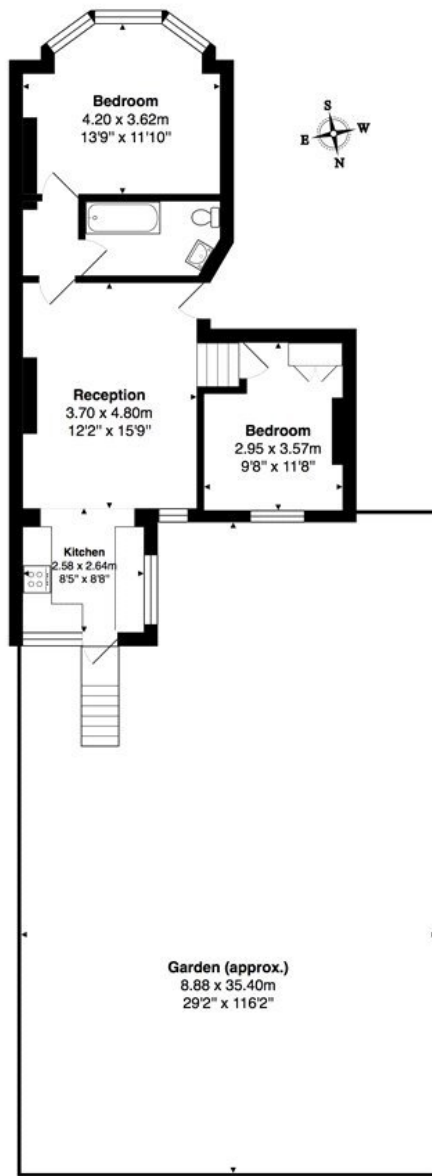
Council tax - Band D

Communal Gardening Included

Fully Furnished

Available asap!





Total Area: 56.9 m² ... 613 ft² (excluding garden (approx.))
All measurements are approximate and for display purposes only

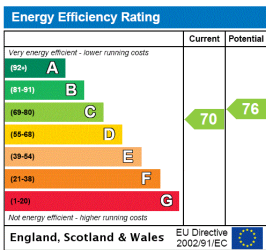
This floorplan is for illustration purposes only and is not to scale. The position and size of doors, windows, appliances and other features are approximate.

Deposit: 5 weeks rent

Holding Deposit: 1 weeks rent

Council Tax Band: D

Where no figures are shown, we have been unable to ascertain the information. All figures that are shown were correct at the time of printing.



Kensal Rise & Queens Park | 0208 960 4947 | kensalrise@winkworth.co.uk



for every step...

winkworth.co.uk

Winkworth wishes to inform prospective buyers and tenants that these particulars are a guide and act as information only. All our details are given in good faith and believed to be correct at the time of printing but they don't form part of an offer or contract. No Winkworth employee has authority to make or give any representation or warranty in relation to this property. All fixtures and fittings, whether fitted or not are deemed removable by the vendor unless stated otherwise and room sizes are measured between internal wall surfaces, including furnishings.