



St Georges Square, SW1V

£3,950 PER MONTH

FURNISHED

AT A GLANCE

- Large living room
- Dining room
- Two double bedrooms
- Two ensembles
- WC
- Storage

Winkworth

for every step...



Energy Efficiency Rating		
	Current	Potential
Very energy efficient - lower running costs		
(92+) A		
(81-91) B		
(69-80) C		80
(55-68) D	67	
(39-54) E		
(21-38) F		
(1-20) G		
Not energy efficient - higher running costs		
England, Scotland & Wales	EU Directive 2002/91/EC	

ST GEORGES SQUARE, SW1V

£3,950 PER MONTH

FURNISHED

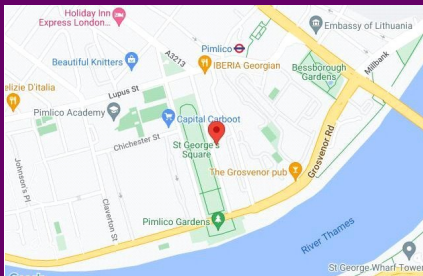
A charming, ground floor, split level flat in the well sought after St George's Square, SW1V.

The ground floor comprises of a large dining area that leads onto a fully equipped kitchen to the rear and a grand living room to the front with a gorgeous bay window that overlooks the square.

The flat is split over three floors and the two good sized bedrooms, both with modern ensuite's can be found on the lower grounds. Both rooms have plenty of storage and natural light.

The property spans across 1291 sq ft and benefits further from a separate WC, good storage, original period features and high ceilings.

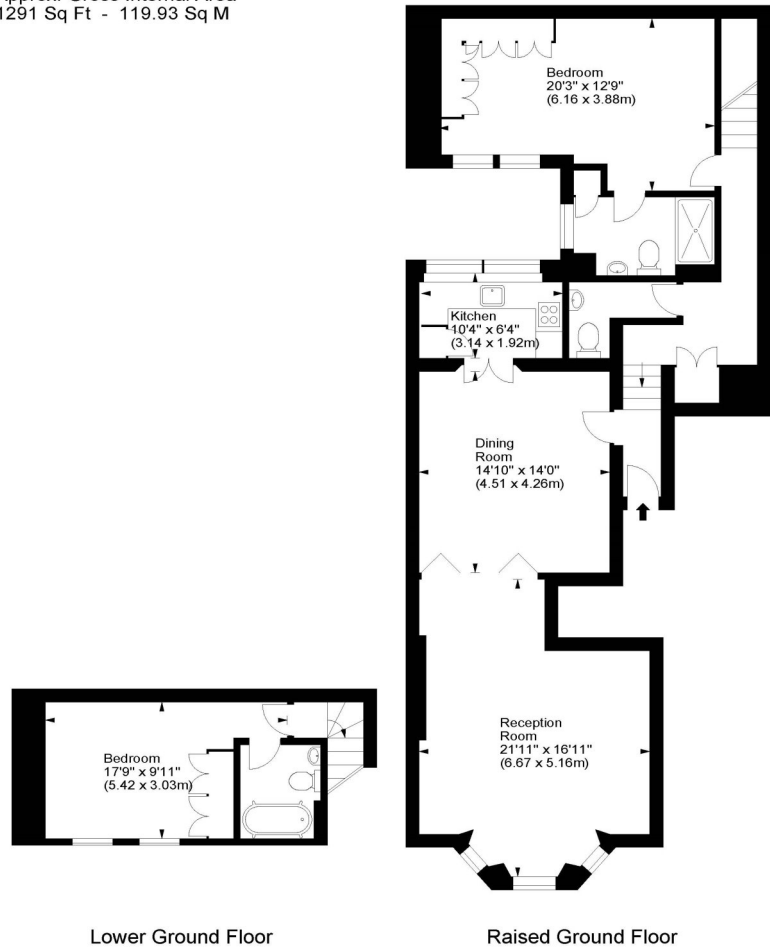
St Georges Square is located well for Pimlico Underground (Victoria Line, 0.2



winkworth wishes to inform prospective buyers and tenants that these particulars are a guide and act as information only. All our details are given in good faith and believed to be correct at the time of printing but they don't form part of an offer or contract. No Winkworth employee has authority to make or give any representation or warranty in relation to this property. All fixtures and fittings, whether fitted or not are deemed removable by the vendor unless stated otherwise and room sizes are measured between internal wall surfaces, including fireplaces.

St Georges Square, SW1

Approx. Gross Internal Area
1291 Sq Ft - 119.93 Sq M



For illustration purposes only. Not to scale.
All measurements are taken and shown at floor level.
www.r3photography.co.uk © Photography / Floor Plans / Lease Plans / EPCs



Pimlico & Westminster | 020 7828 1786 |
pimlico@winkworth.co.uk

winkworth.co.uk/pimlico

Winkworth

for every step...