



CHURCHFIELD MANSIONS, NEW KINGS ROAD, SW6 £635,000 LEASEHOLD

A well-kept and spacious two double bedroom flat in Churchfield Mansions, located in the heart of Parsons Green.

Fulham & Parsons Green | 020 7731 3388
40 New King's Road, Fulham, London, SW6 4ST

Winkworth

for every step...

winkworth.co.uk



DESCRIPTION

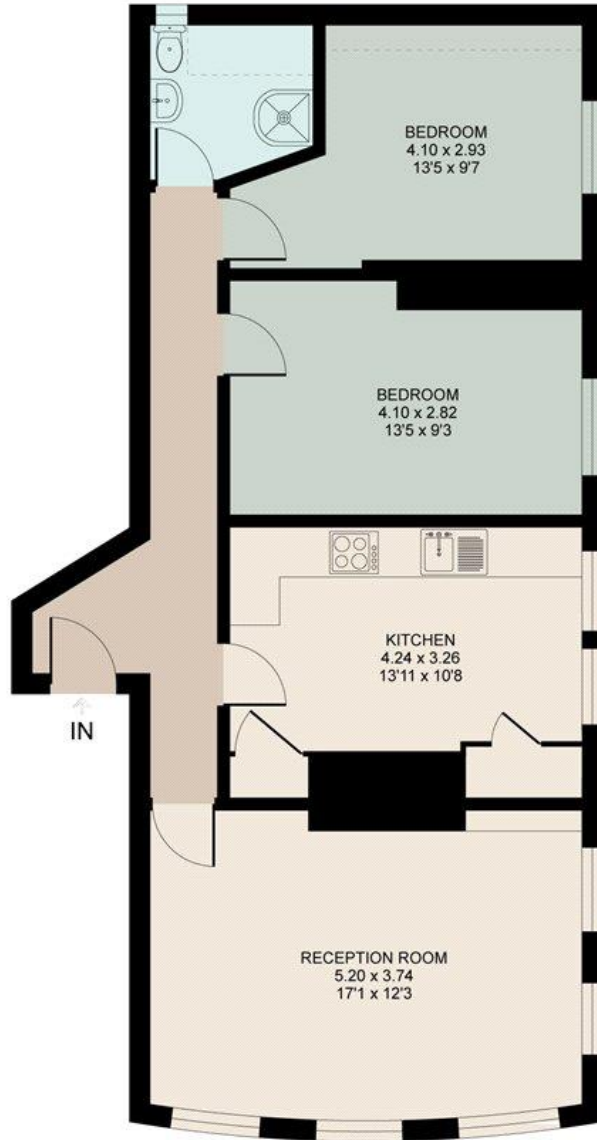
Situated on the third floor the flat covers just over 750 Sq. Ft. and has a lovely, light and bright reception room. There is a stylish, separate eat in kitchen that has a good balance of wall and base units. The two bedrooms are served by a contemporary tiled bathroom.

Churchfield Mansions is a short walk from the village centre of Parsons Green and is linked to Central and South London by the 22 bus service down New Kings Road and the district line found at Parsons Green tube. There are an array of local shops, restaurants on New Kings Road and the green expanse of Hurlingham Park is just around the corner.



Churchfield Mansions, SW64

 = Reduced headroom

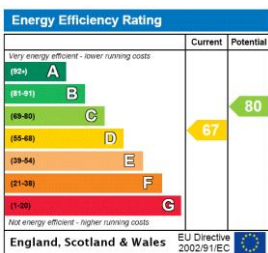


THIRD FLOOR
753 SQ.FT. (70 SQ.M.) APPROX

Approximate Gross Internal Area = 70 sq m / 753 sq ft
(excludes restricted head height)

Whilst every attempt has been made to ensure the accuracy of the floor plan contained here, measurements of doors, windows, rooms and any other items are approximate and no responsibility is taken for any error, omission or mis-statement. This plan is for illustrative purposes only and should be used as such by any prospective purchaser. The services, systems and appliances shown have not been tested and no guarantee as to their operability or efficiency can be given.

This floorplan is for illustration purposes only and is not to scale. The position and size of doors, windows, appliances and other features are approximate.



Tenure: Leasehold

Term: 92 year and 0 months

Service Charge: £1700 per annum

Ground Rent: £ 100 Annually (subject to increase)

Council Tax Band: E

Where no figures are shown, we have been unable to ascertain the information. All figures that are shown were correct at the time of printing.

Fulham & Parsons Green | 020 7731 3388 | fulham@winkworth.co.uk
40 New King's Road, Fulham, London, SW6 4ST

Winkworth

for every step...

winkworth.co.uk

Winkworth wishes to inform prospective buyers and tenants that these particulars are a guide and act as information only. All our details are given in good faith and believed to be correct at the time of printing but they don't form part of an offer or contract. No Winkworth employee has authority to make or give any representation or warranty in relation to this property. All fixtures and fittings, whether fitted or not are deemed removable by the vendor unless stated otherwise and room sizes are measured between internal wall surfaces, including furnishings.