



**BURROWS ROAD, NW10**  
**£5,750 PER MONTH**

**PRESENTING ONE OF THE BEST FOUR BEDROOM  
FAMILY HOMES WE HAVE SEEN THIS YEAR IN THIS  
LOCATION.**

**Kensal Rise & Queens Park | 0208 960 4947 | [kensalrise@winkworth.co.uk](mailto:kensalrise@winkworth.co.uk)**

**Winkworth**

**for every step...**

*[winkworth.co.uk](http://winkworth.co.uk)*





### **DESCRIPTION:**

This stunningly beautiful property has accommodation arranged over three floors measuring almost 1800 sq. ft. with four double bedrooms (one with an en-suite shower room), a large family bathroom with a beautiful roll top bath and walk in shower, a south facing double aspect reception room, ground floor W.C / utility room and the most fantastic kitchen diner that has been extended at the rear creating a wonderful family space.

The garden to the rear is accessed through bi-folding doors and there is also a working office at the back of the garden.

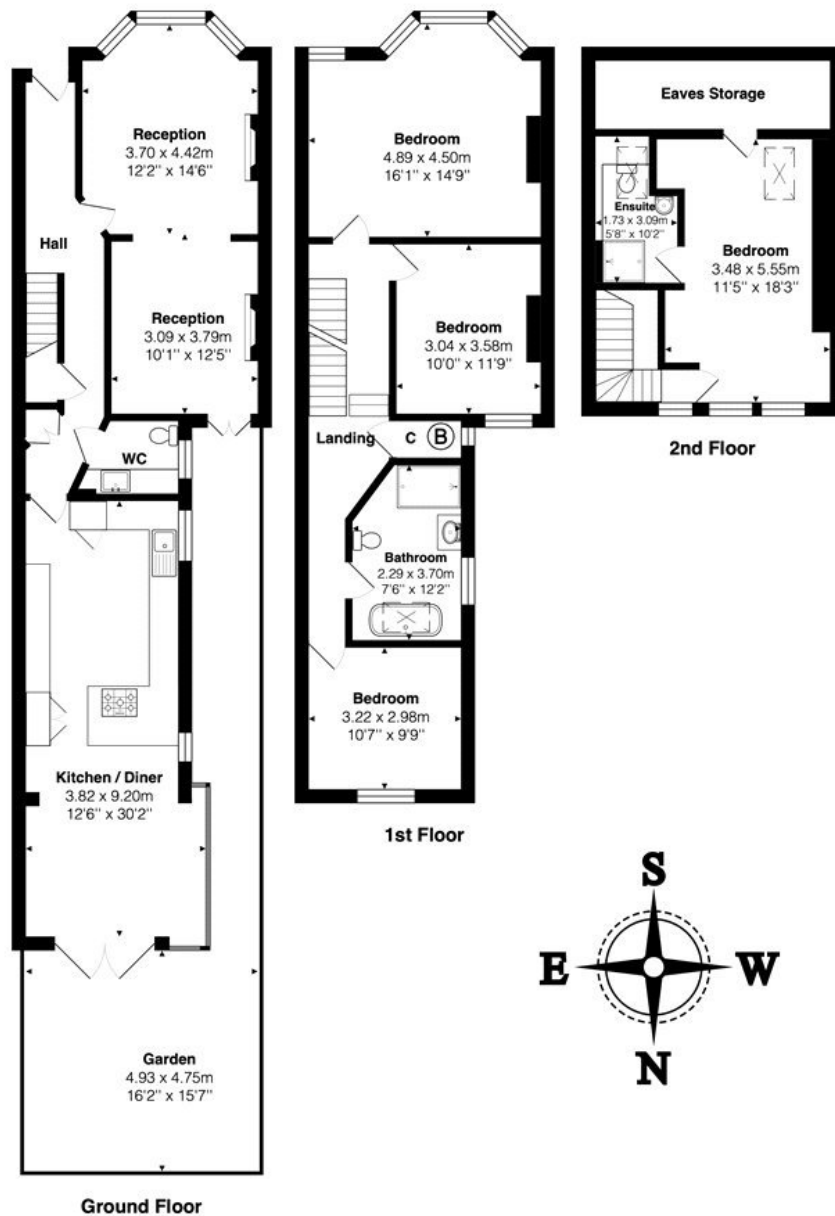
The property is in excellent condition throughout having been lovingly maintained by the current owners.

Further benefits include many original features through to include feature fireplaces, wooden flooring and a lovely entrance hall with Victorian tiles. Tenants will also love how light floods through the many skylights throughout the property.

Brent Council Tax Band - E

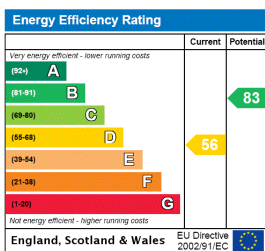






Total Area: 166.7 m<sup>2</sup> ... 1794 ft<sup>2</sup> (excluding garden, eaves storage)  
 All measurements are approximate and for display purposes only

This floorplan is for illustration purposes only and is not to scale. The position and size of doors, windows, appliances and other features are approximate.



**Deposit:** 6 weeks rent

**Holding Deposit:** 1 weeks rent

**Council Tax Band:** E

Where no figures are shown, we have been unable to ascertain the information. All figures that are shown were correct at the time of printing.



Kensal Rise & Queens Park | 0208 960 4947 | kensalrise@winkworth.co.uk

for every step...

winkworth.co.uk

Winkworth wishes to inform prospective buyers and tenants that these particulars are a guide and act as information only. All our details are given in good faith and believed to be correct at the time of printing but they don't form part of an offer or contract. No Winkworth employee has authority to make or give any representation or warranty in relation to this property. All fixtures and fittings, whether fitted or not are deemed removable by the vendor unless stated otherwise and room sizes are measured between internal wall surfaces, including furnishings.