



Winkworth
for every step...



WELSHSIDE, GOLDSMITH AVENUE, LONDON, NW9
£520,000 FREEHOLD

THREE BEDROOM END OF TERRACE FAMILY HOME

Kingsbury | 020 8204 0000 | kingsbury@winkworth.co.uk



for every step...

winkworth.co.uk



DESCRIPTION: Discover an exceptional opportunity to purchase this end of terrace residence boasting a bright and airy reception room seamlessly connected to a sleek modern kitchen. Venturing upstairs you will find three well-proportioned bedrooms, a shower room, and the convenience of a residents' parking permit. Externally, residents can embrace the charm of the lovely rear garden, offering a delightful haven for family to gather and children to play. With regards to location, this property enjoys a privileged yet tranquil setting just moments away from local bus routes. Positioned equidistantly between Kingsbury (Jubilee Line) and Colindale (Northern Line), both merely 1.5 miles away, residents benefit from easy access to an array of shops, schools, amenities, and places of worship. For those seeking an investment or a new home, an internal viewing is highly recommended to fully appreciate the allure of this residence.



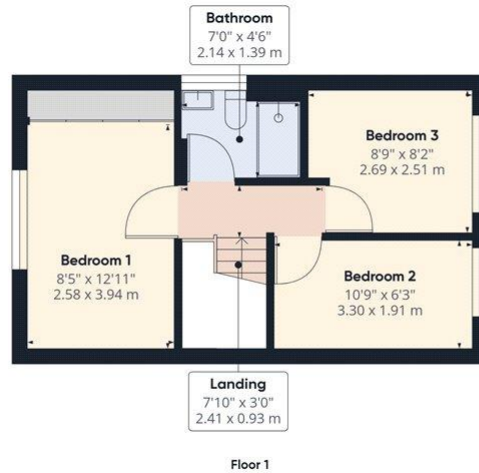
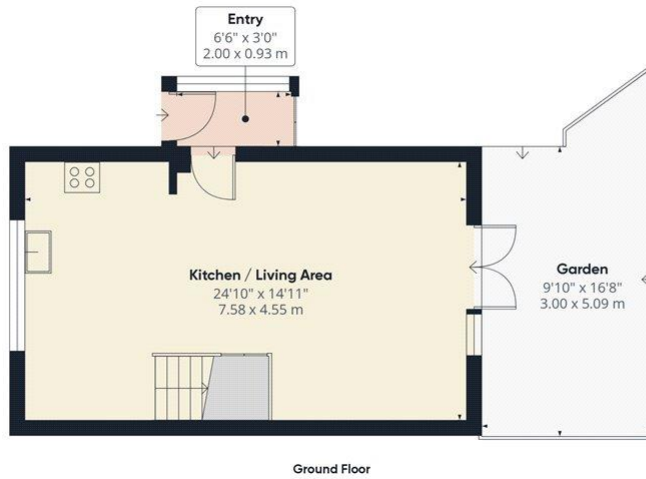
Winkworth

for every step...



Winkworth

for every step...



Approximate total area^m
 725.28 ft²
 67.38 m²

(1) Excluding balconies and terraces

While every attempt has been made to ensure accuracy, all measurements are approximate, not to scale. This floor plan is for illustrative purposes only.

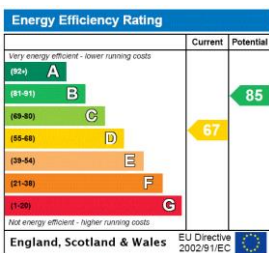
GIRAFFE 360

This floorplan is for illustration purposes only and is not to scale. The position and size of doors, windows, appliances and other features are approximate.

Tenure: Freehold

Council Tax Band: E

Where no figures are shown, we have been unable to ascertain the information. All figures that are shown were correct at the time of printing.



Kingsbury | 020 8204 0000 | kingsbury@winkworth.co.uk



for every step...

winkworth.co.uk

Winkworth wishes to inform prospective buyers and tenants that these particulars are a guide and act as information only. All our details are given in good faith and believed to be correct at the time of printing but they don't form part of an offer or contract. No Winkworth employee has authority to make or give any representation or warranty in relation to this property. All fixtures and fittings, whether fitted or not are deemed removable by the vendor unless stated otherwise and room sizes are measured between internal wall surfaces, including furnishings.