

Fraser Court, Heathstan Road, W12

£325,000 Leasehold

A smart one bedroom flat on the third floor of a modern purpose built block, with private balcony and allocated parking.

Reception Room | Kitchen | Bedroom | Bathroom | Balcony | 528 Sq Ft / 49 Sq M | Council Tax Band C | EPC Rating Band C

Winkworth



LOCATION

Fraser Court is a modern purpose built block, located on Heathstan Road. The area is convenient for the amenities of Shepherd's Bush and White City, including Westfield London and the bars and restaurants of TV Centre. The closest Underground stations are White City and East Acton (Central Line).

DESCRIPTION

Offered in extremely good order throughout, accommodation comprises entrance hall, bedroom, bathroom and semi open plan kitchen / reception room, with doors to a private balcony. The flat further benefits from an allocated off street parking space.

Lease:- 99 years from 15 December 2006 (currently being extended by an additional 90 years, to 170 years total)

Service Charge:- £1920 p.a.

Ground Rent:- Peppercorn

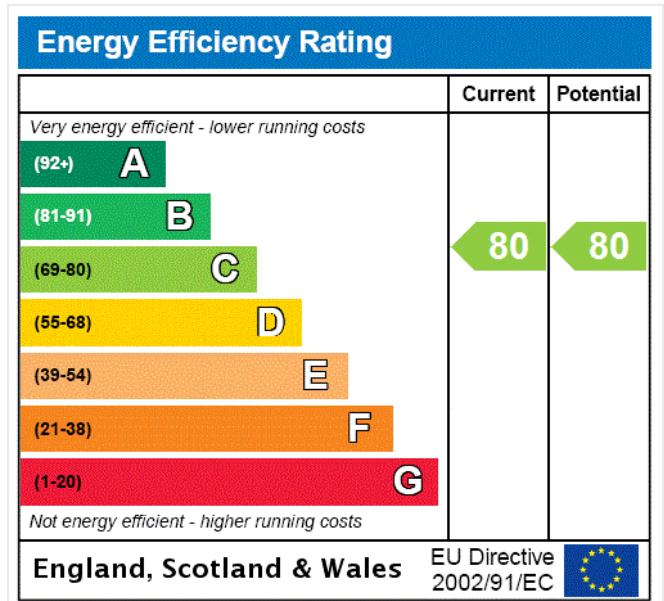


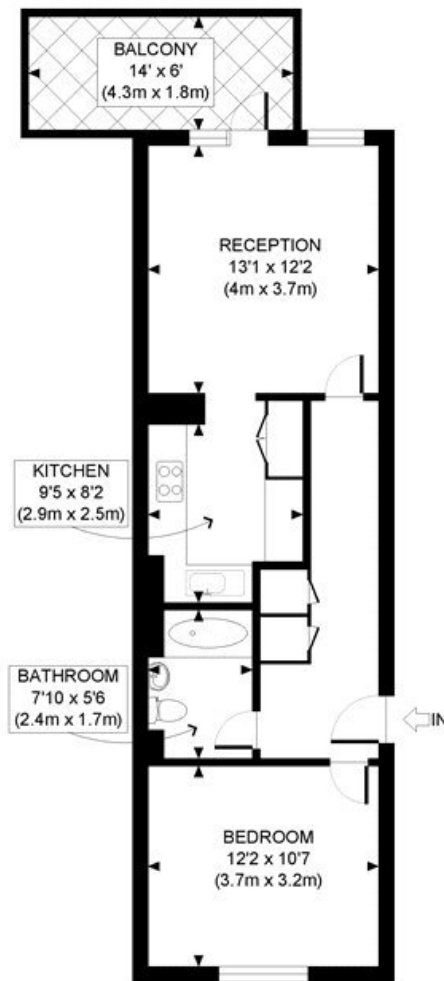


LOCAL AUTHORITY
Hammersmith & Fulham

TENURE
Leasehold 80 years 8 months.

PRICE: £325,000 Leasehold





THIRD FLOOR
GROSS INTERNAL
FLOOR AREA 528 SQ FT



APPROX. GROSS INTERNAL FLOOR AREA: 528 SQ FT/ 49 SQM

Winkworth

FRASER COURT, W12

This plan is for illustrative purposes only and should be used as such by any prospective client. Whilst every attempt has been made to ensure the accuracy of the Floor Plan contained here, measurements of the doors, windows, rooms and any other items are approximate and no responsibility is taken for any errors, omissions, or misstatement. The services, systems and appliances shown have not been tested and no guarantee as to the operability or efficiency can be given.

PROPERTY PHOTO PLANS
THE TOP END OF PROPERTY MARKETING

The displayed square footage is taken from the floor plans with measurements created using the Royal Institute of Chartered Surveyors' Code of Practice for Measuring. These measurements are approximate and included for illustrative purposes only. Winkworth does not make any representation as to the accuracy of these measurements and you should seek to verify them for yourself. Winkworth accept no liability for any loss you may suffer if you rely on these measurements.

Shepherds Bush | 020 8735 3266 | shepherdsbush@winkworth.co.uk

Winkworth

for every step...

Under the Property Misdescriptions Act 1991, these Particulars are a guide and act as information only. All details are given in good faith and are believed to be correct at time of printing. Winkworth give no representation as to their accuracy and potential purchasers or tenants must satisfy themselves by inspection or otherwise as to their correctness. No employee of Winkworth has authority to make or give any representation or warranty in relation to this property.