



OVINGTON SQUARE, LONDON, SW3
£650.00 PER WEEK

ELEGANT ONE BEDROOM PERIOD FLAT WITH GARDEN SQUARE VIEWS

Knightsbridge & Chelsea, 0207 589 6616, knightsbridge@winkworth.co.uk

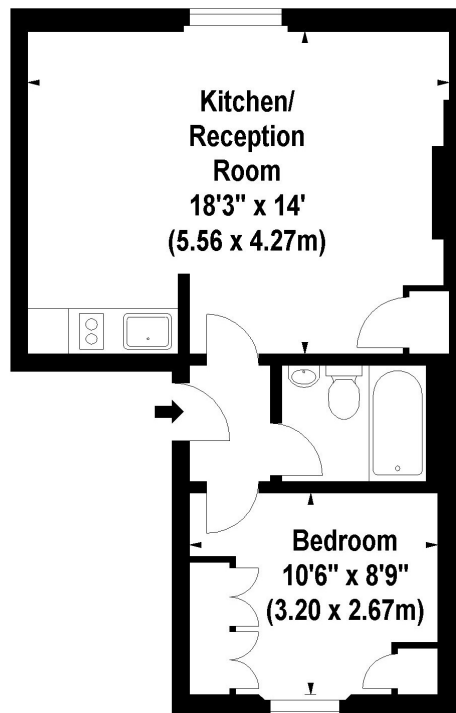
Tenant Fees Apply: Details of fees for tenant referencing, tenancy agreement admin fees and renewal fees are available on the Winkworth website and the link can be found with the displayed rent for the property. Tenants should ensure they are fully conversant with these upfront fees and other costs that are involved at the outset of the tenancy before making an offer to rent and your local Winkworth office will provide written details upon request.

DESCRIPTION:

Situated on the third floor of a charming period building, this beautifully presented one-bedroom flat offers stunning views over a picturesque garden square. Featuring a bright reception room, a modern kitchen with quality appliances, a spacious bedroom with fitted storage, and a contemporary bathroom, this home blends classic charm with modern comfort. Ideally located for excellent transport links, boutique shops, and fine dining, it presents an exceptional opportunity for refined city living.

Ovington Square, SW3

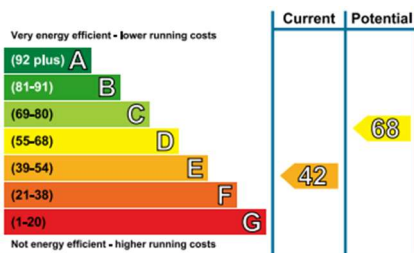
Approx. Gross Internal Area *
413 Sq Ft - 38.37 Sq M



Third Floor

Illustration For Identification Purposes Only. Not To Scale
*Floorplans Drawn According To RICS Guidelines
© www.totalvista.co.uk 2008 (br)

This floorplan is for illustration purposes only and is not to scale. The position and size of doors, windows, appliances and other features are approximate.



Deposit: £3250.00

Holding Deposit: £650.00

Council Tax Band:

Where no figures are shown, we have been unable to ascertain the information. All figures that are shown were correct at the time of printing.