



LISKEARD GARDENS, BLACKHEATH, SE3 0PL
GUIDE PRICE £325,000-£350,000 LEASEHOLD

A SUPERBLY LOCATED AND LARGER THAN USUAL, ONE BEDROOM APARTMENT FOUND ON THE GROUND FLOOR OF THIS SMALL MODERN BLOCK CLOSE TO THE HEATH AND A SHORT WALK FROM BLACKHEATH VILLAGE, SOLD CHAIN FREE AND WITH A GARAGE EN BLOC.

Blackheath | 0208 8520999 | blackheath@winkworth.co.uk

Winkworth



DESCRIPTION:

The accommodation comprises a large 23'4 reception room, a separate and spacious modern kitchen, bedroom and bathroom. The property further benefits from communal gardens to the rear, garage en-bloc and free bay parking adjacent to the development on Liskeard Gardens.

The property is ideal for first time buyers, as an investment property or pied-à-terre. There is no chain and immediate viewing is strongly advised.

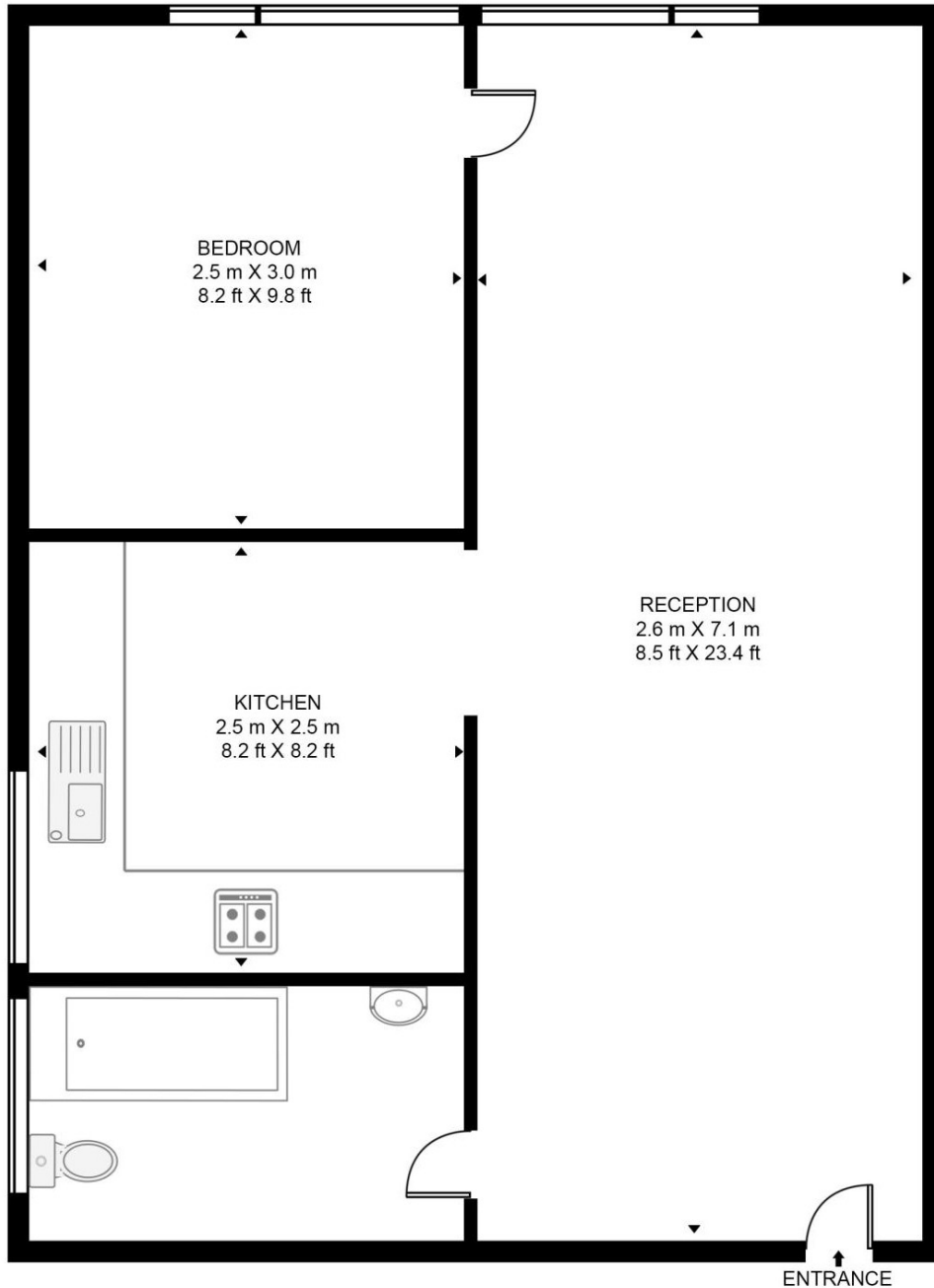
Oakcroft Court is located on Liskeard Gardens, an outstanding quiet road located just off to the heath and is very convenient for transport links with Blackheath Station, 0.5 miles, Greenwich and North Greenwich, 1.9 miles. Blackheath Common, (0.3 miles), and Greenwich Park, (0.5miles), are both just a short walk and Blackheath Village with its array of restaurants, bars and boutique shops is only 0.6 miles.

AT A GLANCE

- apartment
- one bedroom
- ground floor
- spacious
- separate kitchen
- chain free
- close to heath







APPROXIMATE GROSS INTERNAL FLOOR AREA 554 SQ.FT (51.5 SQ.M)

GROUND FLOOR

This floorplan is for illustration purposes only and is not to scale. The position and size of doors, windows, appliances and other features are approximate. Any lease and service charge details have been provided by the vendor. Any interest party should have these checked by a solicitor as part of the purchase process.

