



LORD CHANCELLOR WALK, KT2
SHORT LET £6,000 PER MONTH PART FURNISHED

Winkworth



LORD CHANCELLOR WALK, KT2

SHORT LET Well appointed 4 Bedroom Detached House located in the highly desirable Coombe Estate of Kingston Hill. Some of the UK's leading schools are located nearby including Holy Cross Preparatory School, Marymount International School, Rokeby School, Coombe Junior School, The Cottage, Coombe Hill School and the Regan School of Music.

Situated 1.4 mile to the picturesque woodlands and meadows of Richmond Park, the property offers spacious accommodation and provides a serene setting for leisurely afternoon walks around the neighbourhood. Available immediately.

The property is let on a part-furnished basis.

Holding Fee: £1,384.61 (1 weeks rent) Security deposit £8,307.69 (6 weeks rent) based on marketing rent of £6,000 per calendar month. If a higher rent is agreed, then the deposit will be increased proportionately.

EPC Rated D

Council Tax Band H



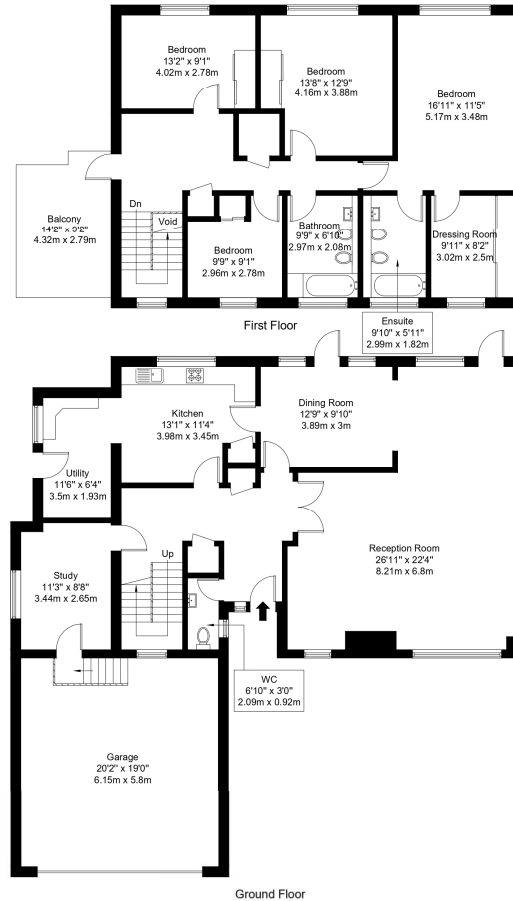
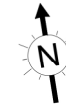


Lord Chancellor Walk, KT2 7HG

Approx Gross Internal Area = 250.1 sq m / 2692 sq ft

Balcony = 11.4 sq m / 123 sq ft

Total = 261.5 sq m / 2815 sq ft



Ref :

Copyright **BLEU PLAN**

The Floor plan is not to scale and measurements and areas shown are approximate and therefore should be used for illustrative purposes only. The plan has been prepared in accordance with the RICS code of Measuring Practice and whilst we have confidence in the information produced it must not be relied on. Maximum lengths and widths are represented on the floor plan. If there is any aspect of particular importance, you should carry out or commission your own inspection of the property.
Copyright @ BleuPlan

Energy Efficiency Rating		Current	Potential
Very energy efficient - lower running costs			
(92-)	A		
(81-91)	B		
(69-80)	C		
(55-68)	D	65	80
(39-54)	E		
(21-38)	F		
(1-20)	G		
Not energy efficient - higher running costs			
England, Scotland & Wales		EU Directive 2002/91/EC	

Wimbledon | 02037614040 | wimbledon@winkworth.co.uk

winkworth.co.uk

Winkworth wishes to inform prospective buyers and tenants that these particulars are a guide and act as information only. All our details are given in good faith and believed to be correct at the time of printing but they don't form part of an offer or contract. No Winkworth employee has authority to make or give any representation or warranty in relation to this property. All fixtures and fittings, whether fitted or not are deemed removable by the vendor unless stated otherwise and room sizes are measured between internal wall surfaces, including furnishings.

