



OVINGTON SQUARE, LONDON, SW3
£1,350,000 LEASEHOLD

DESCRIPTION:

A bright and well-presented two bedroom apartment on the first floor (with lift) of a purpose-built Knightsbridge block.

The flat accommodation comprises: an entrance hallway with built-in storage and laminate wood flooring, a well-equipped kitchen with integrated appliances and views over the communal gardens, a separate guest WC with shower, two double bedrooms, one with an en-suite bathroom, and a large drawing room with dining area and a covered balcony overlooking the communal garden.

Knightsbridge & Chelsea | 0207 589 6616 | knightsbridge@winkworth.co.uk

Winkworth

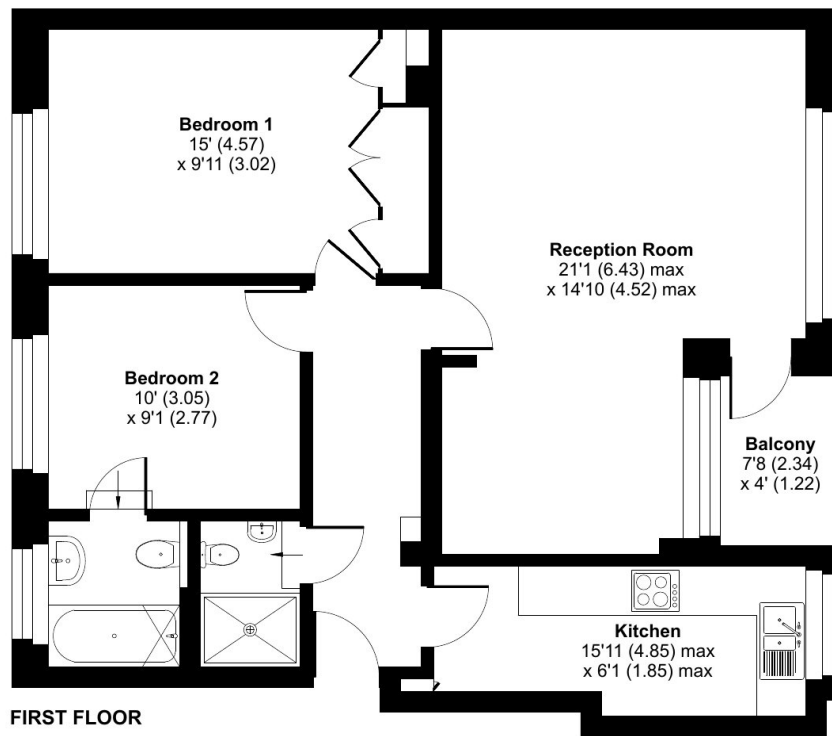
for every step...

winkworth.co.uk

Ovington Square, London, SW3

Approximate Area = 778 sq ft / 72.3 sq m

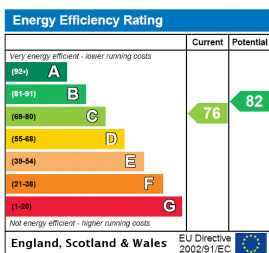
For identification only - Not to scale



Floor plan produced in accordance with RICS Property Measurement Standards incorporating International Property Measurement Standards (IPMS2 Residential). © nichecom 2022. Produced for Movewise. REF: 923545



This floorplan is for illustration purposes only and is not to scale. The position and size of doors, windows, appliances and other features are approximate.



Tenure: Leasehold

Term: 122 year and 3 months

Service Charge: £6,400 per annum

Ground Rent: Peppercorn

Council Tax Band: G

Where no figures are shown, we have been unable to ascertain the information. All figures that are shown were correct at the time of printing.

Knightsbridge & Chelsea | 0207 589 6616 | knightsbridge@winkworth.co.uk

Winkworth

for every step...

winkworth.co.uk

Winkworth wishes to inform prospective buyers and tenants that these particulars are a guide and act as information only. All our details are given in good faith and believed to be correct at the time of printing but they don't form part of an offer or contract. No Winkworth employee has authority to make or give any representation or warranty in relation to this property. All fixtures and fittings, whether fitted or not are deemed removable by the vendor unless stated otherwise and room sizes are measured between internal wall surfaces, including furnishings.