



**KINGS REACH, READING, BERKSHIRE, RG1 3FF
£1,350 PER MONTH FURNISHED**

**MODERN ONE BEDROOM APARTMENT IN
READING TOWN CENTRE. AVAILABLE 20TH
AUGUST.**

Reading | 0118 4022 300 | reading@winkworth.co.uk

Winkworth

for every step...

winkworth.co.uk

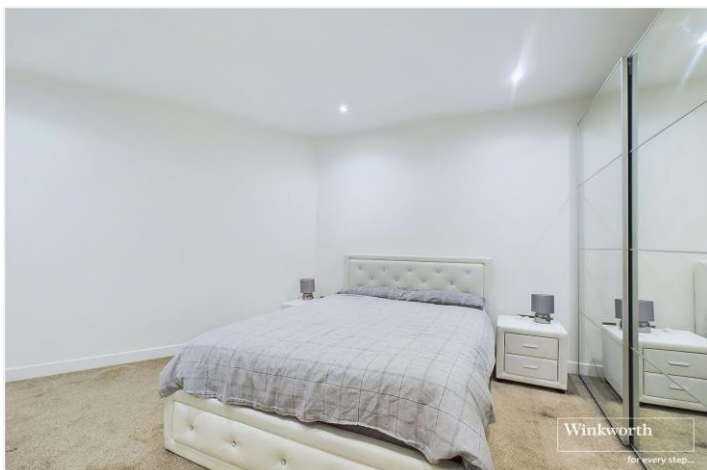


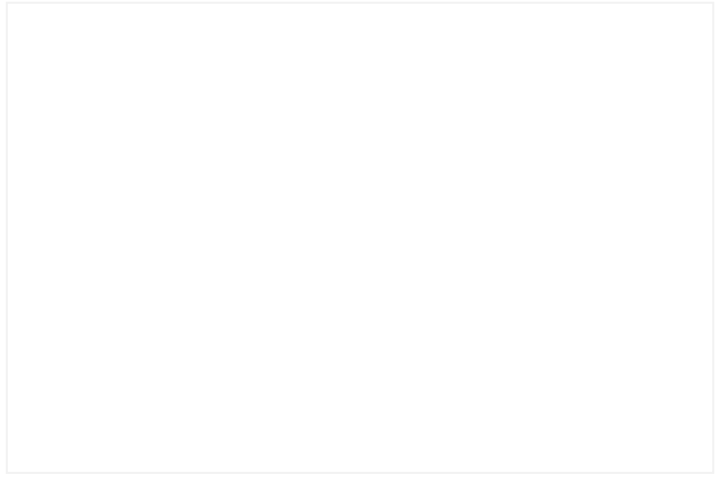
DESCRIPTION:

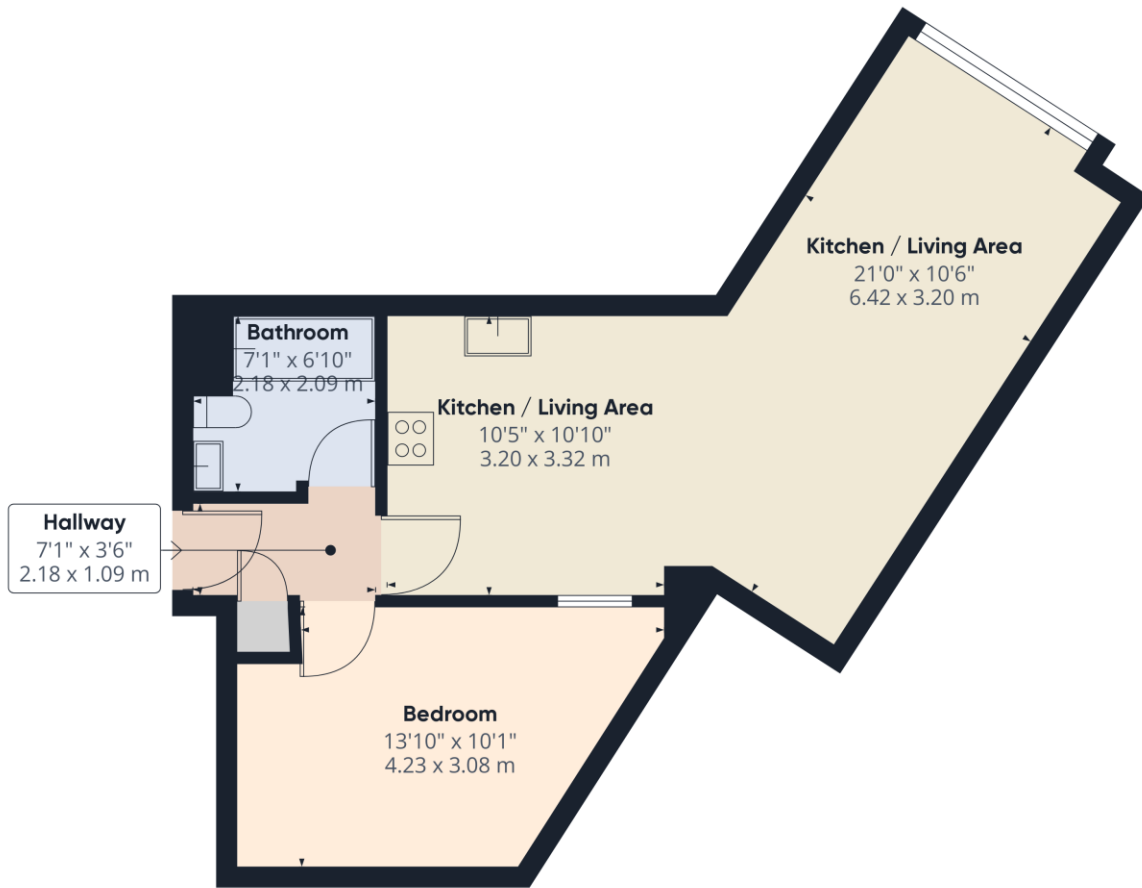
Modern one bedroom apartment located on the second floor of the Kings Reach development in Reading town centre, a short walk from Reading train station. The property comprises a living room with open plan kitchen benefitting from integrated appliances, one double bedroom and a modern three piece bathroom. Available 20th August 2024. Furnished.

AT A GLANCE

- Modern one bedroom apartment
- Town centre location
- Second floor with lift access
- No parking
- Council tax band B
- Available 20th August
- Furnished







Approximate total area⁽¹⁾
 543.84 ft²
 50.52 m²

(1) Excluding balconies and terraces

While every attempt has been made to ensure accuracy, all measurements are approximate, not to scale. This floor plan is for illustrative purposes only.

GIRAFFE360

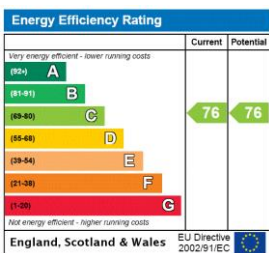
This floorplan is for illustration purposes only and is not to scale. The position and size of doors, windows, appliances and other features are approximate.

Deposit: £1,557.69

Holding Deposit: £311.53

Council Tax Band: B

Where no figures are shown, we have been unable to ascertain the information. All figures that are shown were correct at the time of printing.



Reading | 0118 4022 300 | reading@winkworth.co.uk



for every step...

winkworth.co.uk

Winkworth wishes to inform prospective buyers and tenants that these particulars are a guide and act as information only. All our details are given in good faith and believed to be correct at the time of printing but they don't form part of an offer or contract. No Winkworth employee has authority to make or give any representation or warranty in relation to this property. All fixtures and fittings, whether fitted or not are deemed removable by the vendor unless stated otherwise and room sizes are measured between internal wall surfaces, including furnishings.