



MOWBRAY ROAD, CRYSTAL PALACE, LONDON, SE19  
**£1,700 PER MONTH UNFURNISHED**

**A FANTASTIC TWO BEDROOM SECOND FLOOR  
FLAT, A SHORT DISTANCE AWAY FROM CRYSTAL  
PALACE TRIANGLE.**

Crystal Palace | 02038693222 | [crystalpalace@winkworth.co.uk](mailto:crystalpalace@winkworth.co.uk)

**Winkworth**

for every step...

[winkworth.co.uk](http://winkworth.co.uk)



## DESCRIPTION:

Winkworth is pleased to offer this modern two-bedroom flat for rent on a quiet, residential road in Crystal Palace.

The property is located in a well-maintained purpose-built development on the second floor and comprises entrance hallway with in-built storage, double bedroom with bay window, second, single bedroom and open plan kitchen and reception room with space to dine.

The property benefits from an allocated street parking space for one car, is offered unfurnished & available end of October.

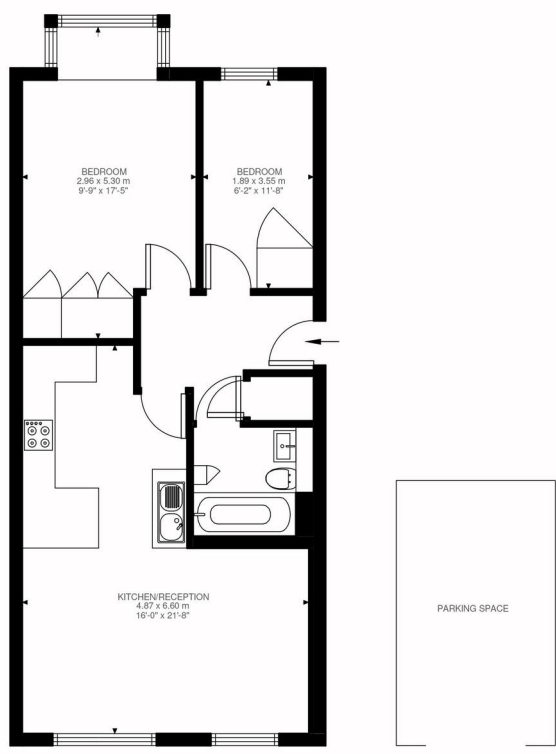
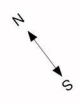
Mowbray Road is an incredibly pretty, tree lined street, and situated between Auckland Road and Maberley Road. Crystal Palace's 'triangle' is only a short walk away with its array of bars, pubs, restaurants, and gyms. South Norwood Lakes and Crystal Palace Park are both situated within access by foot, as is Crystal Palace train station.

## AT A GLANCE

- Two bedrooms
- Second floor
- Purpose built
- Off street parking for one car
- Close to local amenities and transport links
- Unfurnished
- Available end of October
- Council tax band B





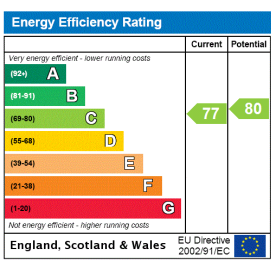


Second Floor  
615 ft<sup>2</sup>

Mowbray Road, SE19  
Approximate Gross Internal Area  
57.10 SQ.M / 615 SQ.FT

Illustration for identification purposes only. Not to scale.  
Floor Plan Drawn According To RICS Guidelines.

This floorplan is for illustration purposes only and is not to scale. The position and size of doors, windows, appliances and other features are approximate.



**Deposit: £0.00**

**Holding Deposit:**

**Council Tax Band: B**

Where no figures are shown, we have been unable to ascertain the information. All figures that are shown were correct at the time of printing.



for every step...

Crystal Palace | 02038693222 | crystalpalace@winkworth.co.uk

winkworth.co.uk

Winkworth wishes to inform prospective buyers and tenants that these particulars are a guide and act as information only. All our details are given in good faith and believed to be correct at the time of printing but they don't form part of an offer or contract. No Winkworth employee has authority to make or give any representation or warranty in relation to this property. All fixtures and fittings, whether fitted or not are deemed removable by the vendor unless stated otherwise and room sizes are measured between internal wall surfaces, including furnishings.