



221 LOWER WAY

THATCHAM BERKSHIRE RG19 3TP

A stunning four bedroom home situated close to both Newbury and Thatcham centre offering an open plan kitchen diner, large driveway and generous garden.

As you enter the home, you're greeted with a bright and airy entrance hall. The living room features a beautiful bay window and feature fireplace, surrounded by exposed brickwork. The open plan kitchen/dining room is the perfect space for hosting. The modern kitchen offers plenty of worktop and cabinet space. There are two sets of French doors leading onto the rear garden. Downstairs also benefits from a cloakroom and a storage cupboard.

To the first floor are four great sized bedrooms. The master bedroom benefits from a large mirrored fitted wardrobe as well as a bay window. Bedroom three also has airing cupboard with built in storage. The family bathroom consists of a shower over the bath, heated towel rail and neutral tiling.

To the front of the property is a large block driveway with space for multiple vehicles. There is a small, low maintenance front garden. To the rear is a great sized two tiered garden. The first tier is paved and offers a great space for alfresco dining. The second tier is laid to lawn and houses the outdoor office.



Winkworth

AT A GLANCE

- 1386ft² / 128m²
- Living Room with Fire Place
- Open Plan Kitchen Diner
- Cloakroom
- Four Generous Bedrooms
- Family Bathroom
- Generous Rear Garden
- Driveway for Multiple Vehicles

UTILITIES

The property is connected to all mains and operates on gas central heating. There are no known mobile coverage issues and there is Ultrafast broadband available in the area.

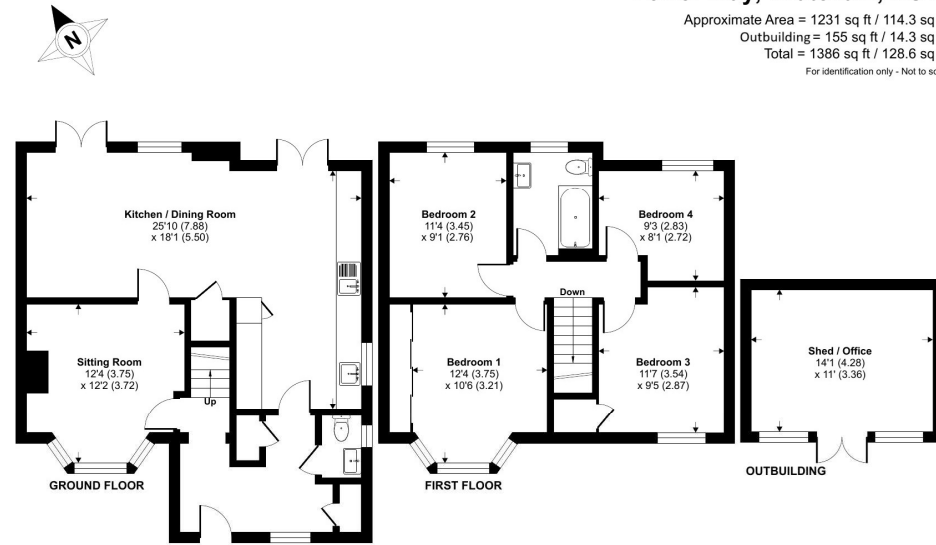
EPC - D
West Berkshire Council Tax Band - D

DIRECTIONS

What3words:///crush.vibrates.basin

Lower Way, Thatcham, RG19

Approximate Area = 1231 sq ft / 114.3 sq m
Outbuilding = 155 sq ft / 14.3 sq m
Total = 1386 sq ft / 128.6 sq m
For identification only - Not to scale



Floor plan produced in accordance with RICS Property Measurement 2nd Edition, Incorporating International Property Measurement Standards (IPMS2 Residential). © nlichecom 2025. Produced for Winkworth. REF: 1239709

Winkworth



Newbury Office

43 Northbrook Street, Newbury, Berkshire RG14 1DT
01635 552552 | newbury@winkworth.co.uk

winkworth.co.uk/newbury

Winkworth

See things differently.